

## **Meeting Presentation**

### **I-10 and I-15 Joint Sub-Committee**

February 9, 2017

10:15 AM

(Immediately Following Metro Valley Study Session)

Location: San Bernardino County Transportation Authority  
1170 W. 3<sup>rd</sup> Street, 1<sup>st</sup> Floor Lobby  
San Bernardino, CA 92410

*The meeting presentation is attached.*

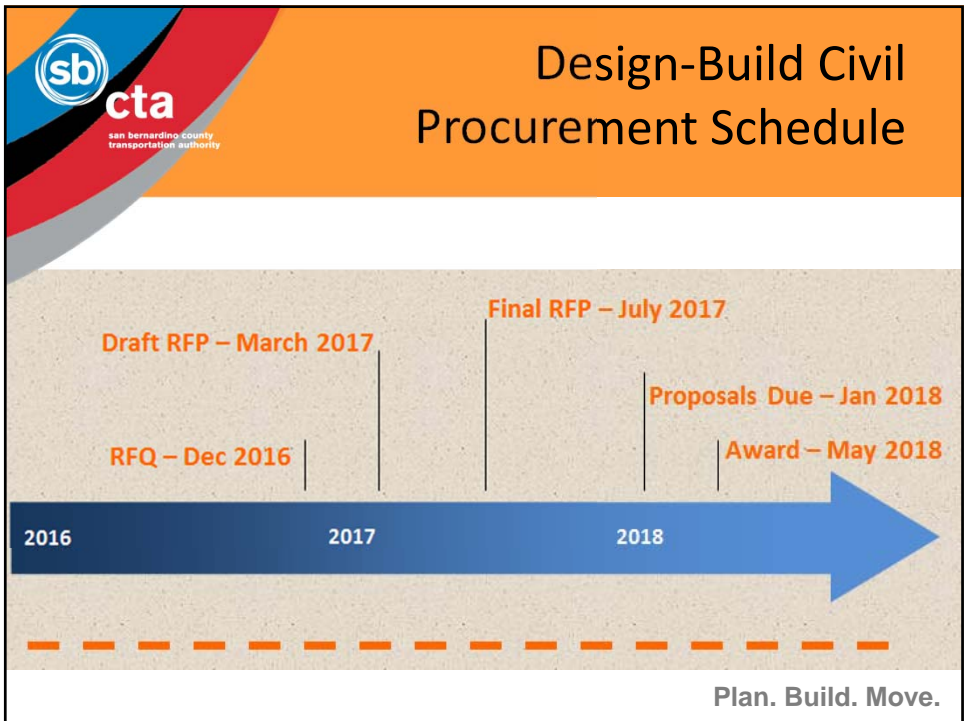


**I-10 AND I-15 JOINT  
SUB-COMMITTEE  
FEBRUARY 9, 2017**

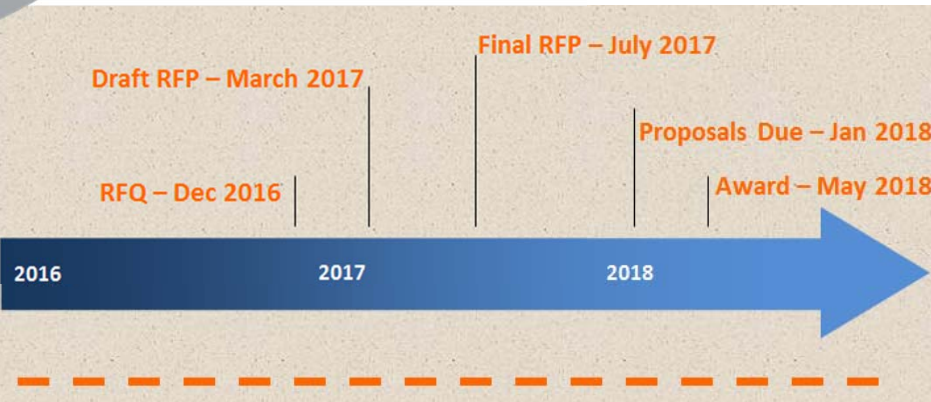


san bernardino county  
transportation authority

Plan. Build. Move.



**Design-Build Civil  
Procurement Schedule**

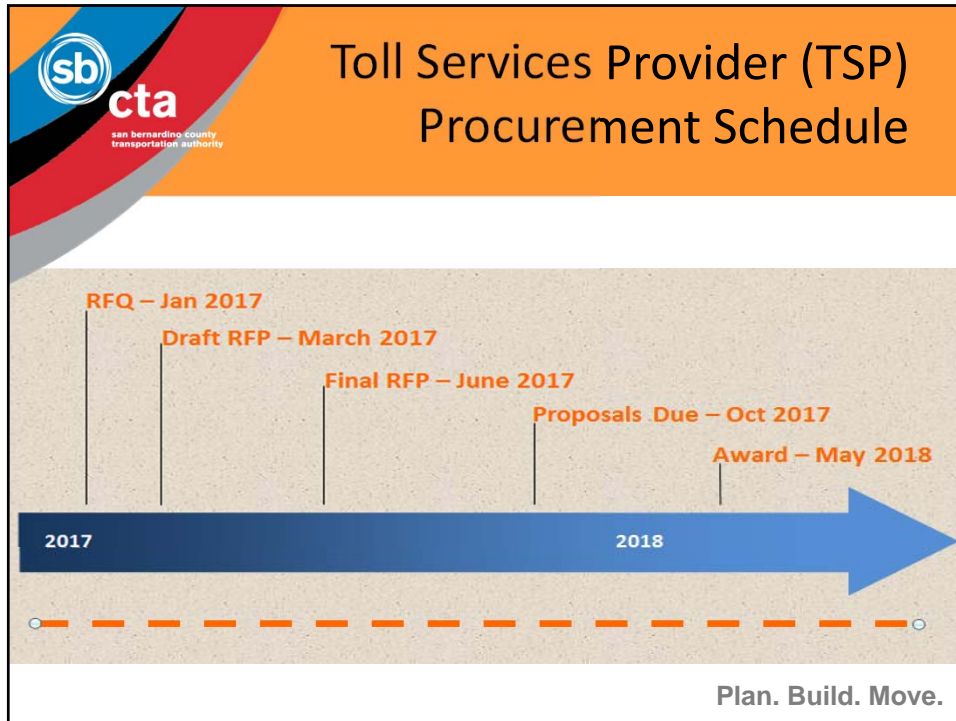


The schedule is presented on a timeline from 2016 to 2018. Key milestones are marked with vertical lines and text:


- RFQ – Dec 2016
- Draft RFP – March 2017
- Final RFP – July 2017
- Proposals Due – Jan 2018
- Award – May 2018

2016 2017 2018

Plan. Build. Move.




- 
- The slide is titled "RCTC and LA Metro Coordination" and features the sb cta logo in the top left corner. It contains a bulleted list of coordination activities:
- RCTC
    - 91 Express Lanes – Opening Spring 2017
    - I-15 Express Lanes – Financial close Summer 2017
  - LA Metro
    - Express Lanes Strategic Plan
      - Presented to Board on 1/18/17
      - Authorized CEO to initiate planning studies for Tier 1
    - Beginning work on cooperative agreement
- The text "Plan. Build. Move." is located at the bottom right of the slide.

 **TCA Agreement**


### Background

- I-10/15 Committee Meeting – 6/9/2016
  - Directed staff to negotiate and develop an agreement for shared BOS/CSC services with TCA
- I-10/15 Committee Meeting – 11/10/2016
  - Directed staff to finalize agreement for shared BOS/CSC services with TCA, and proceed directly to Board meeting for approval

Plan. Build. Move.

 **TCA Agreement**

### Toll Lane Collection System - SBCTA




↓



Toll Back Office System and Customer Service Center Operations (BOS/CSC) - TCA

Plan. Build. Move.



# TCA Agreement

## Responsibilities

- San Bernardino County Transportation Authority
  - Sets toll rates and violation penalty amounts
  - Manages the express lanes, roadway tolling system and network communications
  - Performs license plate image reviews
  - Provides completed toll transactions
  - Jurisdictional authority for violation issuance
  - Civil judgments, tax refund intercepts, 3rd party collections
- Transportation Corridor Agencies
  - Toll transaction processing (accounts, OTT, violations)
  - Customer service through TCA account management
  - TCA business rules and procedures
  - Financial reconciliation
  - Management and administration support

**Plan. Build. Move.**




# TCA Agreement

## Cost

- Per Trip Transaction Costs
- Violation Processing Costs
- Other Reimbursable Costs, not covered in the per transaction or violation processing costs, such as switchable transponders, marketing material, etc.

**Plan. Build. Move.**




## TCA Agreement

### Cost Components

- Customer service staffing – Projected 24 FTEs
  - Software licenses, equipment, supplies
- Operating Expenses
  - Credit card/banking fees
  - Postage, printing/collateral
  - 3rd party services (DMV lookup, person locator)
- Overhead costs
  - Facility/space
  - Management staff (operations, finance, marketing)
  - Insurance

**Plan. Build. Move.**



## TCA Agreement

### Cost Model

- Transaction Processing Costs (FY17)
  - Fee determination of \$0.17 per transaction
  - Estimated \$2.1M based on FY17 budget
- Violation Processing Costs (FY17)
  - Fee determination of \$1.40 per violation
- Other Reimbursable Costs
  - Start-up, marketing, 3rd party retail, Cash Payment Network, transponder inventory, etc.
  - Costs developed and approved prior to expenditure

**Plan. Build. Move.**



# TCA Agreement

## Benefits to Partnership

- Partnering with a world class toll operator when opening the I-10 Express Lanes
- Leveraging existing ExpressAccount and One-Time Toll account structure
- Reduced operating costs



Plan. Build. Move.