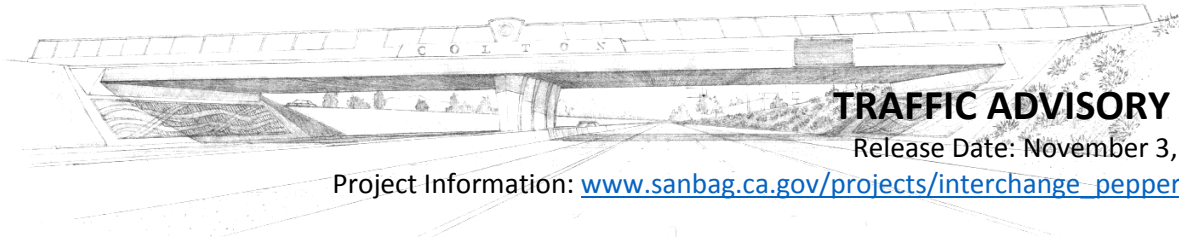


INTERSTATE 10 / PEPPER AVENUE INTERCHANGE PROJECT



TRAFFIC ADVISORY #11

Release Date: November 3, 2016

Project Information: www.sanbag.ca.gov/projects/interchange_pepper.html

I-10/PEPPER AVENUE ROADWAY AND RAMPS FULL CLOSURES

The San Bernardino Associated Governments, in partnership with the City of Colton, County of San Bernardino and Caltrans is constructing a new Interstate 10 Pepper Avenue Interchange that will feature a five-lane bridge and improved ramps. Once completed, the wider bridge will provide better traffic circulation for area residents, businesses and visitors to and from the Arrowhead Regional Medical Center. Construction began in April 2016 and is expected to continue through summer 2017.




Please refer to the information below for construction activity details:




DATE/TIME	LOCATION OF ACTIVITY	ACTIVITY/DETOUR
Sat., Nov. 5 at 4 pm to Mon., Nov. 7 at 4 am	Westbound I-10 off-ramp and on-ramp	REMINDER: Full closures of westbound I-10 Pepper Avenue off-ramp and on-ramp. As an alternate route, westbound I-10 motorists can use the Rancho Avenue off-ramp, travel north at the end of the ramp, west on Valley Boulevard to connect with northbound Pepper Avenue. To access the westbound I-10 on-ramp, motorists will be directed west on Valley Boulevard, south on Riverside Avenue. Please see detour map 1 below.
Sat., Nov. 5 2016 at 4 pm to Mon., Nov. 7 at 4 am	Pepper Avenue north of eastbound ramps to Valley Boulevard	REMINDER: A full closure of Pepper Avenue from just north of eastbound ramps to Valley Boulevard. The eastbound I-10 Pepper Avenue off-ramp will remain open. However, motorists will only be allowed to travel south on Pepper Avenue. To connect with northbound Pepper Avenue, motorists will be directed to the Riverside Avenue off-ramp, north on Riverside Avenue and east on Valley Boulevard. To access the eastbound I-10 on-ramp, motorists will be directed east on Valley Boulevard, then south on Rancho Avenue. Please see detour map 1 below.
Sun., Nov. 6, 2016 10 pm – 4 am	Westbound and Eastbound I-10	Westbound and eastbound Interstate 10 nighttime lane closures at Pepper Avenue. No detour will be required since at least one lane will remain open during this closure.
Mon., Nov. 7 – Thurs., Nov. 10, 2016 10 pm – 4 am, nightly *Sun., Nov. 13 and Mon., Nov. 14, 2016 10 pm – 4 am, nightly *Tentative	Westbound and Eastbound I-10 at Pepper Avenue	Full nighttime closures of westbound and eastbound I-10 at Pepper Avenue are required for bridge demolition work. Motorists will be directed to the Pepper Avenue off-ramps and across the Pepper Avenue bridge to reconnect to I-10. The traffic signals at the end of each ramp will be inactive to facilitate traffic flow. Please see detour map 2 below. Construction crews will provide flagging for emergency vehicles needing access to the Arrowhead Regional Medical Center or other emergency-related destinations from the eastbound I-10 off-ramp to northbound Pepper Avenue. All other motorists will be directed to the next ramp.

NOTE: Information contained in this notice is subject to change without notice, based on weather, field conditions or other operational factors.

Motorists are reminded to... **SLOW FOR THE CONE ZONE** and **MOVE OVER** a lane when it is safe to do so.

STAY CONNECTED

-  facebook.com/SANBAGnews
-  @SANBAGnews
-  SANBAGnewsroom.wordpress.com

-  info@SANBAG.ca.gov
-  SANBAG.ca.gov/projects
-  909.884.8276

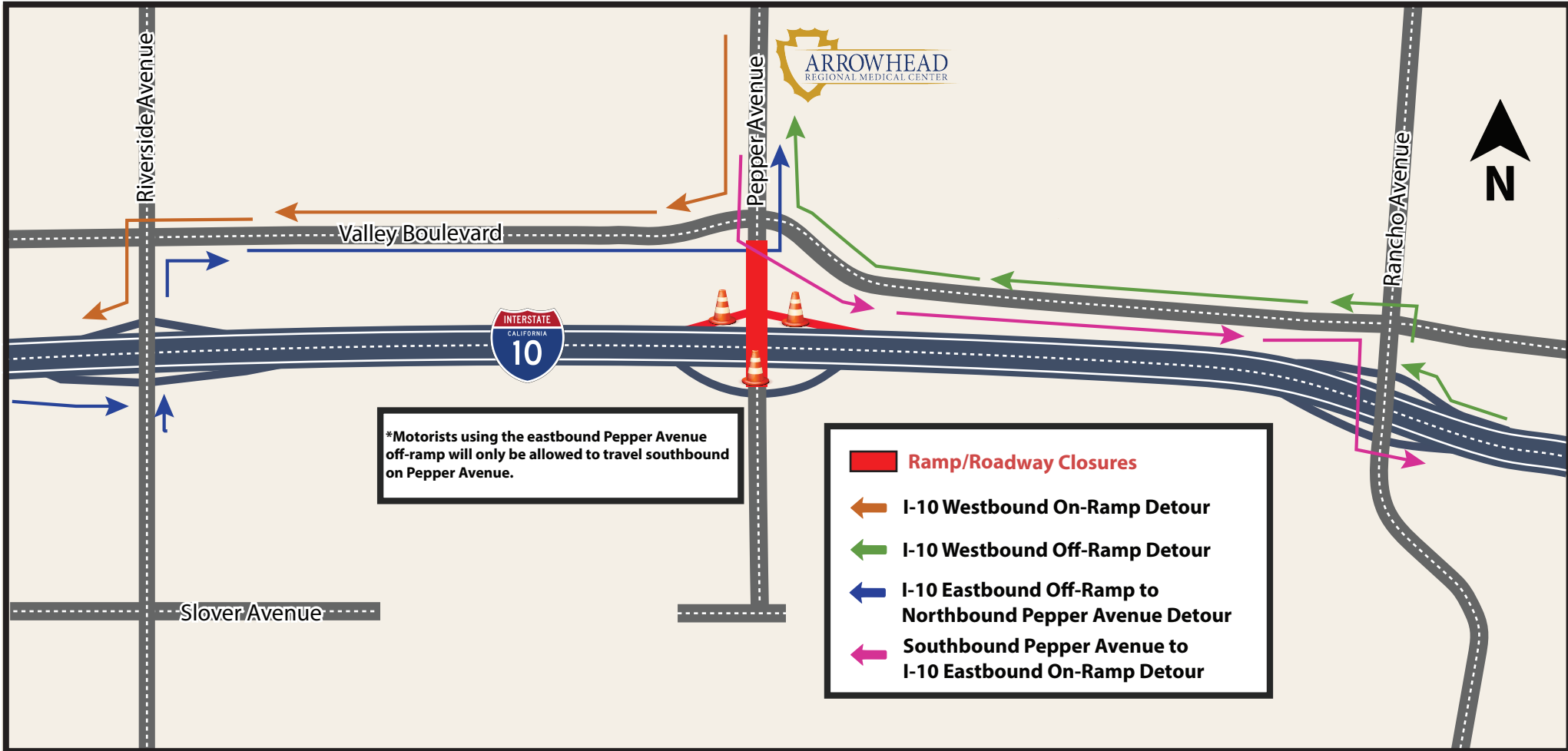
PROJECT PARTNERS



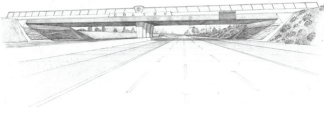


INTERSTATE 10 / PEPPER AVENUE INTERCHANGE PROJECT

COLTON, CA

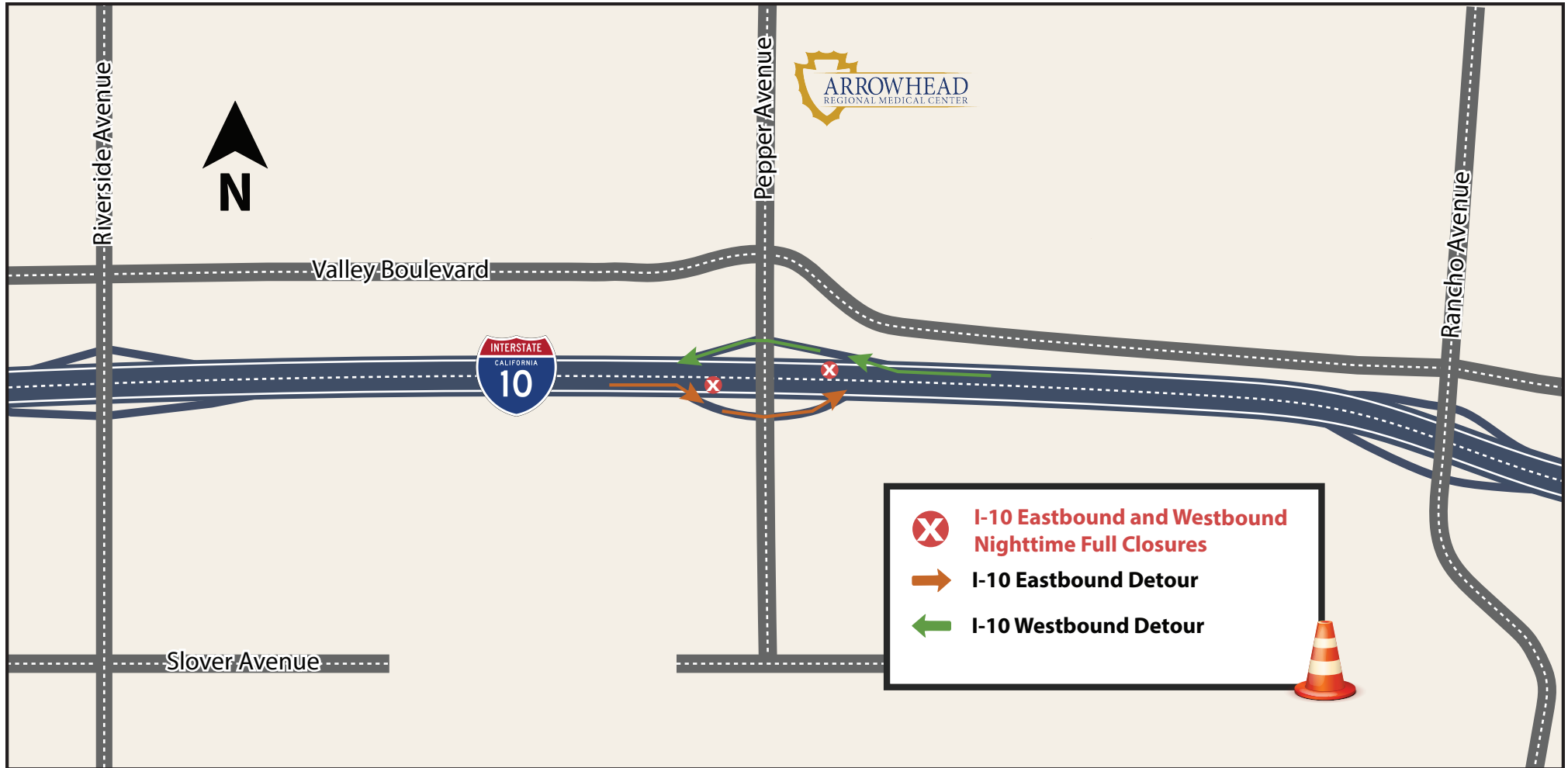


DETOUR MAP 1: *I-10/Pepper Avenue Westbound On- and Off-Ramps & Pepper Avenue Closures Between Eastbound On- and Off-Ramps and Valley Boulevard*



INTERSTATE 10 / PEPPER AVENUE INTERCHANGE PROJECT

COLTON, CA



DETOUR MAP 2: *I-10 Nighttime Full Closures at Pepper Avenue*