

DRAFT RELOCATION IMPACT STATEMENT

Interstate 10 Corridor Project

San Bernardino and Los Angeles Counties

07-LA-10 PM 44.9/48.3
08-SBD-10 PM 0.0/R37.0

EA 0C2500
EFIS ID 0800000040



September 2015



STATE OF CALIFORNIA
Department of Transportation

This page intentionally left blank.

Table of Contents

Acronyms and Abbreviations	iii
1. Overview	1
2. Project Location	1
3. Project Purpose	2
4. Need for the Project	3
5. Project Alternatives	3
5.1 Alternative 1: No Build Alternative.....	3
5.2 Alternative 2: One HOV Lane in Each Direction	3
5.3 Alternative 3: Two Express Lanes in Each Direction.....	3
6. Exhibit 10-EX-3A.....	4
7. References	4

List of Figures

Figure 1: Project Vicinity Map	5
Figure 2: Project Location Map and Study Area	7

List of Appendices

Appendix A	Exhibit 10-EX-3A
Appendix B	Relocation Impact Statement Mapbook for Alternative 3
Appendix C	Available Relocation Properties

This page intentionally left blank.

Acronyms and Abbreviations

Caltrans	California Department of Transportation
DRIS	Draft Relocation Impact Statement
EIR	Environmental Impact Report
EIS	Environmental Impact Statement
GP	general purpose
HOV	high-occupancy vehicle
I-10	Interstate 10
LA/SB	Los Angeles/San Bernardino
PM	Post Mile
ROW	Right-of-Way
SANBAG	San Bernardino Associated Governments
SBB&M	San Bernardino Baseline and Meridian
SCAG	Southern California Association of Governments
SR	State Route
USGS	United States Geological Survey
v/c	volume to capacity

This page intentionally left blank.

1. Overview

The California Department of Transportation (Caltrans), in cooperation with the San Bernardino Associated Governments (SANBAG), proposes to add freeway lanes through all or a portion of the 33-mile stretch of Interstate 10 (I-10) from the Los Angeles/San Bernardino (LA/SB) county line to Ford Street in San Bernardino County. The project limits, including transition areas, extend from approximately 0.4 mile west of White Avenue in Pomona at Post Mile (PM) 44.9 to Live Oak Canyon Road in Yucaipa at PM 37.0.

This Draft Relocation Impact Statement (DRIS) and attached Exhibit 10-EX-3A were prepared according to Caltrans Right-of-Way (ROW) Guidelines regarding the preparation of relocation impact documents.

The purpose of this DRIS is to provide Caltrans, SANBAG, and the public with information regarding anticipated property acquisitions for, and the potential effects of, the I-10 Corridor Project.

Specifically, the DRIS addresses potential problems that may be caused by the displacement of existing land uses and their owners/occupants by the proposed project alternatives.

This DRIS identifies potential:

- Relocations of residential and nonresidential uses and occupants associated with the proposed project;
- Replacement housing for residents potentially displaced by the proposed project;
- Relocation issues; and
- Recommendations for relocation.

In addition, the DRIS identifies the properties anticipated to be acquired for the project and the availability of replacement properties. The DRIS concludes with a discussion of the relocation assistance that would be provided to displacees by the implementing agency in accordance with State and federal laws.

2. Project Location

The I-10 Corridor Project is located entirely within the southwestern part of the county of San Bernardino, following the existing I-10 corridor from Montclair in the

west to Redlands in the east. The project area is comprised of parcels of land and Caltrans ROW. The approximate center of the project area is located at 34.065549, -117.407819. Project Vicinity and Project Location maps are provided as Figures 1 and 2. The project is located in the following United States Geological Survey (USGS) topographic quadrangle maps:

- Township 1 South, Range 7 West, Section 24, of the *Guasti, California* USGS topographic quadrangle maps, San Bernardino Baseline and Meridian (SBB&M).
- Township 1 South, Range 6 West, Sections 22, 23, and 24, of the *Fontana, California* USGS topographic quadrangle maps, SBB&M.
- Township 1 South, Range 5 West, Section 24, of the *San Bernardino South, California* USGS topographic quadrangle maps, SBB&M.
- Township 1 South, Range 4 West, Sections 19, 20, 21, 22, 23, and 24, of the *San Bernardino South, California* USGS topographic quadrangle maps, SBB&M.
- Township 1 South, Range 3 West, Sections 19, 21, 21, 26, 27, 28, 35, and 36 of the *Redlands, California* USGS topographic quadrangle maps, SBB&M.

All potential relocation impacts for Alternatives 2 and 3 were assessed as part of this study. As such, the potential displacement area for this project consists of the entire project corridor. The replacement area used to assess availability of suitable replacement locations for businesses and residents that may be impacted by the project consists of a 0.5-mile buffer around the project alignment for each alternative.

3. Project Purpose

The purpose of the I-10 Corridor Project is to improve traffic operations on I-10 in San Bernardino County to reduce congestion, increase throughput, and enhance trip reliability for the planning design year of 2045.

The objectives of the project are to:

- Reduce volume-to-capacity (v/c) ratios along the corridor;
- Improve travel times within the corridor;
- Provide a facility that is compatible with transit and other modal options;
- Provide consistency with the Southern California Association of Governments (SCAG) Regional Transportation Plan;
- Provide a cost-effective project solution; and
- Minimize environmental impacts and ROW acquisition.

4. Need for the Project

The deficiencies of I-10 within the project limits are summarized below:

- Substantial portions of the I-10 mainline general purpose (GP) lanes peak-period traffic demand currently exceeds capacity;
- Nearly all of the I-10 mainline GP lanes are projected to exceed capacity in future years; and
- Operation of the I-10 existing mainline high-occupancy vehicle (HOV) lanes is degraded during peak periods.

5. Project Alternatives

A summary of the proposed project alternatives is provided below. For a more detailed discussion of alternatives, please reference Chapter 2 of the Environmental Impact Report (EIR)/Environmental Impact Statement (EIS).

5.1 Alternative 1: No Build Alternative

Alternative 1 (No Build Alternative) would maintain the existing lane configuration of I-10 within the project limits with no additional mainline lanes or associated improvements to be provided.

5.2 Alternative 2: One HOV Lane in Each Direction

Alternative 2 (One HOV Lane in Each Direction) would extend the existing HOV lane in each direction of I-10 from the current HOV terminus near Haven Avenue in Ontario to Ford Street in Redlands, a distance of approximately 25 miles.

5.3 Alternative 3: Two Express Lanes in Each Direction

Alternative 3 (Two Express Lanes in Each Direction) would provide two Express Lanes in each direction of I-10 from the LA/SB county line to California Street (near State Route [SR] 210) in Redlands and one Express Lane in each direction from California Street to Ford Street in Redlands, a total of 33 miles. The Express Lanes would be priced managed lanes in which vehicles not meeting the minimum occupancy requirement would pay a toll. West of Haven Avenue, a single new lane would be constructed and combined with the existing HOV lane to provide two

Express Lanes in each direction; east of Haven Avenue, all Express Lanes would be constructed by the project.

6. Exhibit 10-EX-3A

Consistent with the requirements of the Caltrans ROW Manual, Exhibit 10-EX-3A (Appendix A) was prepared to present the potential full acquisitions associated with the I-10 Corridor Project, along with potential residential and nonresidential relocations and displacements for Alternatives 2 and 3.

The Relocation Impact Statement Mapbook (Appendix B) illustrates potential impacts associated with Alternative 3. As described in Appendix A, no potential displacements are anticipated to result as part of Alternative 2. A list of available properties, in support of Exhibit 10-EX-3A, is provided as Appendix C.

7. References

LoopNet (www.LoopNet.com, accessed June and July 2014).

Zillow (www.Zillow.com, accessed June and July 2014).

This page intentionally left blank.

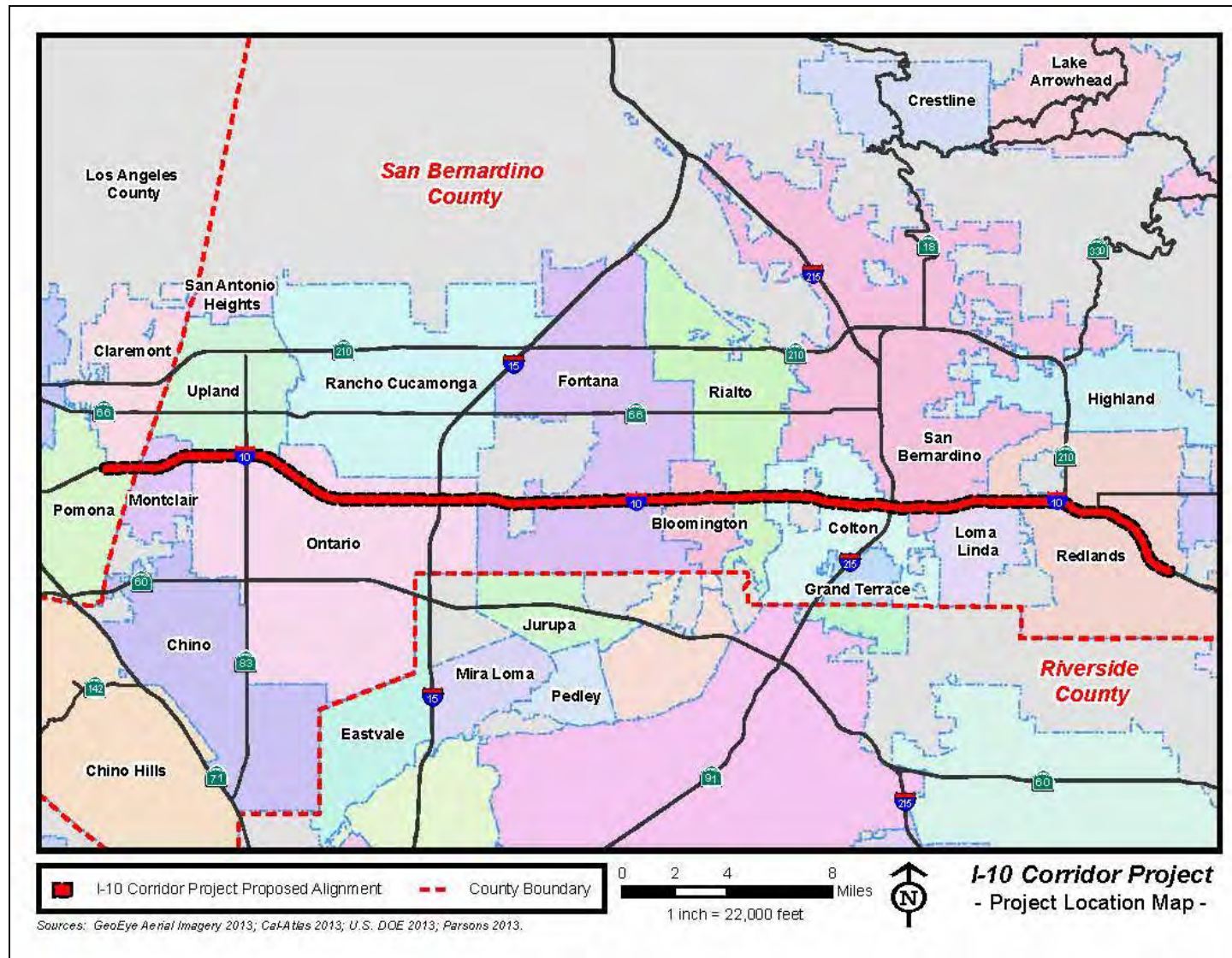


Figure 2: Project Location Map and Study Area

This page intentionally left blank.

Appendix A Exhibit 10-EX-3A

This page intentionally left blank.

Dist.	County	Route	KP (PM)	EA
07	LA	10	44.9 / 48.3	0C2500
08	SBD	10	0.0 / R37.0	
Project Description: Please see the attached continuation page for a description of project alternatives being reviewed for the I-10 Corridor Project.				
	Federal Project No.: 0800000040			

I. Purpose of the Relocation Impact Statement

The purpose of this Draft Relocation Impact Statement (DRIS) is to provide the California Department of Transportation (Caltrans), District 8, local agencies, and the public with information on the impact that the I-10 Corridor Project would potentially have on residential and nonresidential land uses and their occupants. Relocation impacts within the project area are noncomplex, and adequate relocation resources are available for displacees. All displacees will be treated in accordance with the Federal Uniform Relocation Assistance and Real Property Acquisition Policies Act of 1970, as amended, and the California Relocation Act.

II. Summary of Residential and Nonresidential Displacements

Alternative	Single Family Units	Mobile Homes	Multi-Family Units	Total Displacement Units	Residential Displacements (Units/Residents)*	Type and Quantity of Nonresidential Displacements**
2	0	0	0	0	0	0
3	23	0	19	42	109	(1) Water District Pump House; (1) General Office; (7) Automotive Repair (2) Light Industrial (1) Retail
* Estimate of residents is based on an average of 2.58 residents per unit (2010 Census): Source: California State Department of Finance Demographic Research Unit. Residential displacees were not interviewed or contacted to complete surveys.						
** Type of nonresidential units is based on windshield surveys conducted at potential impact sites.						

Alternative 2 would not result in any relocation impacts to residential or nonresidential properties. Alternative 3 would result in 42 residential relocations, leading to displacement of 109 residents. Additionally, Alternative 3 would result in twelve (12) nonresidential relocations as described in the table above. Impacts to residential and nonresidential properties are illustrated in Appendix B.

III. Summary of Relocation Resources Available to Displacees (Residential)

Relocation Resource	For Rent/Lease	For Sale	Total Units
Multi-Family Residences	90	3	93
Single Family Residences	10	123	133

*Sources: Zillow search (www.zillow.com) [accessed June-July 2014]
 Loopnet search (www.loopnet.com) [accessed June-July 2014]

ADA Notice For individuals with disabilities, this document is available in alternate formats. For information, call (916) 654-5413 Voice, CRS: 1-800-735-2929, or write Right-of-Way, 1120 N Street, MS-37, Sacramento, CA 95814.

IV. Summary of Relocation Resources Available to Displacees (Nonresidential)

Relocation Resource*	For Rent/Lease	For Sale	Total Units
Office Complex	7	2	9
Industrial Complex	10	13	23
Commercial/Retail Operation	21	10	31
Other: Vacant land	1	9	10

*Sources: Zillow search (www.zillow.com [accessed June-July 2014])
 Loopnet search (www.loopnet.com [accessed June-July 2014])

V. Statement of Findings

Alternatives 1 (No Build) and 2 (One High-Occupancy Vehicle [HOV] Lane in Each Direction) would not result in any relocation impacts; therefore, relocation resources would not be required for either of these alternatives.

Alternative 3 (Two Express Lanes in Each Direction) would result in 42 residential relocations and twelve (12) nonresidential relocations. Based on the current availability of residential units and rental vacancy units in the cities of Montclair, Ontario, and Fontana, as listed in Appendix C, sufficient residential replacement properties exist for the potential relocations that would result from construction of Alternative 3.

Based on the current availability of nonresidential properties for lease or sale in the cities of Montclair, Fontana, Rialto, and Colton, a sufficient number of replacement properties similar to the displaced properties are available on the market. Additional relocation resources for commercial and industrial uses may become available in the replacement area. Furthermore, adjacent cities may be considered for both residential and nonresidential relocations, if necessary.

The needs of the relocated residents and businesses will be assessed in more detail during interviews during development of the project's Final Environmental Document.

- VI. All displacees will be contacted by a Relocation Agent, who will ensure that eligible displacees receive their full relocation benefits, including advisory assistance, and that all activities will be conducted in accordance with the Uniform Relocation Assistance and Real Property Acquisition Policies Act of 1970, as amended. Relocation resources shall be available to all displacees free of discrimination. At the time of the first written offer to purchase, owner occupants are given a detailed explanation of Caltrans' "Relocation Program and Services." Tenant occupants of properties to be acquired are contacted soon after the first written offer to purchase and also are given a detailed explanation of Caltrans' "Relocation Program and Services." In accordance with the Uniform Relocation Assistance and Real Property Acquisition Policies Act of 1970, as amended, Caltrans will provide relocation advisory assistance to any person, business, farm, or nonprofit organization displaced as a result of the acquisition of real property for public use.

 Right-of-Way Agent

 Date

APPROVED:

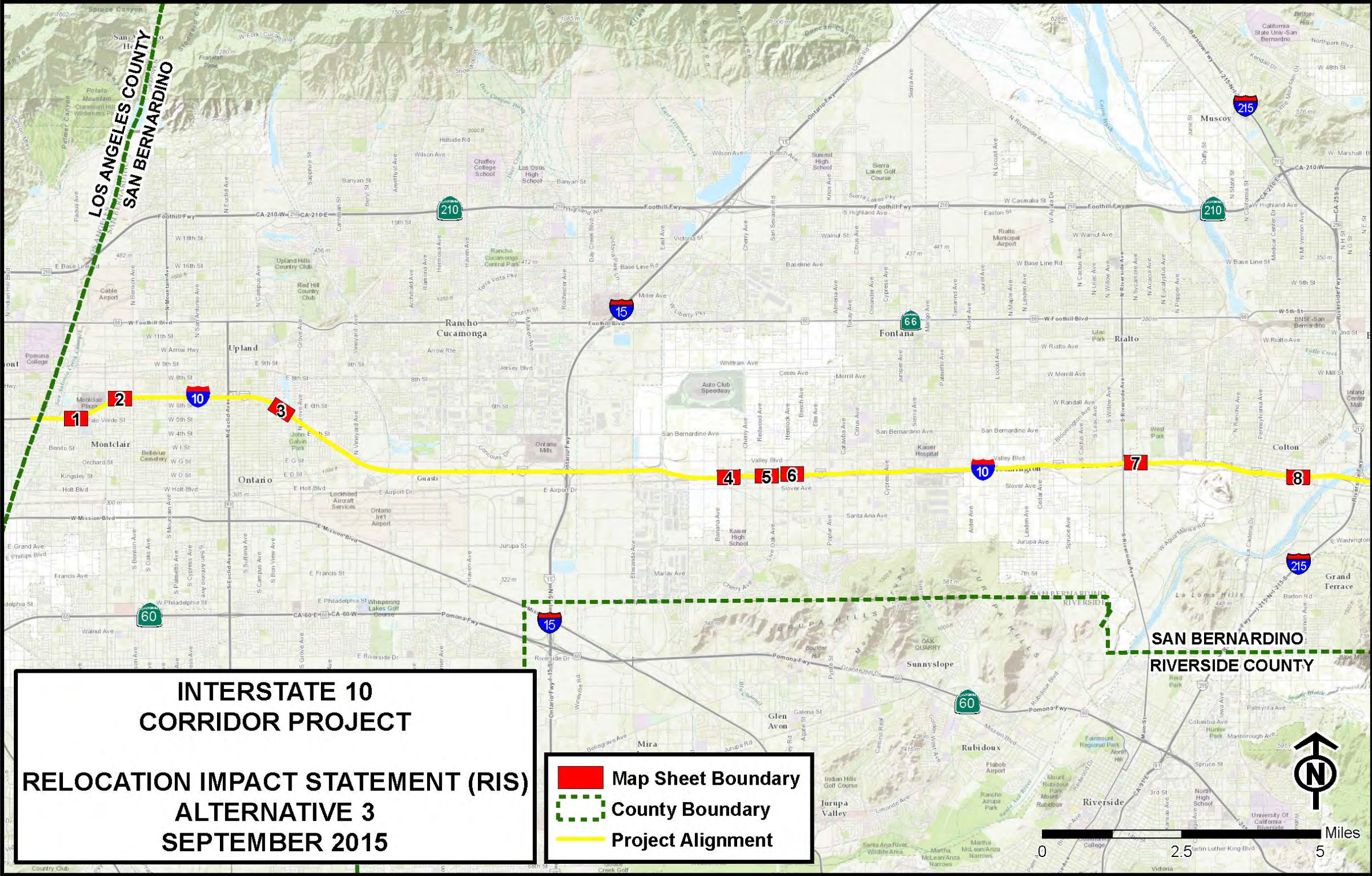
 Senior Right-of-Way Agent

 Date

c: Project Manager
 Project Engineer
 Environmental Region/District
 RW DDC Region/District P&M

Appendix B Relocation Impact Statement Mapbook for Alternative 3

This page intentionally left blank.

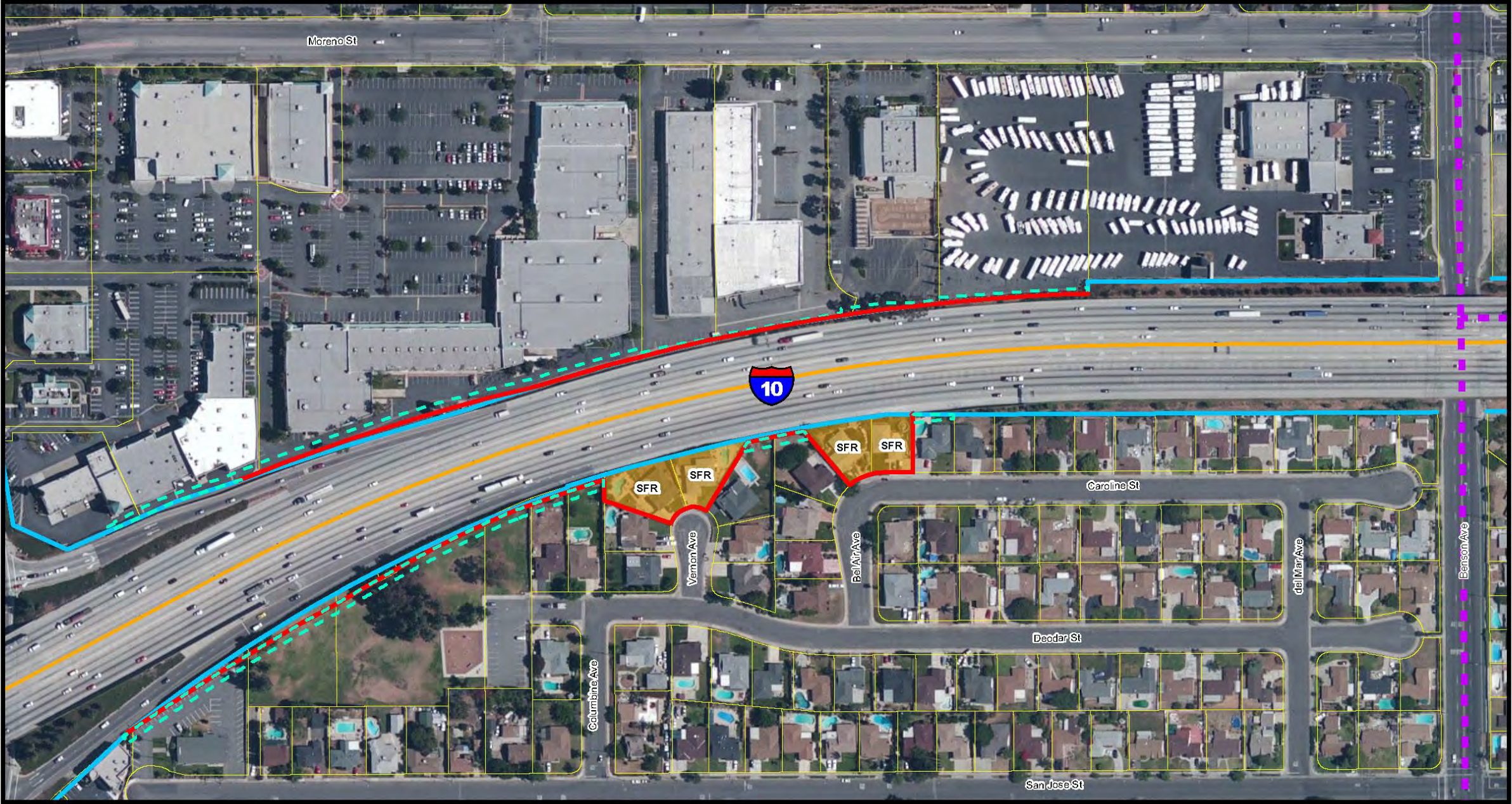


This page intentionally left blank.

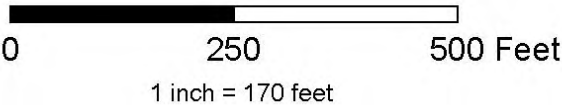


Sources: GeoEye Aerial Imagery 2013; Cal-Atlas 2013; U.S. DOE 2013; Parsons 2015.
* The Proposed ROW follows the Existing ROW unless drawn otherwise.

This page intentionally left blank.

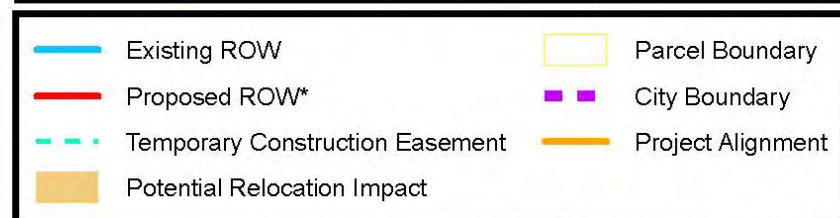


Sources: GeoEye Aerial Imagery 2013; Cal-Atlas 2013; U.S. DOE 2013; Parsons 2015.
* The Proposed ROW follows the Existing ROW unless drawn otherwise.

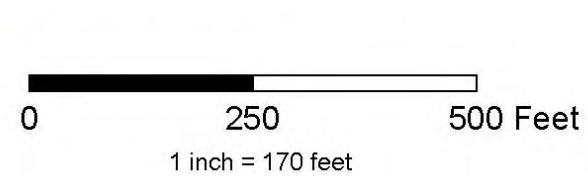


I-10 Corridor Project
Map of Potential
Relocation Impacts
for Alternative 3
Sheet 2 of 8

This page intentionally left blank.

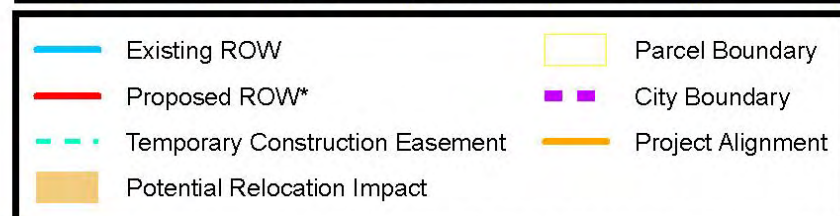
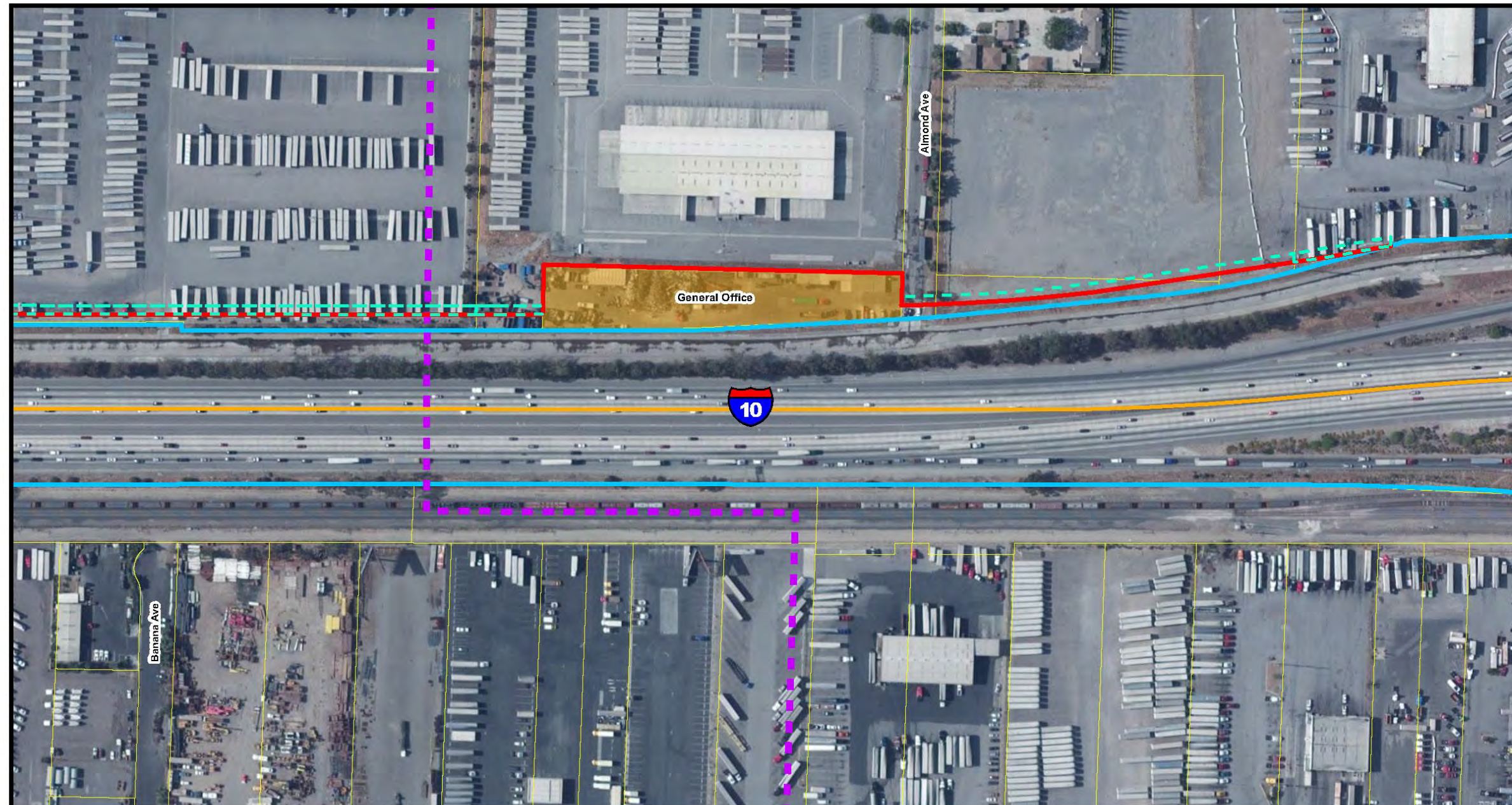


Sources: GeoEye Aerial Imagery 2013; Cal-Atlas 2013; U.S. DOE 2013; Parsons 2015.
 * The Proposed ROW follows the Existing ROW unless drawn otherwise.

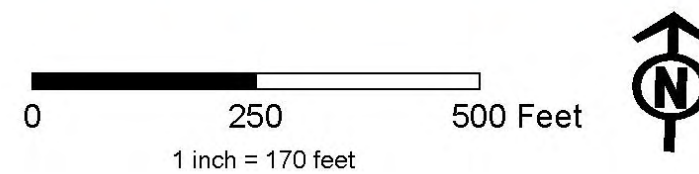


I-10 Corridor Project
Map of Potential
Relocation Impacts
for Alternative 3
Sheet 3 of 8

This page intentionally left blank.

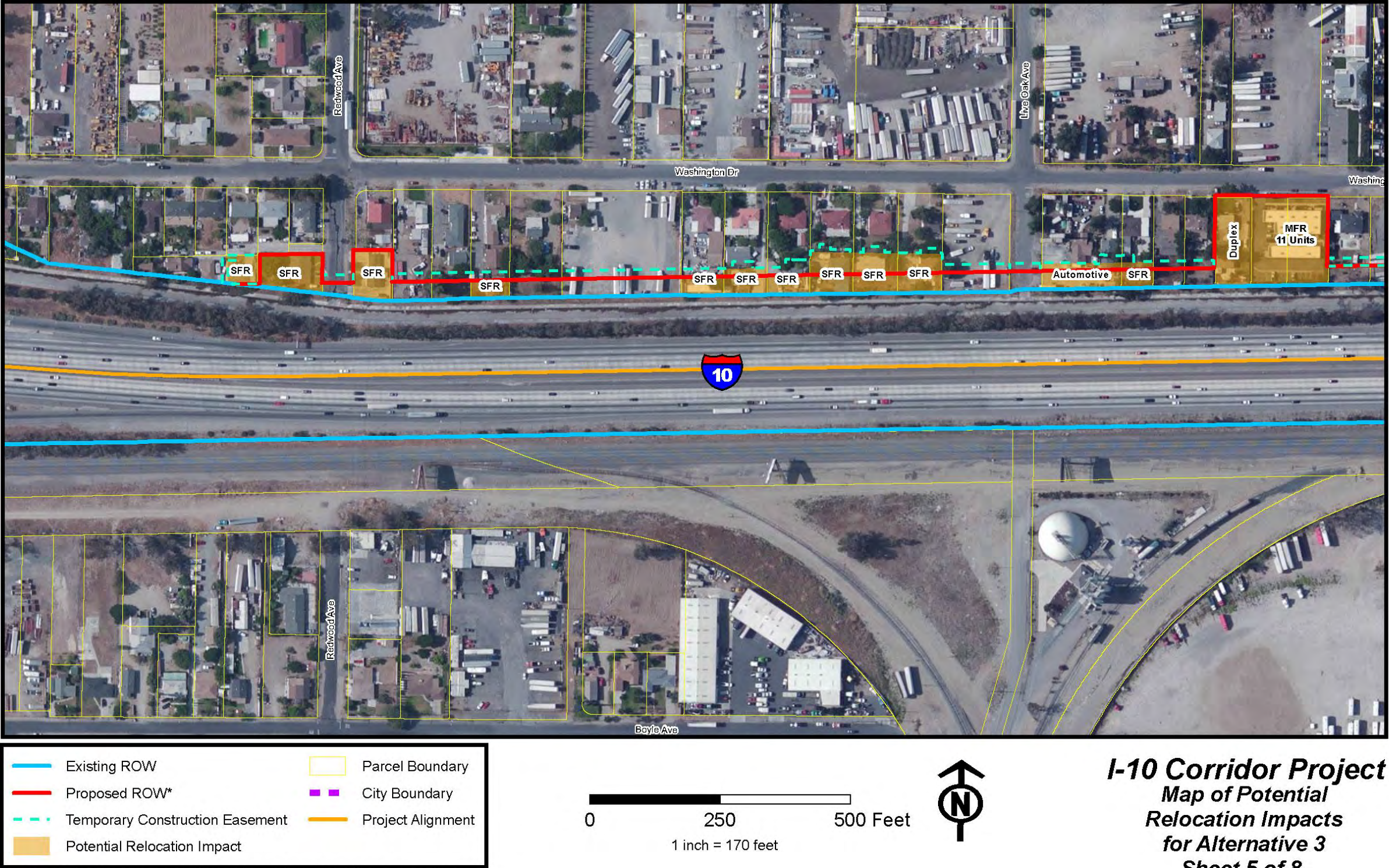


Sources: GeoEye Aerial Imagery 2013; Cal-Atlas 2013; U.S. DOE 2013; Parsons 2015.
 * The Proposed ROW follows the Existing ROW unless drawn otherwise.



I-10 Corridor Project
Map of Potential
Relocation Impacts
for Alternative 3
Sheet 4 of 8

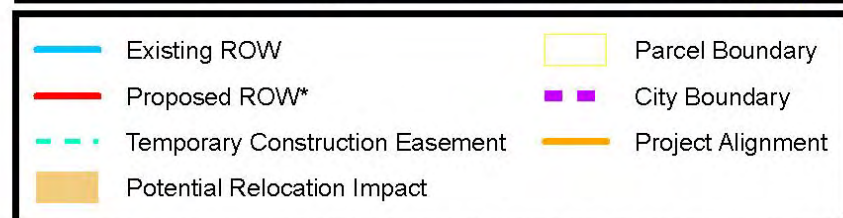
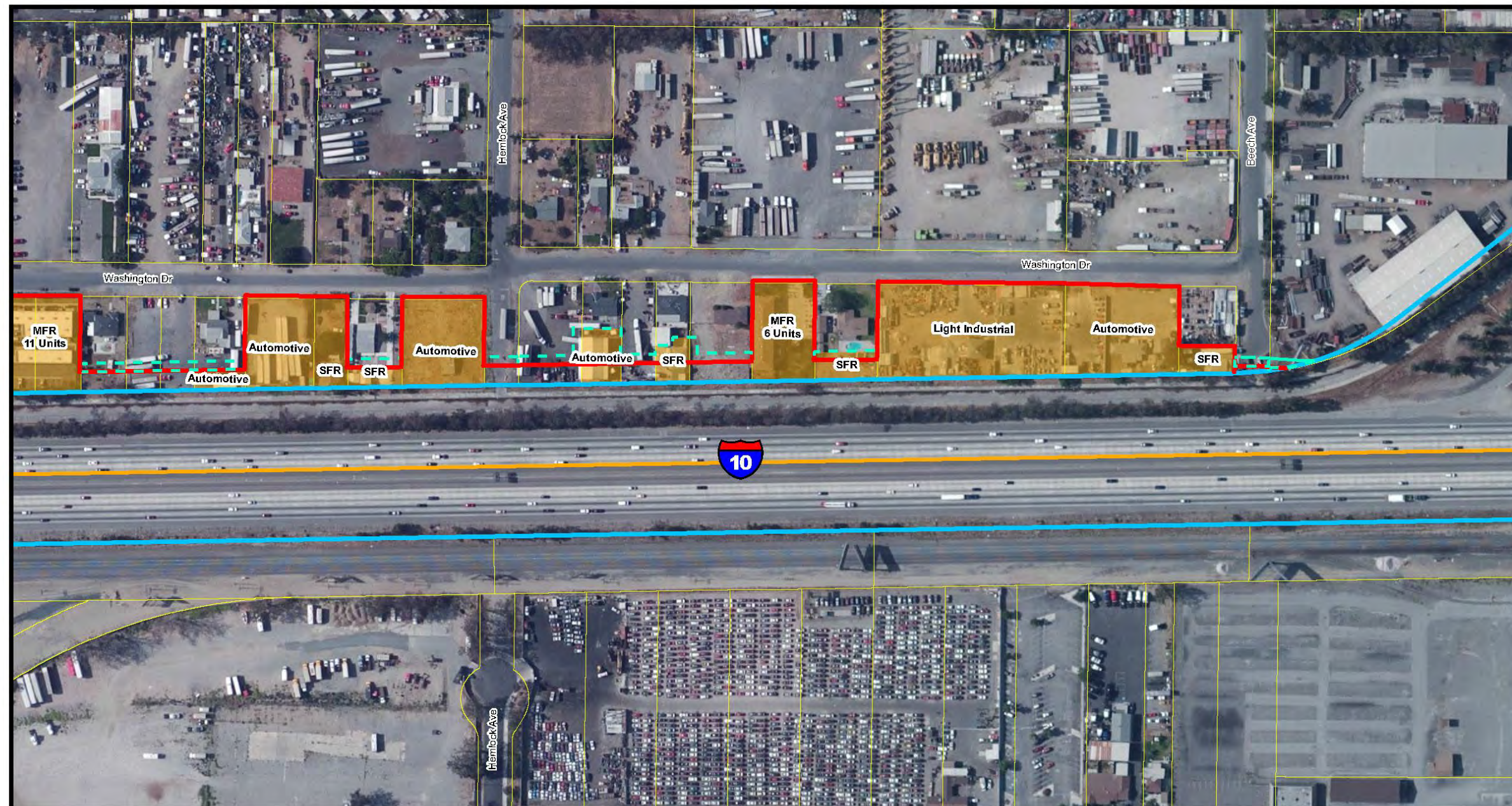
This page intentionally left blank.



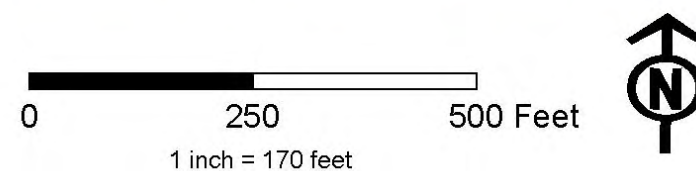
Sources: GeoEye Aerial Imagery 2013; Cal-Atlas 2013; U.S. DOE 2013; Parsons 2015.
* The Proposed ROW follows the Existing ROW unless drawn otherwise.

I-10 Corridor Project
Map of Potential
Relocation Impacts
for Alternative 3
Sheet 5 of 8

This page intentionally left blank.

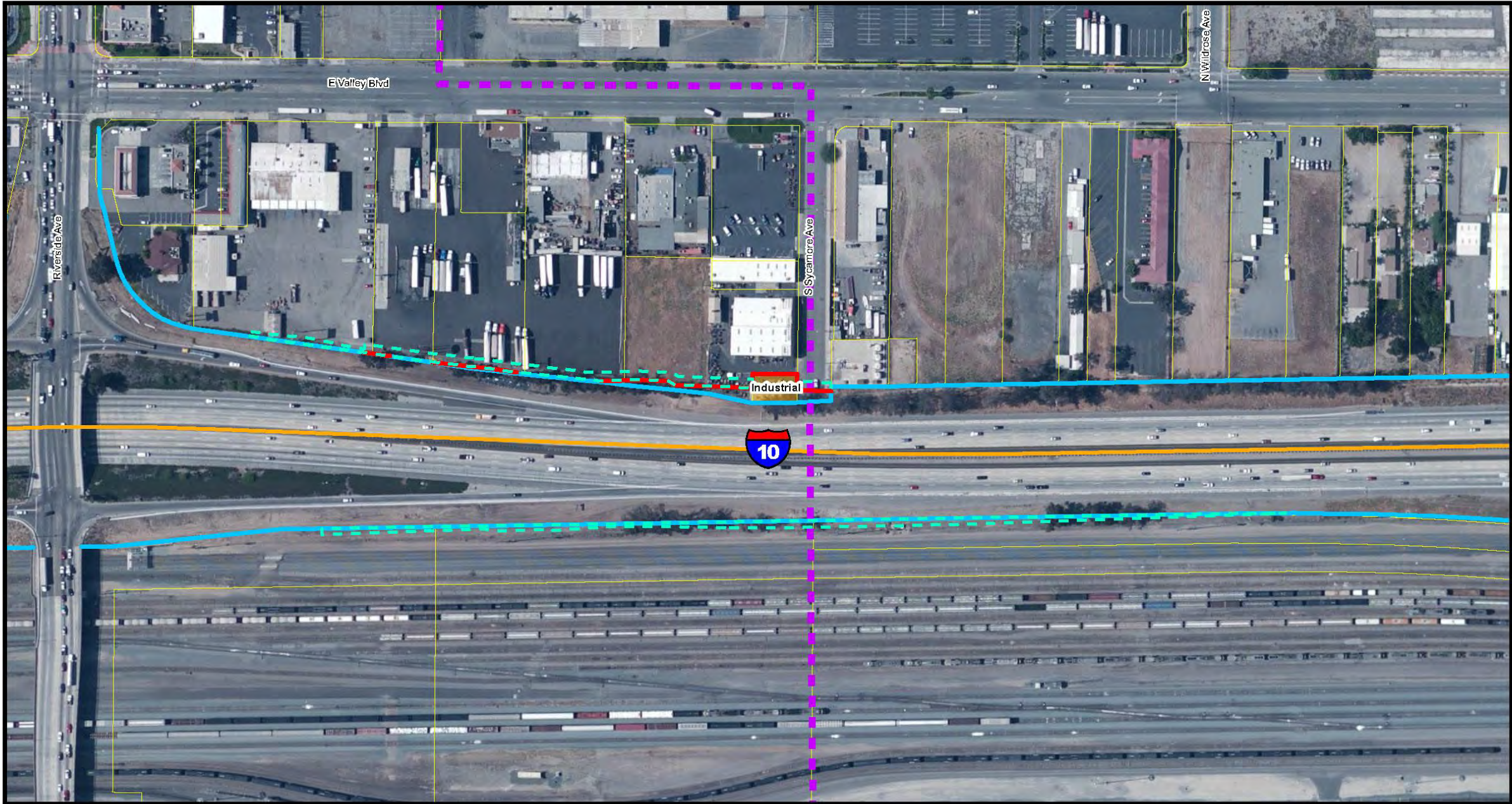


Sources: GeoEye Aerial Imagery 2013; Cal-Atlas 2013; U.S. DOE 2013; Parsons 2015.
 * The Proposed ROW follows the Existing ROW unless drawn otherwise.



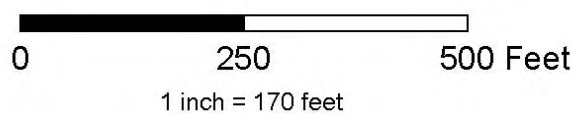
I-10 Corridor Project
Map of Potential
Relocation Impacts
for Alternative 3
Sheet 6 of 8

This page intentionally left blank.



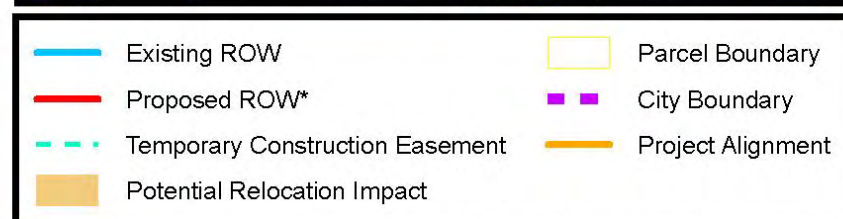
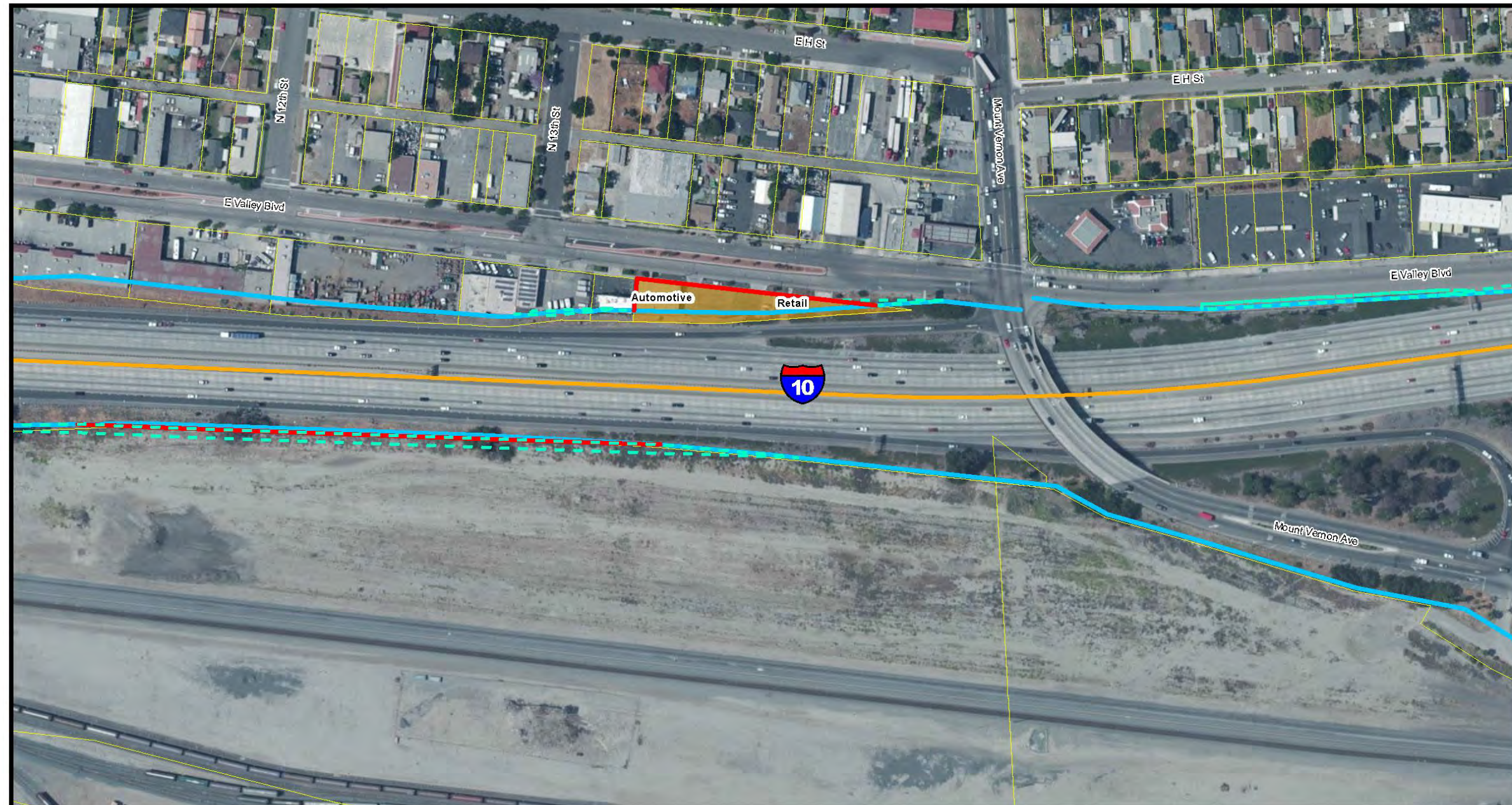
Existing ROW	Parcel Boundary
Proposed ROW*	City Boundary
Temporary Construction Easement	Project Alignment
Potential Relocation Impact	

Sources: GeoEye Aerial Imagery 2013; Cal-Atlas 2013; U.S. DOE 2013; Parsons 2015.
* The Proposed ROW follows the Existing ROW unless drawn otherwise.

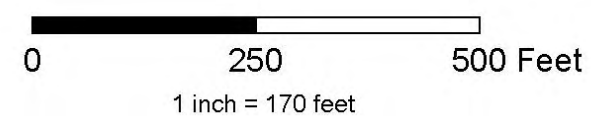


I-10 Corridor Project
Map of Potential
Relocation Impacts
for Alternative 3
Sheet 7 of 8

This page intentionally left blank.



Sources: GeoEye Aerial Imagery 2013; Cal-Atlas 2013; U.S. DOE 2013; Parsons 2015.
 * The Proposed ROW follows the Existing ROW unless drawn otherwise.



I-10 Corridor Project
Map of Potential
Relocation Impacts
for Alternative 3
Sheet 8 of 8

This page intentionally left blank.

Appendix C Available Relocation Properties

This page intentionally left blank.

I-10 Corridor Project
Relocation Impact Study: Available Relocation Resources

Alternative 3								
City/ Jurisdiction	Property Type	For Rent/For Sale/Lease	Address	Zip Code	Price	Size	Date Accessed	Database
Pomona	SF Home	For Sale	1785 Russell Pl.	91767	\$309,000.00	3 BR, 1 BA	6/12/2014	http://www.zillow.com
Pomona	SF Home	For Sale	1592 College Ave.	91767	\$324,000.00	3 BR, 2 BA	6/16/2014	http://www.zillow.com
Claremont	SF Home	For Sale	412 Westpoint Dr.	91711	\$250,000.00	3 BR, 1 BA	6/12/2014	http://www.zillow.com
Claremont	SF Home	For Sale	362 Sycamore Ave.	91711	\$440,000.00	3 BR, 2 BA	6/12/2014	http://www.zillow.com
Claremont	SF Home	For Sale	620 Sycamore Ave	91711	\$240,000.00	2 BR, 1 BA	6/12/2014	http://www.zillow.com
Claremont	SF Home	For Sale	NA	91711	\$419,000.00	3 BR, 2 BA	6/12/2014	http://www.zillow.com
Claremont	SF Home	For Sale	204 Buena Vista Dr.	91711	\$465,000.00	4 BR, 2 BA	6/12/2014	http://www.zillow.com
Claremont	SF Home	For Rent	181 Bryn Mawr Road	91711	\$1,725.00/mo	3 BR, 1 BA	6/12/2014	http://www.zillow.com
Claremont	SF Home	For Sale	115 E American Ave.	91711	\$425,000.00	3 BR, 2 BA	6/12/2014	http://www.zillow.com
Claremont	SF Home	For Sale	155 E American Ave.	91711	\$425,000.00	3 BR, 2 BA	6/12/2014	http://www.zillow.com
Claremont	SF Home	For Sale	821 S. College Ave	91711	\$389,000.00	3 BR, 2 BA	6/16/2014	http://www.zillow.com
Claremont	SF Home	For Sale	204 Buena Vista Dr.	91711	\$465,000.00	4 BR, 2 BA	6/12/2014	http://www.zillow.com
Montclair	SF Home	For Sale	5573 San Jose St.	91763	\$359,900.00	3 BR, 2 BA	6/12/2014	http://www.zillow.com
Montclair	SF Home	For Sale	5553 Hawthorne St.	91763	\$363,000.00	3 BR, 2 BA	6/12/2014	http://www.zillow.com
Montclair	SF Home	For Sale	5515 La Deney St.	91763	\$379,000.00	4 BR, 2 BA	6/12/2014	http://www.zillow.com
Montclair	SF Home	For Sale	5490 Cambridge St.	91763	\$300,000.00	3 BR, 2 BA	6/12/2014	http://www.zillow.com
Montclair	SF Home	For Sale	5415 Palo Verde St.	91763	\$351,000.00	3 BR, 2 BA	6/12/2014	http://www.zillow.com
Montclair	SF Home	For Sale	9601 Carrillo Ave.	91763	\$308,000.00	3 BR, 2 BA	6/12/2014	http://www.zillow.com
Montclair	SF Home	For Sale	9519 Fremont Ave.	91763	\$374,500.00	4 BR, 2 BA	6/12/2014	http://www.zillow.com
Montclair	SF Home	For Sale	4878 Yale Street	91763	\$380,000.00	4 BR, 3 BA	6/12/2014	http://www.zillow.com
Montclair	SF Home	For Sale	9617 Surrey Ave.	91763	\$436,000.00	4 BR, 3 BA	6/12/2014	http://www.zillow.com
Montclair	SF Home	For Rent	9432 Shadowood Dr.	91763	\$1,295/mo	2 BR, 1.5 BA	6/12/2014	http://www.zillow.com
Montclair	SF Home	For Sale	4630 San Jose St.	91763	\$225,000.00	3 BR, 2 BA	6/12/2014	http://www.zillow.com
Montclair	SF Home	For Sale	4630 San Jose St.	91763	\$225,000.00	3 BR, 2 BA	6/12/2014	http://www.zillow.com
Montclair	SF Home	For Rent	4585 Hawthorne St.	91763	\$2,100.00/mo	4 BR, 2 BA	6/12/2014	http://www.zillow.com
Montclair	SF Home	For Sale	9606 Camulos Ave.	91763	\$318,000.00	3 BR, 2 BA	6/12/2014	http://www.zillow.com
Montclair	SF Home	For Rent	NA	91763	\$1,700.00/mo	4 BR, 2 BA	6/12/2014	http://www.zillow.com
Montclair	SF Home	For Sale	4468 Harvard Street	91763	\$324,900.00	4 BR, 2 BA	6/12/2014	http://www.zillow.com
Montclair	SF Home	For Sale	5445 San Bernardino St.	91763	\$329,900.00	4 BR, 2 BA	6/12/2014	http://www.zillow.com
Montclair	SF Home	For Sale	5428 Rosewood St.	91763	\$276,000.00	4 BR, 1.5 BA	6/16/2014	http://www.zillow.com
Montclair	SF Home	For Sale	5389 Rosewood St.	91763	\$287,000.00	4 BR, 1 BA	6/12/2014	http://www.zillow.com
Montclair	SF Home	For Sale	9836 Rose Ave.	91763	\$135,000.00	4 BR, 1 BA	6/12/2014	http://www.zillow.com

I-10 Corridor Project
Relocation Impact Study: Available Relocation Resources

City/ Jurisdiction	Property Type	For Rent/For Sale/Lease	Address	Zip Code	Price	Size	Date Accessed	Database
Montclair	SF Home	For Sale	5402 Alamos St.	91763	\$309,000.00	4 BR, 2 BA	6/12/2014	http://www.zillow.com
Montclair	SF Home	For Sale	5409 Berkeley St.	91763	\$329,900.00	3 BR, 2 BA	6/12/2014	http://www.zillow.com
Montclair	SF Home	For Sale	9723 Fremont Ave.	91763	\$263,000.00	3 BR, 3 BA	6/12/2014	http://www.zillow.com
Montclair	SF Home	For Sale	9601 Carrillo Ave.	91762	\$309,000.00	3 BR, 2 BA	6/12/2014	http://www.zillow.com
Montclair	SF Home	For Sale	5234 San Bernardino St.	91763	\$295,000.00	3 BR, 2 BA	6/12/2014	http://www.zillow.com
Montclair	SF Home	For Sale	5445 San Bernardino St.	91763	\$329,900.00	4 BR, 2 BA	6/12/2014	http://www.zillow.com
Montclair	SF Home	For Rent	5195 Steamboat Dr.	91763	\$1,600.00/mo	3 BR, 2.5 BA	6/16/2014	http://www.zillow.com
Montclair	SF Home	For Sale	9842 Mammoth Dr.	91763	\$277,000.00	3 BR, 2.5 BA	6/12/2014	http://www.zillow.com
Montclair	SF Home	For Sale	5172 Village Dr.	91763	\$254,900.00	3 BR, 2 BA	6/12/2014	http://www.zillow.com
Montclair	SF Home	For Sale	9719 Fremont Ave.	91763	\$206,000.00	3 BR, 2 BA	6/12/2014	http://www.zillow.com
Montclair	SF Home	For Sale	9811 Snowmass Dr.	91763	\$262,000.00	3 BR, 3 BA	6/12/2014	http://www.zillow.com
Montclair	SF Home	For Sale	9819 Sun Valley	91763	\$260,000.00	3 BR, 3 BA	6/16/2014	http://www.zillow.com
Montclair	SF Home	For Sale	9829 Fremont Ave.	91763	\$220,000.00	2 BR, 2 BA	6/12/2014	http://www.zillow.com
Montclair	SF Home	For Sale	9827 Lindero Ave.	91763	\$263,000.00	3 BR, 1 BA	6/12/2014	http://www.zillow.com
Montclair	SF Home	For Sale	4843 Berkeley St.	91763	\$355,000.00	BR 4, BA 2	6/16/2014	http://www.zillow.com
Montclair	SF Home	For Sale	4730 Benito St.	91763	\$304,000.00	4 BR, 1.5 BA	6/16/2014	http://www.zillow.com
Montclair	SF Home	For Sale	9824 Tudor Ave.	91763	\$283,000.00	4 BR, 1.5 BA	6/12/2014	http://www.zillow.com
Montclair	SF Home	For Sale	9812 Bolton Ave.	91763	\$320,000.00	4 BR, 2 BA	6/12/2014	http://www.zillow.com
Montclair	SF Home	For Sale	4805 San Bernardino St.	91763	\$270,000.00	4 BR, 2 BA	6/12/2014	http://www.zillow.com
Montclair	SF Home	For Sale	9833 Bolton Ave.	91763	\$290,000.00	4 BR, 1.5 BA	6/16/2014	http://www.zillow.com
Montclair	SF Home	For Sale	4597 Rosewood St.	91763	\$357,000.00	4 BR, 2 BA	6/16/2014	http://www.zillow.com
Montclair	SF Home	For Sale	9850 Felipe Ave.	91763	\$299,000.00	4 BR, 2 BA	6/16/2014	http://www.zillow.com
Montclair	SF Home	For Rent	4368 Benito St.	91763	\$1,795/mo	4 BR, 2 BA	6/16/2014	http://www.zillow.com
Montclair	SF Home	For Sale	4546 Benito St.	91763	\$377,000.00	3 BR, 2 BA	6/16/2014	http://www.zillow.com
Montclair	SF Home	For Sale	9853 Ramona Ave.	91763	\$549,900.00	3 BR, 3 BA	6/12/2014	http://www.zillow.com
Montclair	SF Home	For Sale	9866 Helena Ave.	91763	\$321,000.00	4 BR, 2 BA	6/16/2014	http://www.zillow.com
Montclair	SF Home	For Sale	9619 Carrillo Ave.	91763	\$369,000.00	3 BR, 2 BA	6/16/2014	http://www.zillow.com
Montclair	SF Home	For Sale	9354 Benson Ave.	91763	\$302,000.00	3 BR, 2 BA	6/12/2014	http://www.zillow.com
Montclair	SF Home	For Sale	5573 San Jose St.	91763	\$359,900.00	3 BR, 2 BA	6/12/2014	http://www.zillow.com
Montclair	SF Home	For Sale	5515 La Deney St.	91763	\$379,000.00	4 BR, 2 BA	6/12/2014	http://www.zillow.com
Montclair	SF Home	For Sale	5490 Cambridge St.	91763	\$300,000.00	3 BR, 2 BA	6/12/2014	http://www.zillow.com
Montclair	SF Home	For Sale	5415 Palo Verde St.	91763	\$351,000.00	3 BR, 2 BA	6/12/2014	http://www.zillow.com
Montclair	SF Home	For Sale	9020 Fremont Ave.	91763	\$326,000.00	3 BR, 2 BA	6/12/2014	http://www.zillow.com

I-10 Corridor Project
Relocation Impact Study: Available Relocation Resources

City/ Jurisdiction	Property Type	For Rent/For Sale/Lease	Address	Zip Code	Price	Size	Date Accessed	Database
Montclair	SF Home	For Sale	9601 Carillo Ave.	91763	\$308,000.00	3 BR, 2 BA	6/12/2014	http://www.zillow.com
Montclair	SF Home	For Sale	9519 Fremont Ave.	91763	\$374,500.00	4 BR, 2 BA	6/12/2014	http://www.zillow.com
Montclair	SF Home	For Sale	4878 Yale St.	91763	\$380,000.00	4 BR, 3 BA	6/12/2014	http://www.zillow.com
Montclair	SF Home	For Sale	9617 Surrey Ave.	91763	\$436,000.00	4 BR, 3 BA	6/12/2014	http://www.zillow.com
Montclair	SF Home	For Sale	9301 Shadowood Dr. Apt B	91763	\$189,000.00	3 BR, 3 BA	6/12/2014	http://www.zillow.com
Montclair	SF Home	For Sale	5553 Hawthorne St.	91763	\$363,000.00	3 BR, 3 BA	6/12/2014	http://www.zillow.com
Upland	SF Home	For Sale	227 Sinclair Ave.	91786	\$159,000.00	2 BR, 2 BA	6/12/2014	http://www.zillow.com
Upland	SF Home	For Sale	1333 Maxwell Lane	91786	\$190,000.00	2 BR, 1 BA	6/12/2014	http://www.zillow.com
Upland	SF Home	For Sale	146 Irving Way	91786	\$348,000.00	3 BR, 2 BA	6/12/2014	http://www.zillow.com
Upland	SF Home	For Sale	193 Montrose Ave.	91786	\$383,000.00	3 BR, 2 BA	6/12/2014	http://www.zillow.com
Upland	SF Home	For Rent	1300 Primrose St.	91786	\$1,250/mo	2 BR, 1 BA	6/16/2014	http://www.zillow.com
Ontario	SF Home	For Sale	1038 W. 5th St.	91762	\$276,000.00	3 BR, 2 BA	6/12/2014	http://www.zillow.com
Ontario	SF Home	For Sale	1063 W. 5th St.	91762	\$308,000.00	2 BR, 2 BA	6/12/2014	http://www.zillow.com
Ontario	SF Home	For Sale	1105 W. Yale St.	91762	\$316,000.00	3 BR, 2 BA	6/12/2014	http://www.zillow.com
Ontario	SF Home	For Sale	1038 W. 5th St.	91762	\$316,000.00	3 BR, 2 BA	6/12/2014	http://www.zillow.com
Ontario	SF Home	For Sale	1063 W. 5th St.	91762	\$308,000.00	2 BR, 2 BA	6/12/2014	http://www.zillow.com
Ontario	SF Home	For Sale	1105 W. Yale St.	91762	\$347,00.00	3 BR, 2 BA	6/12/2014	http://www.zillow.com
Ontario	SF Home	For Sale	NA	91762	\$185,000.00	2 BR, 2.5 BA	6/12/2014	http://www.zillow.com
Ontario	SF Home	For Sale	1423 N. Elderberry Ave.	91762	\$219,999.00	3 BR, 2.5 BA	6/12/2014	http://www.zillow.com
Ontario	SF Home	For Sale	1437 N. Elderberry Ave.	91762	\$224,990.00	3 BR, 3 BA	6/12/2014	http://www.zillow.com
Ontario	SF Home	For Sale	1556 N. Fuchsia Ave.	91762	\$336,000.00	3 BR, 2.5 BA	6/12/2014	http://www.zillow.com
Ontario	SF Home	For Sale	1505 N. Elderberry Ct.	91762	\$398,000.00	5 BR, 3 BA	6/12/2014	http://www.zillow.com
Ontario	SF Home	For Sale	1533 N. Gardenia Ct.	91762	\$369,900.00	3 BR, 2 BA	6/12/2014	http://www.zillow.com
Ontario	SF Home	For Sale	1437 W. Deodar St.	91762	\$336,000.00	3 BR, 2 BA	6/12/2014	http://www.zillow.com
Ontario	SF Home	For Sale	1401 N. Elderberry Ave.	91762	\$195,000.00	2 BR, 2 BA	6/12/2014	http://www.zillow.com
Ontario	SF Home	For Sale	1377 N. Elderberry Ave.	91762	\$164,900.00	2 BR, 1 BA	6/12/2014	http://www.zillow.com
Ontario	SF Home	For Sale	1447 W. La Deney	91762	\$354,000.00	4 BR, 1.75 BA	6/12/2014	http://www.zillow.com
Ontario	SF Home	For Sale	1531 Armsley Sq.	91762	\$320,000.00	3 BR, 3 BA	6/12/2014	http://www.zillow.com
Fontana	SF Home	For Sale	15188 Slover Ave.	92337	\$229,000.00	2 BR, 1 BA	6/16/2014	http://www.zillow.com
Fontana	SF Home	For Sale	14635 Boyle Ave.	92337	\$169,000.00	2 BR, 1 BA	6/16/2014	http://www.zillow.com
Fontana	SF Home	For Sale	15069 Valley Blvd.	92335	\$11,000.00	1 BR, 1 BA	6/16/2014	http://www.zillow.com
Fontana	SF Home	For Sale	9998 Calabash Ave.	92335	\$237,000.00	4 BR, 2 BA	6/16/2014	http://www.zillow.com
Fontana	SF Home	For Sale	13994 Rosemary Dr.	92335	\$229,000.00	3 BR, 2 BA	6/16/2014	http://www.zillow.com

I-10 Corridor Project
Relocation Impact Study: Available Relocation Resources

City/ Jurisdiction	Property Type	For Rent/For Sale/Lease	Address	Zip Code	Price	Size	Date Accessed	Database
Fontana	SF Home	For Sale	9916 Live Oak Ave.	92335	\$162,000.00	2 BR, 1 BA	6/16/2014	http://www.zillow.com
Fontana	SF Home	For Sale	14951 El Molino St.	92335	\$359,900.00	4 BR, 2 BA	6/16/2014	http://www.zillow.com
Fontana	SF Home	For Sale	14986 Rosemary Dr.	92335	\$206,000.00	3 BR, 1.5 BA	6/16/2014	http://www.zillow.com
Fontana	SF Home	For Sale	9868 Carob Ave.	92335	\$283,000.00	4 BR, 2 BA	6/16/2014	http://www.zillow.com
Fontana	SF Home	For Sale	9917 Fontana Ave.	92335	\$249,900.00	Studio	6/16/2014	http://www.zillow.com
Fontana	SF Home	For Sale	15327 Rosemary Dr.	92335	\$192,000.00	3 BR, 1.5 BA	6/16/2014	http://www.zillow.com
Fontana	SF Home	For Sale	15358 Mallory Dr.	92335	\$230,000.00	3 BR, 2 BA	6/16/2014	http://www.zillow.com
Fontana	SF Home	For Sale	9944 Maloof Ct.	92335	\$224,000.00	4 BR, 2 BA	6/16/2014	http://www.zillow.com
Fontana	SF Home	For Sale	9963 Lime Ave.	92335	\$227,000.00	3 BR, 2 BA	6/16/2014	http://www.zillow.com
Fontana	SF Home	For Sale	15673 Iris Dr.	92335	\$254,000.00	4 BR, 2 BA	6/16/2014	http://www.zillow.com
Fontana	SF Home	For Sale	9784 Poplar Ave.	92335	\$245,000.00	3 BR, 2 BA	6/16/2014	http://www.zillow.com
Fontana	SF Home	For Rent	16022 Aliso Dr.	92337	\$1,950/mo	3 BR, 2 BA	6/16/2014	http://www.zillow.com
Fontana	SF Home	For Sale	16065 Boyle Ave.	92337	\$189,000.00	2 BR, 2 BA	6/16/2014	http://www.zillow.com
Fontana	SF Home	For Sale	15980 Rosemary Dr.	92335	\$147,000.00	2 BR, 1 BA	6/16/2014	http://www.zillow.com
Fontana	SF Home	For Sale	9887 Niagara Ave.	92335	\$188,000.00	3 BR, 2 BA	6/16/2014	http://www.zillow.com
Fontana	SF Home	For Sale	9868 Catawba Ave.	92335	\$222,000.00	3 BR, 2 BA	6/16/2014	http://www.zillow.com
Fontana	SF Home	For Rent	9878 Almeria Ave.	92335	\$1,600/mo	3 BR, 2 BA	6/16/2014	http://www.zillow.com
Bloomington	SF Home	For Sale	1444 S. San Dimas Ave.	92316	\$229,000.00	3 BR, 2 BA	6/17/2014	http://www.zillow.com
Bloomington	SF Home	For Sale	1534 S. Lilac Ave.	92316	\$199,997.00	3 BR, 2 BA	6/17/2014	http://www.zillow.com
Rialto	SF Home	For Sale	1744 S. Willow Ave.	92376	\$249,000.00	3 BR, 2 BA	6/17/2014	http://www.zillow.com
Rialto	SF Home	For Sale	213 W. Valley Blvd.	92376	\$850,000.00	Studio	6/17/2014	http://www.zillow.com
Colton	SF Home	For Sale	578 Award Dr.	92324	\$250,000.00	4 BR, 2 BA	6/17/2014	http://www.zillow.com
Colton	SF Home	For Sale	818 Shasta Dr.	92324	\$399,000.00	Studio	6/17/2014	http://www.zillow.com
Colton	SF Home	For Sale	360 E. N St.	92324	\$169,000.00	3 BR, 1 BA	6/17/2014	http://www.zillow.com
Colton	SF Home	For Rent	310 N. 10th St.	92324	\$1,295/mo	3 BR, 2.5 BA	6/17/2014	http://www.zillow.com
Colton	SF Home	For Sale	481 N. 9th St.	92324	\$799,000.00	9 BR, 9 BA	6/17/2014	http://www.zillow.com
Colton	SF Home	For Sale	531 W. O St.	92324	\$172,000.00	2 BR, 2 BA	6/17/2014	http://www.zillow.com
Colton	SF Home	For Sale	458 W. K St.	92324	\$195,000.00	3 BR, 2 BA	6/17/2014	http://www.zillow.com
Colton	SF Home	For Sale	735 W. K St.	92324	\$229,000.00	5 BR, 2 BA	6/17/2014	http://www.zillow.com
Colton	SF Home	For Sale	404 W. H St.	92324	\$135,000.00	2 BR, 1 BA	6/17/2014	http://www.zillow.com
Colton	SF Home	For Sale	517 W. Valley Blvd.	92324	\$145,500.00	3 BR, 1 BA	6/17/2014	http://www.zillow.com
Colton	SF Home	For Sale	456 W. D St.	92324	\$152,000.00	3 BR, 1 BA	6/17/2014	http://www.zillow.com
Colton	SF Home	For Sale	460 W. E St.	92324	\$213,000.00	3 BR, 2.5 BA	6/17/2014	http://www.zillow.com

I-10 Corridor Project
Relocation Impact Study: Available Relocation Resources

City/ Jurisdiction	Property Type	For Rent/For Sale/Lease	Address	Zip Code	Price	Size	Date Accessed	Database
Colton	SF Home	For Sale	894 W. G St.	92324	\$385,000.00	Studio	6/17/2014	http://www.zillow.com
Colton	SF Home	For Sale	943 W. C St.	92324	\$185,000.00	3 BR, 2 BA	6/17/2014	http://www.zillow.com
Pomona	Multi-Family	For Rent	1370 N. Gordon St., Apt. D	91768	\$1,150/mo	2 BR, 2 BA	7/8/2014	http://www.zillow.com
Pomona	Multi-Family	For Rent	451 Anderwood Ct., Apt. F	91768	\$875/mo	1 BR, 1 BA	7/9/2014	http://www.zillow.com
Pomona	Multi-Family	For Rent	1958 Annandale Way	91767	\$1,750/ mo	3 BR, 3.5 BA	7/8/2014	http://www.zillow.com
Pomona	Multi-Family	For Rent	1955 Annandale Way	91767	\$1,750/mo	3 BR, 3 BA	7/8/2014	http://www.zillow.com
Pomona	Multi-Family	For Rent	1969 Oakwood Way	91767	\$1,800/mo	3 BR, 2.5 BA	7/8/2014	http://www.zillow.com
Pomona	Multi-Family	For Rent	1520 Cobblestone Ln.	91767	\$1,850/mo	3 BR, 3 BA	7/8/2014	http://www.zillow.com
Pomona	Multi-Family	For Rent	1725 Benedict Way	91767	\$1,500/mo	2 BR, 2 BA	7/8/2014	http://www.zillow.com
Pomona	Multi-Family	For Rent	1751 Cordova St., Apt. 4	91767	\$925/mo	2 BR, 1 BA	7/8/2014	http://www.zillow.com
Pomona	Multi-Family	For Rent	1805 Cordova St., Apt. M	91767	\$850/mo	1 BR, 1 BA	7/8/2014	http://www.zillow.com
Pomona	Multi-Family	For Rent	1726 Benedict Way	91767	\$1,350/mo	2 BR, 2 BA	7/8/2014	http://www.zillow.com
Claremont	Multi-Family	For Rent	597 S. College Ave.	91711	\$1,700/mo	3 BR, 3 BA	7/8/2014	http://www.zillow.com
Claremont	Multi-Family	For Rent	369 Geneva Ave.	91711	\$2,250/mo	3 BR, 1.5 BA	7/8/2014	http://www.zillow.com
Claremont	Multi-Family	For Rent	364 Geneva Ave.	91711	\$2,250/mo	3 BR, 2 BA	7/8/2014	http://www.zillow.com
Claremont	Multi-Family	For Rent	516 S. Indian Hill Blvd.	91711	\$1,450/mo	2 BR, 2 BA	7/8/2014	http://www.zillow.com
Claremont	Multi-Family	For Rent	516 S. Indian Hill Blvd.	91711	\$1,250/mo	1 BR, 1 BA	7/8/2014	http://www.zillow.com
Claremont	Multi-Family	For Rent	516 S. Indian Hill Blvd.	91711	\$1,425/mo	2 BR, 1 BA	7/8/2014	http://www.zillow.com
Montclair	Multi-Family	For Rent	9550 Fremont Ave.	91763	\$1,395+/mo	1 BR, 1 BA	6/12/2014	http://www.zillow.com
Montclair	Multi-Family	For Sale	9362 Shadowood Dr. Apt G	91763	\$199,995.00	2 BR, 1 BA	6/12/2014	http://www.zillow.com
Montclair	Multi-Family	For Sale	9301 Shadowood Dr. Apt B	91763	\$189,000.00	3 BR, 3 BA	6/12/2014	http://www.zillow.com
Montclair	Multi-Family	For Rent	4622 San Jose St. Apt X	91763	\$1,600.00/mo	3 BR, 2 BA	6/12/2014	http://www.zillow.com
Montclair	Multi-Family	For Sale	4424 San Jose ST. Apt 13	91763	\$245,800.00	2 BR, 2 BA	6/12/2014	http://www.zillow.com
Montclair	Multi-Family	For Rent	9550 Fremont Ave.	91763	\$1,395+/m	2 BR, 1 BA	6/12/2014	http://www.zillow.com
Montclair	Multi-Family	For Rent	4396 Harvard St.	91763	\$1,425/mo	3 BR, 2 BA	7/8/2014	http://www.zillow.com
Montclair	Multi-Family	For Rent	4368 Benito St.	91763	\$1,695/mo	4 BR, 2 BA	7/8/2014	http://www.zillow.com
Upland	Multi-Family	For Rent	221 Grayson Way, Apt B	91786	\$1,100/mo	2 BR, 1 BA	7/9/2014	http://www.zillow.com
Upland	Multi-Family	For Rent	1300 Primrose St.	91786	\$1,250/mo	2 BR, 1 BA	7/9/2014	http://www.zillow.com

I-10 Corridor Project
Relocation Impact Study: Available Relocation Resources

City/ Jurisdiction	Property Type	For Rent/For Sale/Lease	Address	Zip Code	Price	Size	Date Accessed	Database
Upland	Multi-Family	For Rent	133 Linda Way, Apt. C	91786	\$1,050/mo	2 BR, 1.5 BA	7/9/2014	http://www.zillow.com
Upland	Multi-Family	For Rent	1040 W. 7th Street	91786	\$950/mo	1 BR, 1 BA	7/9/2014	http://www.zillow.com
Upland	Multi-Family	For Rent	1040 W. 7th Street	91786	\$1,205/mo	2 BR, 1 BA	7/9/2014	http://www.zillow.com
Upland	Multi-Family	For Rent	968 W. 7th Street, Apt. 40	91786	\$1,015/mo	1 BR, 1 BA	7/9/2014	http://www.zillow.com
Upland	Multi-Family	For Rent	481 E. 7th Street	91786	\$1,700/mo	3 BR, 1 BA	7/9/2014	http://www.zillow.com
Upland	Multi-Family	For Rent	256 Euclid Pl. #C	91786	\$995/mo	1 BR, 1 BA	7/9/2014	http://www.zillow.com
Upland	Multi-Family	For Rent	221 Grayson Way Apt. B	91786	\$1,100/mo	2 BR, 1 BA	6/12/2014	http://www.zillow.com
Upland	Multi-Family	For Rent	276 S. Benson Ave.	91786	\$1610+/mo	2 BR, 2 BA	6/12/2014	http://www.zillow.com
Upland	Multi-Family	For Rent	1265 E. 9th St.	91786	NA	1B 1BA	7/9/2014	http://www.apartments.com
Upland	Multi-Family	For Rent	1265 E. 9th St.	91786	NA	2B 2BA	7/9/2014	http://www.apartments.com
Upland	Multi-Family	For Rent	1265 E. 9th St.	91786	NA	3B 2BA	7/9/2014	http://www.apartments.com
Ontario	Multi-Family	For Rent	1405 N. Grove, Apt. C	91764	\$1,150/mo	2 BR, 1.5 BA	7/9/2014	http://www.zillow.com
Ontario	Multi-Family	For Rent	1211 N. El Dorado Ave.	91764	\$865/mo	1 BR, 1 BA	7/9/2014	http://www.zillow.com
Ontario	Multi-Family	For Rent	743 N. Lake Ave.	91764	\$1,850/mo	4 BR, 2 BA	7/9/2014	http://www.zillow.com
Ontario	Multi-Family	For Rent	437 N. Placer Privado	91764	\$1,850/mo	3 BR, 3 BA	7/9/2014	http://www.zillow.com
Ontario	Multi-Family	For Rent	416 N. Imperial Ave.	91764	\$1,195/mo	2 BR, 1 BA	7/9/2014	http://www.zillow.com
Ontario	Multi-Family	For Rent	714 E. Yale St.	91764	\$795/mo	1 BR, 1 BA (Studio)	7/9/2014	http://www.zillow.com
Ontario	Multi-Family	For Rent	2013 E. Yale St.	91764	\$1,450/mo	2 BR, 1.5 BA	7/9/2014	http://www.zillow.com
Ontario	Multi-Family	For Rent	1482 E. 7th St.	91764	\$2,195/mo	3 BR, 2 BA	7/9/2014	http://www.zillow.com
Ontario	Multi-Family	For Rent	2883 E. Via Terrano	91764	\$2,200/mo	3 BR, 3 BA	7/9/2014	http://www.zillow.com
Ontario	Multi-Family	For Rent	3131 Inland Empire Blvd., Apt. 4	91764	\$1,375/mo	3 BR, 1.5 BA	7/9/2014	http://www.zillow.com
Ontario	Multi-Family	For Rent	3231 Inland Empire Blvd., Apt. 2	91764	\$1,250/mo	2 BR, 1 BA	7/9/2014	http://www.zillow.com
Ontario	Multi-Family	For Rent	758 Corvette Dr., Apt. C	91764	\$1,290/mo	2 BR, 1.5 BA	7/9/2014	http://www.zillow.com
Ontario	Multi-Family	For Rent	731 N. Center Ave., Apt. 2	91764	\$1,100/mo	2 BR, 1 BA	7/9/2014	http://www.zillow.com
Ontario	Multi-Family	For Rent	850 N. Center Ave.	91764	\$1,085/mo	1 BR, 1 BA (Plan A)	7/9/2014	http://www.zillow.com
Ontario	Multi-Family	For Rent	850 N. Center Ave.	91764	\$1,010/mo	1 BR, 1 BA (Plan C)	7/9/2014	http://www.zillow.com
Ontario	Multi-Family	For Rent	850 N. Center Ave.	91764	\$1,335/mo	2 BR, 2 BA	7/9/2014	http://www.zillow.com
Ontario	Multi-Family	For Rent	1026 N. Turner Ave., Apt. 226	91764	\$1,675/mo	3 BR, 3 BA	7/9/2014	http://www.zillow.com
Ontario	Multi-Family	For Rent	1005 N. Center Ave.	91764	\$1,315/mo	1 BR, 1 BA	7/9/2014	http://www.zillow.com

I-10 Corridor Project
Relocation Impact Study: Available Relocation Resources

City/ Jurisdiction	Property Type	For Rent/For Sale/Lease	Address	Zip Code	Price	Size	Date Accessed	Database
Ontario	Multi-Family	For Rent	1005 N. Center Ave.	91764	\$1,925/mo	3 BR, 2 BA	7/9/2014	http://www.zillow.com
Ontario	Multi-Family	For Rent	1005 N. Center Ave.	91764	\$1,585/mo	2 BR, 2 BA	7/9/2014	http://www.zillow.com
Ontario	Multi-Family	For Rent	955 N. Duesenberg Dr.	91764	\$1,275/mo	1 BR, 1 BA	7/9/2014	http://www.zillow.com
Ontario	Multi-Family	For Rent	955 N. Duesenberg Dr.	91764	\$1,650/mo	2 BR, 2 BA	7/9/2014	http://www.zillow.com
Ontario	Multi-Family	For Rent	955 N. Duesenberg Dr.	91764	\$1,350/mo	1 BR, 1 BA	7/9/2014	http://www.zillow.com
Ontario	Multi-Family	For Rent	950 N. Duesenberg Dr.	91764	\$1,259/mo	1 BR, 1 BA	7/9/2014	http://www.zillow.com
Ontario	Multi-Family	For Rent	950 N. Duesenberg Dr.	91764	\$1,629/mo	2 BR, 2 BA	7/9/2014	http://www.zillow.com
Ontario	Multi-Family	For Rent	950 N. Duesenberg Dr.	91764	\$1,549/mo	2 BR, 2 BA	7/9/2014	http://www.zillow.com
Ontario	Multi-Family	For Rent	950 N. Duesenberg Dr.	91764	\$1,319/mo	2 BR, 2 BA	7/9/2014	http://www.zillow.com
Ontario	Multi-Family	For Rent	950 N. Duesenberg Dr.	91764	\$1,569/mo	2 BR, 2 BA	7/9/2014	http://www.zillow.com
Ontario	Multi-Family	For Rent	950 N. Duesenberg Dr.	91764	\$1,239/mo	1 BR, 1 BA	7/9/2014	http://www.zillow.com
Ontario	Multi-Family	For Rent	950 N. Duesenberg Dr.	91764	\$1,309/mo	1 BR, 1 BA	7/9/2014	http://www.zillow.com
Ontario	Multi-Family	For Rent	E 5th St.	91764	\$850/mo	1 BR, 1 BA	7/9/2014	http://www.zillow.com
Ontario	Multi-Family	For Rent	1520 N. Mountain Ave.	91762	\$1,385/mo	Studio	6/12/2014	http://www.zillow.com
Ontario	Multi-Family	For Rent	154 N. Palmetto	91762	\$750/mo	1B 1BA	7/9/2014	http://www.apartments.com
Ontario	Multi-Family	For Rent	154 N. Palmetto	91762	\$1195/mo	3B 2BA	7/9/2014	http://www.apartments.com
Fontana	Multi-Family	For Rent	17010 Marygold Ave.	92335	\$995/mo	1B 1BA	7/9/2014	http://www.zillow.com
Fontana	Multi-Family	For Rent	8600 Citrus Ave.	92335	\$1135/mo	2B 2BA	7/9/2014	http://www.apartments.com
Fontana	Multi-Family	For Rent	8600 Citrus Ave.	92335	\$875/mo	1B 1BA	7/9/2014	http://www.apartments.com
Fontana	Multi-Family	For Rent	8555 Citrus Ave.	92335	\$845/mo	1B 1BA	7/9/2014	http://www.apartments.com
Fontana	Multi-Family	For Rent	8555 Citrus Ave.	92335	\$1100/mo	2B 1.5BA	7/9/2014	http://www.apartments.com
Fontana	Multi-Family	For Rent	8555 Citrus Ave.	92335	\$1405/mo	3B 2BA	7/9/2014	http://www.apartments.com
Fontana	Multi-Family	For Rent	8185 Palmetto Ave.	92335	\$715/mo	1B 1BA	7/9/2014	http://www.apartments.com
Fontana	Multi-Family	For Rent	8185 Palmetto Ave.	92335	\$895/mo	2B 2BA	7/9/2014	http://www.apartments.com
Rialto	Multi-Family	For Rent	160 N. Lindon Ave.	92376	\$770/mo	1B 1BA	7/9/2014	http://www.apartments.com
Rialto	Multi-Family	For Rent	160 N. Lindon Ave.	92376	\$1025/mo	2B 2BA	7/9/2014	http://www.apartments.com
Rialto	Multi-Family	For Rent	380 Linden Ave.	92376	\$752/mo	Studio	7/9/2014	http://www.apartments.com
Rialto	Multi-Family	For Rent	380 Linden Ave.	92376	\$814/mo	1B 1BA	7/9/2014	http://www.apartments.com
Rialto	Multi-Family	For Rent	380 Linden Ave.	92376	\$1260/mo	2B 2 BA	7/9/2014	http://www.apartments.com
Rialto	Multi-Family	For Rent	380 Linden Ave.	92376	\$1230/mo	3B 2BA	7/9/2014	http://www.apartments.com
Colton	Multi-Family	For Rent	2069 San Bernardino Ave.	92324	\$699/mo	1B 1BA	7/9/2014	http://www.apartments.com
Colton	Multi-Family	For Rent	2069 San Bernardino Ave.	92324	\$899/mo	2B 2BA	7/9/2014	http://www.apartments.com

I-10 Corridor Project
Relocation Impact Study: Available Relocation Resources

City/ Jurisdiction	Property Type	For Rent/For Sale/Lease	Address	Zip Code	Price	Size	Date Accessed	Database
Colton	Multi-Family	For Rent	580 W. E St. Apt. 6	92324	\$545/mo	Studio	6/17/2014	http://www.zillow.com
Loma Linda	Multi-Family	For Rent	10668 Ohio St.	92354	\$875/mo	2 BR, 1 BA	7/9/2014	http://www.zillow.com
Ontario	Multi-Family	For Rent	605 N. Grove Ave.	91764	\$1,300/mo	3 BR, 2 BA	7/9/2014	http://www.zillow.com
Ontario	Multi-Family	For Rent	2882 E. Via Terrano	91764	\$2,300/mo	4 BR, 2 BA	7/9/2014	http://www.zillow.com
Ontario	Multi-Family	For Rent	1005 N. Center Ave.	91764	\$1,220/mo	1 BR, 1 BA	7/9/2014	http://www.zillow.com
Ontario	Multi-Family	For Rent	1005 N. Center Ave.	91764	\$1,530/mo	2 BR, 2 BA	7/9/2014	http://www.zillow.com
Montclair	Office	For Lease	9625 Monte Vista Ave.	91763	\$15.60/SF/Year	2,615 SF	6/12/2014	http://www.loopnet.com
Montclair	Office	For Rent	9625 Monte Vista Ave.	91763	\$15.60/SF/Year	42,392 SF	6/12/2014	http://www.loopnet.com
Ontario	Office	For Rent	1520 No. Mountain Ave.	91762	21.60/SF/Year	29,225 SF	6/12/2014	http://www.loopnet.com
Ontario	Office	For Rent	1131 W. 6th Street	91762	\$21/SF/Year	1,906 SF	6/12/2014	http://www.loopnet.com
Colton	Office	For Lease	1461 E. Cooley Dr.	92324	NA	39,744 SF	6/17/2014	http://www.loopnet.com
Colton	Office	For Rent	128 E. "G" St.	92324	\$6/SF/Year	8,610 SF	6/17/2014	http://www.loopnet.com
Colton	Office	For Rent	582 W. Valley Blvd.	92324	\$8.81-12.86/SF/Year	10,762 SF	6/17/2014	http://www.loopnet.com
Colton	Office	For Sale	404 N. 7th St.	92324	\$850,000.00	10,251 SF	6/17/2014	http://www.loopnet.com
Colton	Office	For Sale	582 W. Valley Blvd.	92324	\$539,000.00	9,928 SF	6/17/2014	http://www.loopnet.com
Montclair	Industrial	For Sale	5398 Arrow Highway	91763	NA	98,508 SF	6/12/2014	http://www.loopnet.com
Montclair	Industrial	For Rent	8900 Benson Ave.	91763	\$6.72-12.82/SF/Year	88,016 SF	6/12/2014	http://www.loopnet.com
Montclair	Industrial	For Rent	5640 Arrow Hwy.	91763	\$7.80/SF/Year	41,220 SF	6/12/2014	http://www.loopnet.com
Montclair	Industrial	For Rent	5482 Arrow Hwy.	91763	\$7.80/SF/Year	12,400 SF	6/12/2014	http://www.loopnet.com
Montclair	Industrial	For Rent	8880 Benson Ave.	91763	\$9-10.20/SF/Year	28,287 SF	6/12/2014	http://www.loopnet.com
Montclair	Industrial	For Rent	4867 E. Arrow Hwy.	91763	\$6.60/SF/Year	16,562 SF	6/12/2014	http://www.loopnet.com
Upland	Industrial	For Rent	290 Benson Ave.	91786	\$8.16-10.32/SF/Year	20,000 SF	6/12/2014	http://www.loopnet.com
Fontana	Industrial	For Sale	14512 Alliso Dr.	92337	\$1,309,744.00	1.88 Acres	6/16/2014	http://www.loopnet.com
Fontana	Industrial	For Sale	10640 Redwood Ave.	92337	\$500,000.00	.64 Acre	6/16/2014	http://www.loopnet.com
Fontana	Industrial	For Sale	10640 Redwood Ave.	92337	\$525,000.00	3,000 SF	6/16/2014	http://www.loopnet.com
Fontana	Industrial	For Sale	15151-15173 Boyle Ave.	92337	\$890,000.00	8,100 SF	6/16/2014	http://www.loopnet.com
Fontana	Industrial	For Sale	15149 Boyle Ave.	92337	\$420,000.00	4,000 SF	6/16/2014	http://www.loopnet.com
Fontana	Industrial	For Sale	10221 Redwood Ave.	92335	\$1,373,751.00	2.87 Acres	6/16/2014	http://www.loopnet.com
Fontana	Industrial	For Sale	15252 Valley Blvd.	92335	\$6,847,632.00	13.10 Acres	6/16/2014	http://www.loopnet.com
Fontana	Industrial	For Sale	14576 Hunter St.	92335	\$225,000.00	.42 Acre	6/16/2014	http://www.loopnet.com
Bloomington	Industrial	For Rent	2273 S. Vista Ave.	92316	\$6.60/SF/Year	18,146 SF	6/17/2014	http://www.loopnet.com
Rialto	Industrial	For Sale	311 W. Valley Blvd	92376	\$1,350,000.00	25,680 SF	6/17/2014	http://www.loopnet.com
Colton	Industrial	For Rent	671 E. Cooley Dr.	92324	\$6.60-7.28/SF/Year	62,554 SF	6/17/2014	http://www.loopnet.com

I-10 Corridor Project
Relocation Impact Study: Available Relocation Resources

City/ Jurisdiction	Property Type	For Rent/For Sale/Lease	Address	Zip Code	Price	Size	Date Accessed	Database
Colton	Industrial	For Rent	691 E. Valley Blvd.	92324	\$8.03/SF/Year	3,200 SF	6/17/2014	http://www.loopnet.com
Colton	Industrial	For Rent	327 W. E Street	92324	\$7.16/SF/Year	7,500 SF	6/17/2014	http://www.loopnet.com
Colton	Industrial	For Sale	1610 Fairway	92324	\$1,900,000.00	10,500 SF	6/17/2014	http://www.loopnet.com
Colton	Industrial	For Sale	333-345 W. Valley Blvd.	92324	\$649,900.00	9,840 SF	6/17/2014	http://www.loopnet.com
Colton	Industrial	For Sale	590 W. Maple Ct.	92324	\$175,000.00	1,924 SF	6/17/2014	http://www.loopnet.com
Montclair	Commercial	For Lease	9303-9407 Central Ave.	91763	NA	19,950 SF	6/12/2014	http://www.loopnet.com
Montclair	Commercial	For Lease	9509 Central Ave.	91763	\$12/SF/Year	6,582 SF	6/12/2014	http://www.loopnet.com
Montclair	Commercial	For Lease	9666 Central Ave.	91763	\$12/SF/Year	20,431 SF	6/12/2014	http://www.loopnet.com
Montclair	Commercial	For Sale	9345 Monte Vista Ave.	91763	\$3,200,000.00	6,233 SF	6/12/2014	http://www.loopnet.com
Montclair	Commercial	For Sale	5440 Moreno Street	91763	\$1,925,000.00	11,340 SF	6/12/2014	http://www.loopnet.com
Montclair	Commercial	For Sale	5483 Moreno Street	91763	\$4,200,000.00	28,000 SF	6/12/2014	http://www.loopnet.com
Montclair	Commercial	For Sale	9345 Monte Vista Ave	91763	\$3,200,000.00	6,233 SF	6/12/2014	http://www.loopnet.com
Montclair	Commercial	For Rent	9024 Benson	91763	\$5.70-12/SF/Year	15,000 SF	6/12/2014	http://www.loopnet.com
Montclair	Commercial	For Rent	5436 Arrow Hwy.	91763	NA	16,982 SF	6/12/2014	http://www.loopnet.com
Montclair	Commercial	For Rent	5405 Arrow Hwy.	91763	\$9.48/SF/Year	50,000 SF	6/12/2014	http://www.loopnet.com
Montclair	Commercial	For Rent	5454-5472 Moreno St.	91763	\$9/SF/Year	27,257 SF	6/12/2014	http://www.loopnet.com
Montclair	Commercial	For Rent	5483 Moreno Street	91763	\$12/SF/Year	10,000-28,000 SF	6/12/2014	http://www.loopnet.com
Montclair	Commercial	For Rent	8801-8891 Central Ave	91763	\$13.20-18/SF/Year	50,971 SF	6/12/2014	http://www.loopnet.com
Montclair	Commercial	For Rent	5459 Moreno St	91763	NA	1,134-41,200 SF	6/12/2014	http://www.loopnet.com
Montclair	Commercial	For Rent	9041 Central Ave.	91763	\$2.28/SF/Year	19,054 SF	6/12/2014	http://www.loopnet.com
Montclair	Commercial	For Rent	8760 Central Ave.	91763	\$12/SF/Year	12,125 SF	6/12/2014	http://www.loopnet.com
Montclair	Commercial	For Rent	9303-9407 Central Ave.	91763	NA	1,200-12,000 SF	6/12/2014	http://www.loopnet.com
Montclair	Commercial	For Rent	9509 Central Ave	91763	\$12/SF/Year	1,340 SF	6/12/2014	http://www.loopnet.com
Upland	Commercial	For Rent	233-373 S. Mountain Ave.	91786	NA	1,200-4,033 SF	6/12/2014	http://www.loopnet.com
Upland	Commercial	For Rent	1348-1438 W. 7th Street	91786	\$13.20/SF/Year	116,029 SF	6/12/2014	http://www.loopnet.com
Ontario	Commercial	For Sale	1333 N Mountain Ave.	91762	\$1,900,000.00	1.04 Acres	6/12/2014	http://www.loopnet.com
Ontario	Commercial	For Rent	1515 N. Mountain Ave.	91762	NA	1,997 SF	6/12/2014	http://www.loopnet.com
Ontario	Commercial	For Rent	1117-1127 N. Mountain	91762	\$15/SF/Year	14,000 SF	6/12/2014	http://www.loopnet.com
Rialto	Commercial	For Rent	SWC San Bernardino Ave.	92376	NA	1,000- 6.718 SF	6/17/2014	http://www.loopnet.com
Colton	Commercial	For Sale	2900 W. Valley	92324	\$6,900,000.00	65,925 SF	6/17/2014	http://www.loopnet.com
Colton	Commercial	For Rent	201 E. Valley Blvd.	92324	\$15-18/SF/Year	7,184 SF	6/17/2014	http://www.loopnet.com
Colton	Commercial	For Rent	415 W. Valley Blvd.	92324	\$10.08-13.64/SF/Year	12,611 SF	6/17/2014	http://www.loopnet.com

I-10 Corridor Project
Relocation Impact Study: Available Relocation Resources

City/ Jurisdiction	Property Type	For Rent/For Sale/Lease	Address	Zip Code	Price	Size	Date Accessed	Database
Colton	Commercial	For Sale	602 N. Mt. Vernon Ave.	92324	\$395,000.00	1,477 SF	6/17/2014	http://www.loopnet.com
Colton	Commercial	For Sale	202 E. Valley Blvd.	92324	\$2,176,000.00	2,321 SF	6/17/2014	http://www.loopnet.com
Colton	Commercial	For Sale	592 N. La Cadena Ave.	92324	\$1,500,000.00	6,350 SF	6/17/2014	http://www.loopnet.com
Colton	Commercial	For Sale	455-495 W. Valley Blvd.	92324	\$535,000.00	5,100 SF	6/17/2014	http://www.loopnet.com
Upland	Other	For Rent	250 S. Mountain Ave	91786	\$15-21.60/SF/Year	217,867 SF	6/12/2014	http://www.loopnet.com
Ontario	Other	For Sale	6th Street	91764	\$705,800.00	.71 Acre	6/12/2014	http://www.zillow.com
Fontana	Other	For Sale	10407 Elm Ave.	92337	\$775,000.00	2.5 Acres	6/16/2014	http://www.zillow.com
Colton	Other	For Sale	0 M St.	92324	\$275,000.00	.69 Acres	6/17/2014	http://www.loopnet.com
Colton	Other	For Sale	1650 Fairway Dr.	92324	\$286,952.00-\$299,911.00	1.55-1.62 Acres	6/17/2014	http://www.loopnet.com
Colton	Other	For Sale	817 Fairway Dr.	92324	\$890,000.00	1.93 Acres	6/17/2014	http://www.zillow.com
Colton	Other	For Sale	590 N. Mt. Vernon Ave.	92324	\$69,900.00	9,147 SF	6/17/2014	http://www.zillow.com
Colton	Other	For Sale	Barton Dr.	92324	\$150,000.00	9,060 SF	6/17/2014	http://www.zillow.com
Colton	Other	For Sale	145 E. G St.	92324	\$130,000.00	.30 Acres	6/17/2014	http://www.zillow.com
Colton	Other	For Sale	NA	92324	\$2,600,000.00	NA	6/17/2014	http://www.zillow.com

TOTAL RELOCATION RESOURCES			
	For Sale	For Lease	For Rent
Commercial	10	3	18
Industrial	13	0	10
Office	2	0	5
SF Home	0	0	0
Multi-Family	3	0	90
Other	9	0	1