

WELCOME

TO THE OPEN HOUSE FOR THE

LILAC TO RANCHO DOUBLE TRACK PROJECT



PLAN. BUILD. MOVE.



METROLINK®



cta

San Bernardino County
Transportation Authority

www.gosbcta.com



@goSBCTA

LILAC TO RANCHO
DOUBLE TRACK PROJECT

ABOUT THE AGENCY



PLAN. BUILD. MOVE.



METROLINK®



cta

San Bernardino County
Transportation Authority

www.gosbcta.com



@goSBCTA



PLAN. BUILD. MOVE.

DOUBLE TRACK DOES NOT MEAN DOUBLE TRAINS

IT MEANS SAFETY, SERVICE, AND
QUALITY IMPROVEMENTS



METROLINK®



cta

San Bernardino County
Transportation Authority

www.gosbcta.com



@goSBCTA



cta

San Bernardino County
Transportation Authority



METROLINK



PLAN. BUILD. MOVE. | www.gosbcta.com

LILAC TO RANCHO DOUBLE TRACK PROJECT

The San Bernardino County Transportation Authority (SBCTA), in conjunction with the Southern California Regional Rail Authority (SCRRA), has initiated a study to add a 3 mile second mainline track from Lilac Ave. in Rialto to Rancho Ave. in San Bernardino.

IMPROVE SAFETY & ACCESSIBILITY FOR ALL

- Enhance safety with double tracking
- Reduce the risk of train accidents and prevent pedestrian, car, truck, and train collisions
- Lengthen the existing platform at Rialto Station

IMPROVE METROLINK SERVICE FOR PASSENGERS

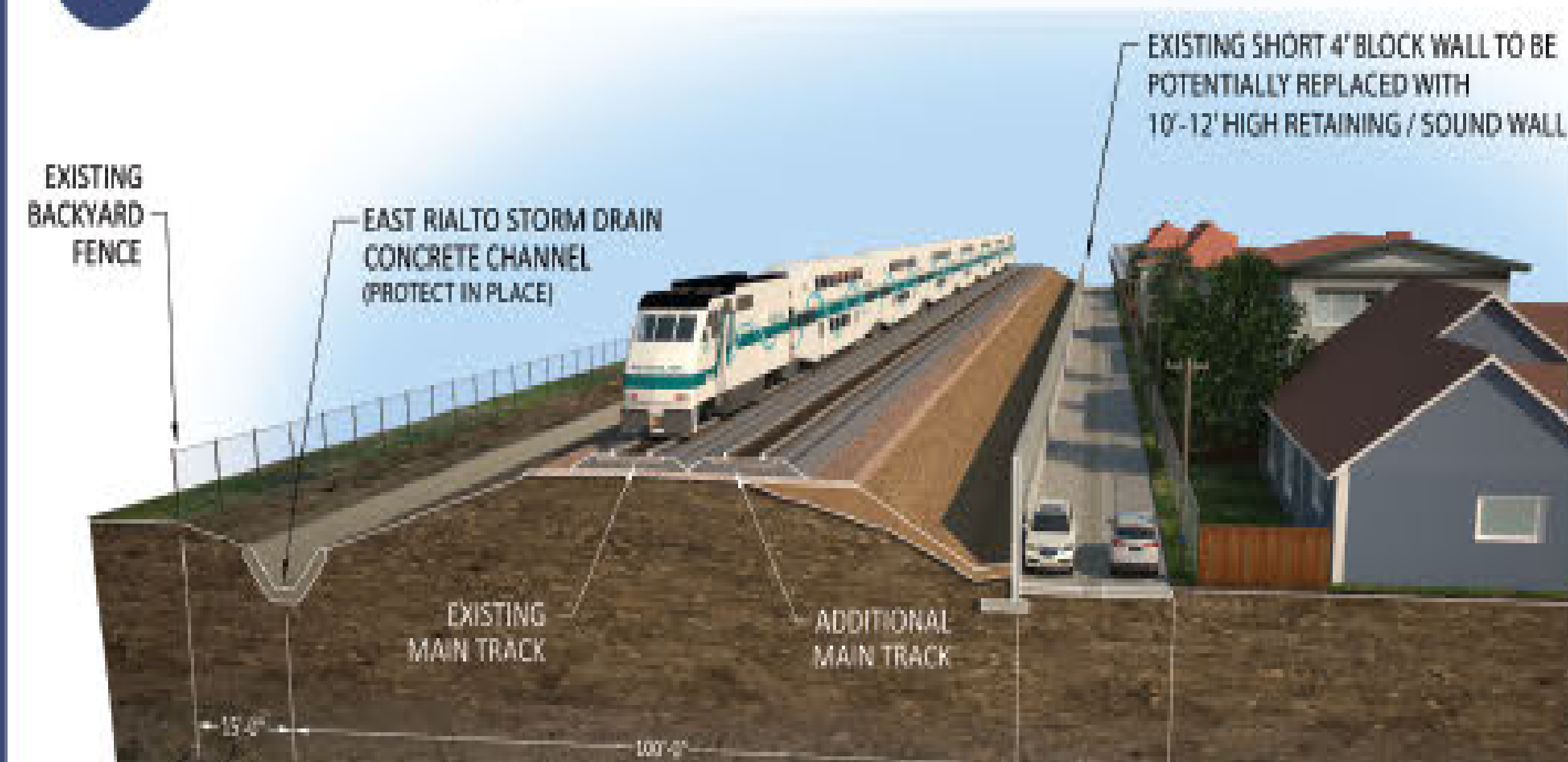
- Improve travel times
- Greater ability to add future service (subject to demand and funding)
- Reduce delays due to trains waiting for another train to pass
- Improve reliability and efficiency for Metrolink riders

IMPROVE QUALITY OF LIFE FOR COMMUNITIES

- SBCTA will design the 10 grade crossings to be “Quiet Zone Ready.” A Quiet Zone is a stretch of rail track where the Federal Railroad Administration (FRA) does not require trains to sound their horn at rail crossings, unless the train engineer sees an unsafe condition.



1 Potential Mitigation



2 Grade crossings



3 Metrolink Rialto Station

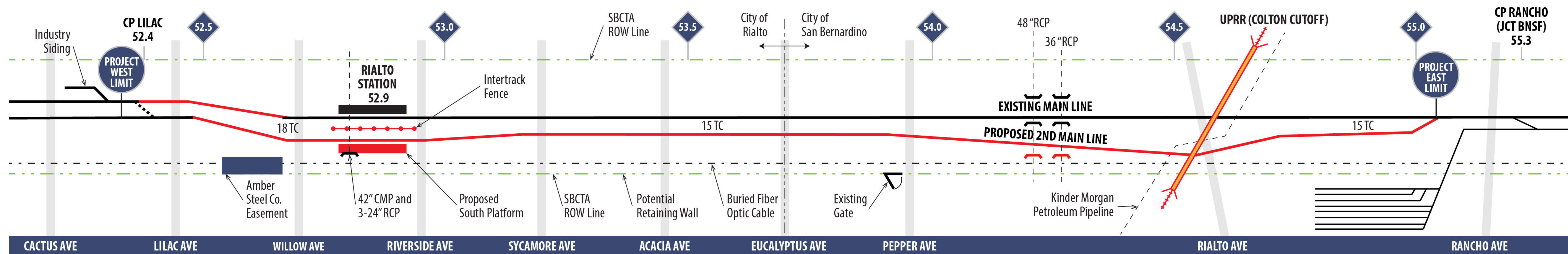
4 Drainage culverts



5 UPRR bridge overpass



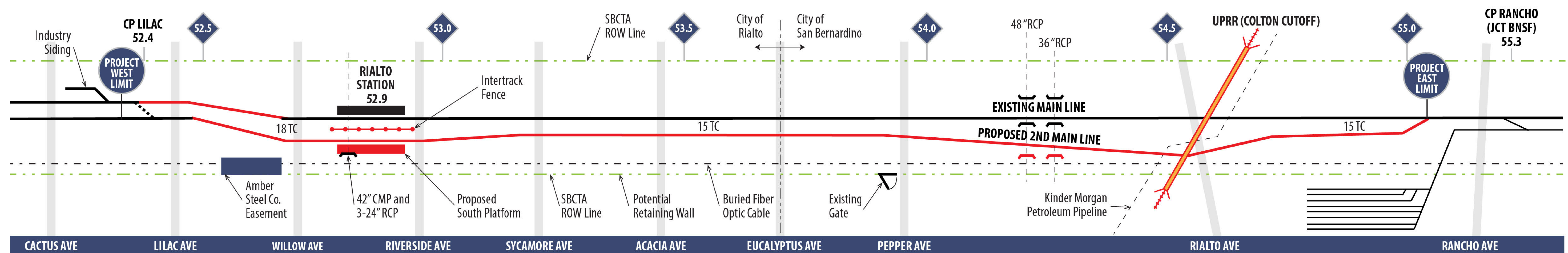
LILAC TO RANCHO DOUBLE TRACK PROJECT



Plan. Build. Move.

ENVIRONMENTAL ANALYSIS

Key Study Areas: Visual, Noise/Vibration, Traffic

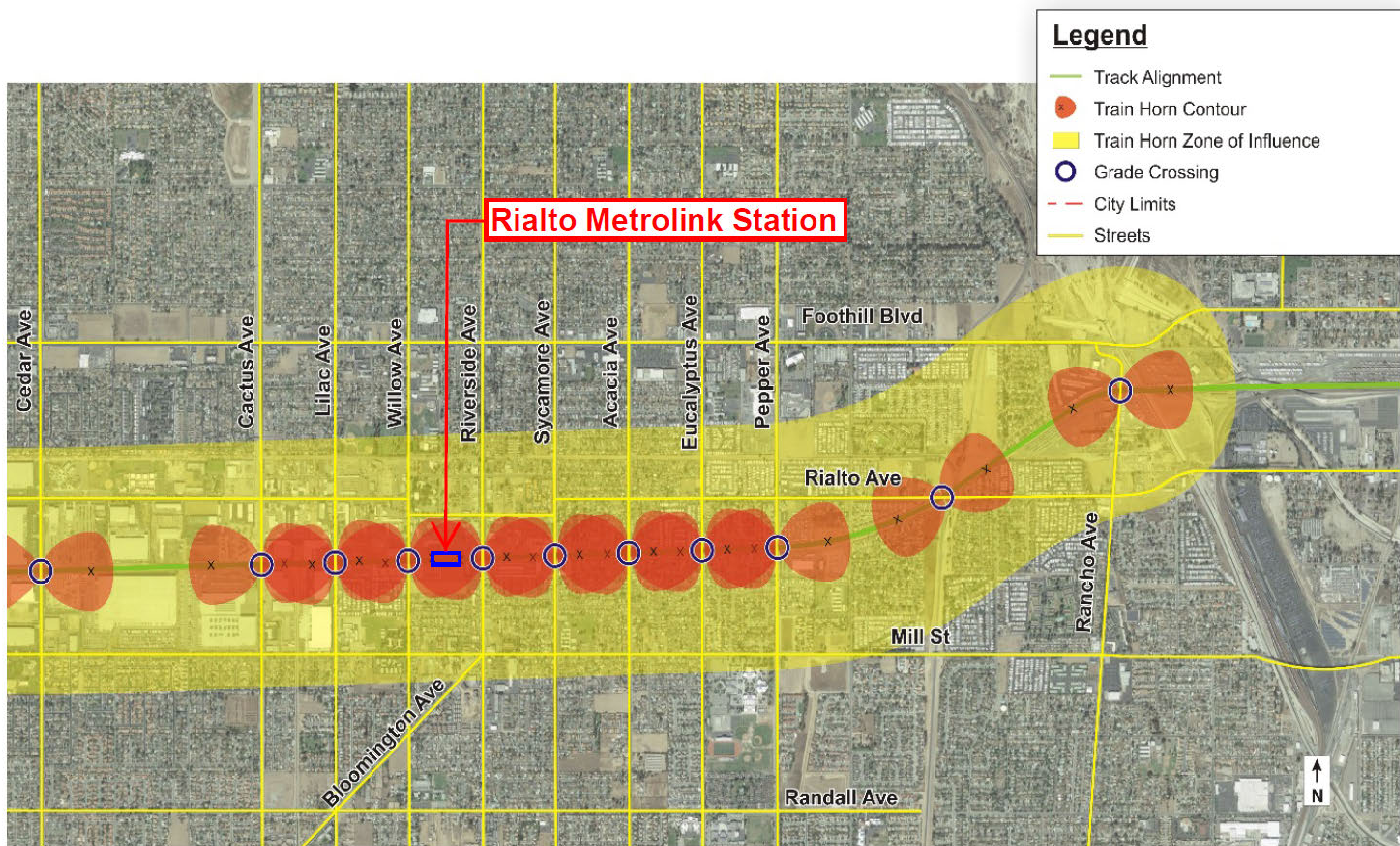


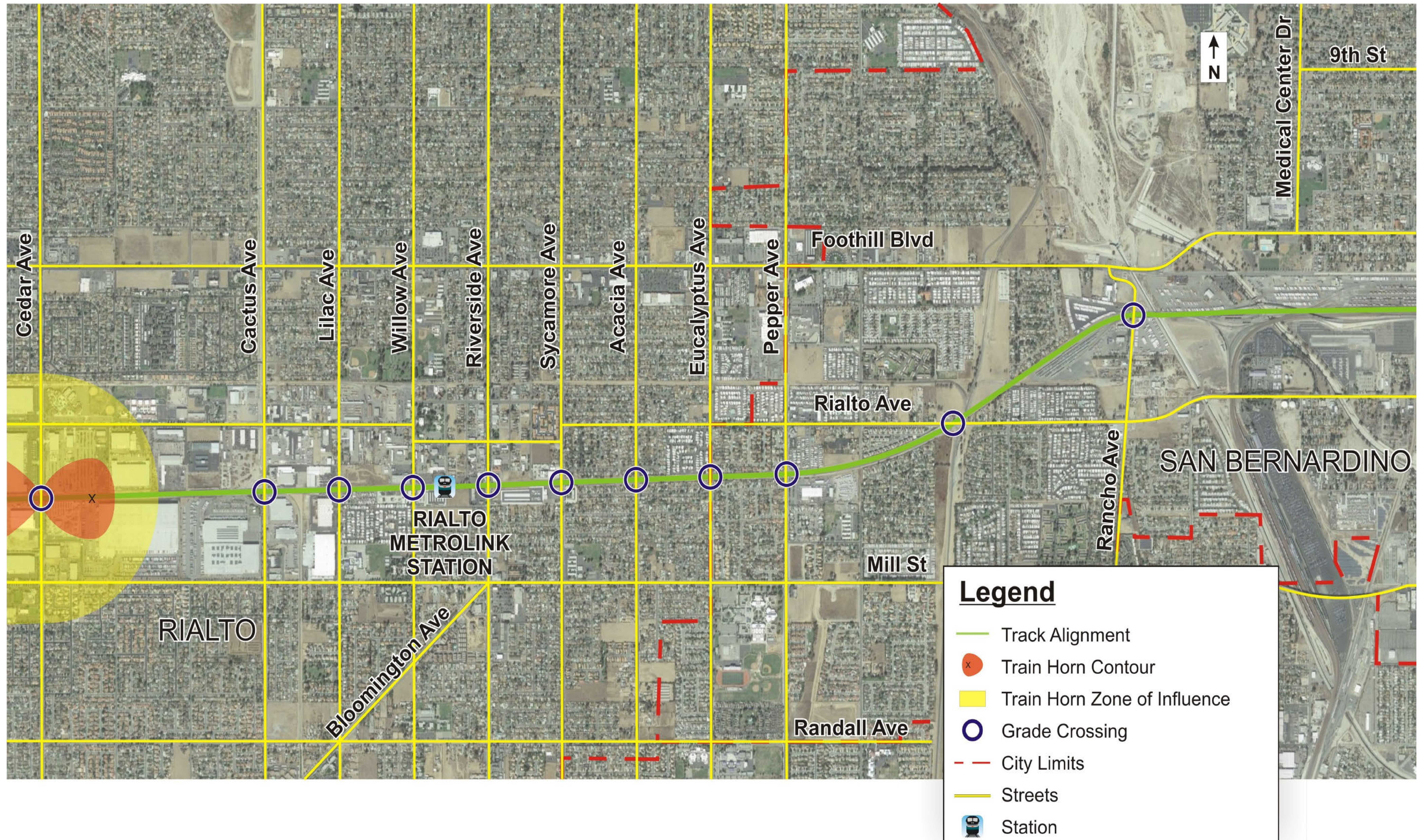
RIALTO STATION
PEDESTRIAN UNDERPASS SECTION VIEW



RIALTO STATION
PEDESTRIAN OVERPASS VIEW FROM PARKING LOT

- Biology
- Cultural
- Visual
- Water Quality
- Air Quality
- Traffic
- Noise & Vibration
- Hazardous Materials
- Paleontology





Quiet Zone Horn Contour Map



RIALTO STATION
PEDESTRIAN UNDERPASS AERIAL VIEW



RIALTO STATION
PEDESTRIAN UNDERPASS SECTION VIEW



RIALTO STATION
PEDESTRIAN OVERPASS VIEW FROM PARKING LOT



RIALTO STATION
PEDESTRIAN OVERPASS VIEW LOOKING EAST