



LYTLE CREEK VIRTUAL OPEN HOUSE

Thank you for joining us.

*The presentation will
begin at 6:40 p.m.*



San Bernardino
Council of Governments

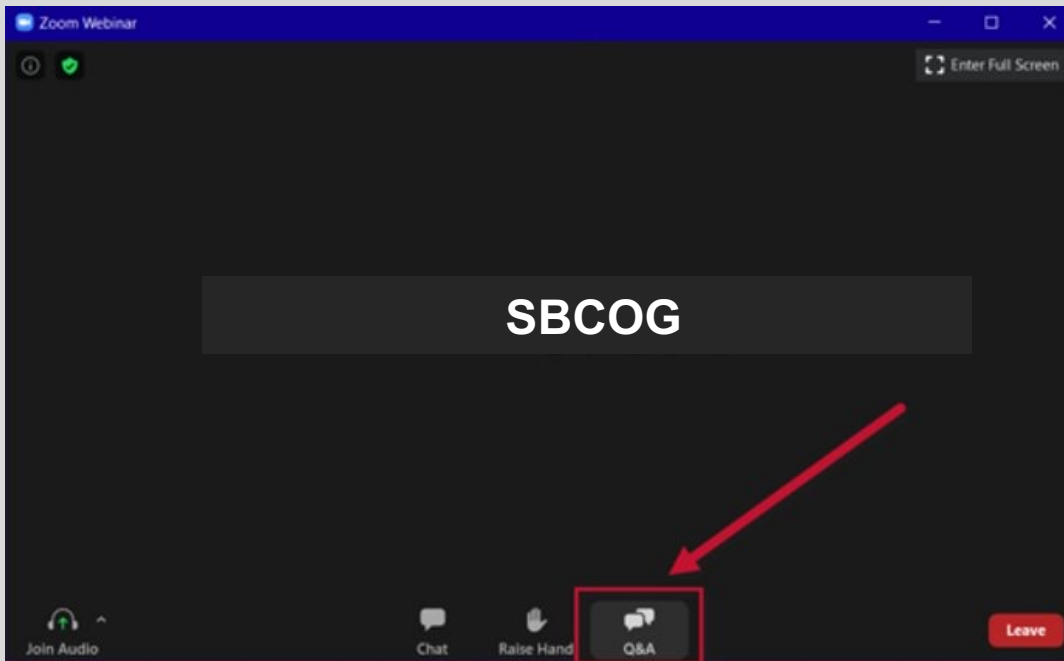


WELCOME

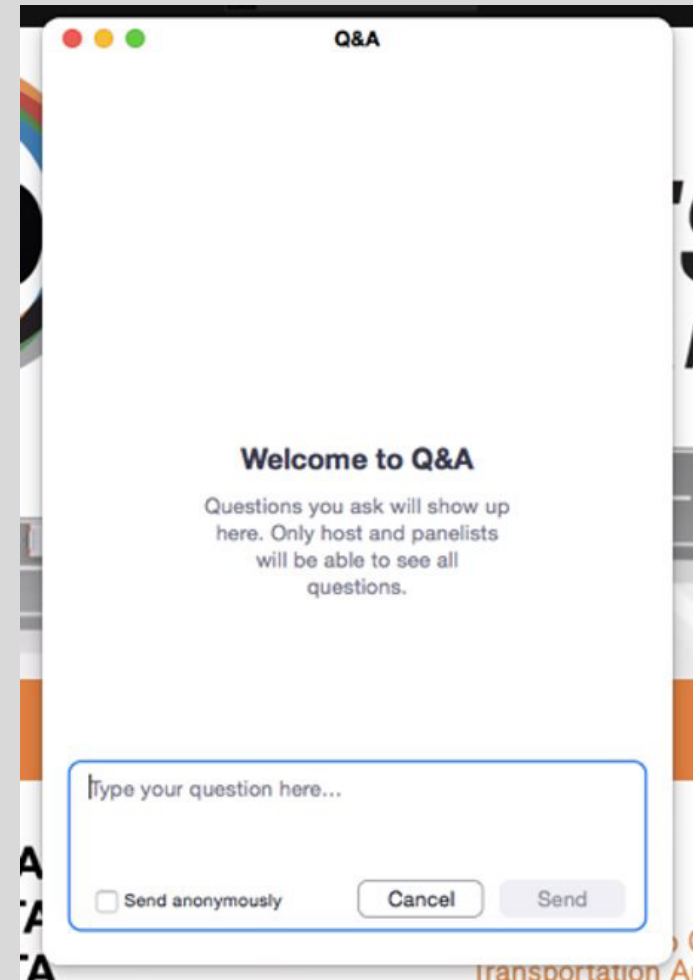
- This meeting is being recorded
- Spanish interpretation available
- All participants are muted and cameras are off
- Opportunity for Q&A following the presentation
- Use Q&A box to ask a question
- Visit goSBCTA.com/LytleCreek to review the information covered in tonight's presentation
- We'll use polls to learn more about our audience



HOW DO I ASK A QUESTION?



If you are joining us via the call-in option, please email questions to info@goSBCTA.com.



MARISA TRAUTZ
SBCOG

Visit goSBCTA.com/LytleCreek
to view the documents
discussed during the
presentation.



San Bernardino
Council of Governments



**Questions/Comments
following tonight's
presentation?**

**Email info@gosbcta.com or
call (877) 55-SBCTA.**



**San Bernardino
Council of Governments**



LYTLE CREEK RECREATION AREA VIRTUAL OPEN HOUSE

**Wednesday,
May 26
6:30-7:30 p.m.
via Zoom**

**CLICK
HERE**



to Register
or visit: [bit.ly/
LytleCreekOpenHouse](https://bit.ly/LytleCreekOpenHouse)

For questions
or more information,
please contact
Marisa Trautz at
mtrautz@gosbcta.com
or call
(877) 55-SBCTA.



Plan. Build. Move.

Visit goSBCTA.com/LytleCreek
to view the plans.



MONIQUE REZA-ARELLANO
SBCOG

POLL THE AUDIENCE

QUESTIONS 1 & 2



San Bernardino
Council of Governments



RECREATION MANAGEMENT PLAN DEVELOPMENT

- The “Lytle Creek Canyon Recreation Area Management Plan” [was developed] to provide strategic direction and guidance to improve recreation opportunities within the Lytle Creek Recreation Area and to protect the natural and cultural resources of the canyon.
- The plan provides a framework for informed decision making, while guiding resource management, practices, uses, and projects.



Visit goSBCTA.com/LytleCreek
to view the plans.



JOE RECHSTEINER
USDA FOREST SERVICE

GOALS OF RECREATION MANAGEMENT PLAN

- I. Improve the variety, quality and quantity of sustainable recreation opportunities in the Lytle Creek Canyon Recreation Area.
- II. Improve public communication, information, education, and engagement.
- III. Maintain, protect and enhance the natural resources.
- IV. Improve public health and safety



JOE RECHSTEINER
USDA FOREST SERVICE

COMPLETED WORK

- This planning effort started several years ago with our partners: San Bernardino Council of Governments (funded the plan), San Bernardino County Public Works, Law Enforcement Partners (Sheriff, CHP, FS).
- Contracted work with FS Enterprise team to develop recreation management plan and conceptual site design. Enterprise team held a project specific workshop with several Lytle Creek residents, San Bernardino County Public Works, San Bernardino Council of Governments and local Forest Service employees.

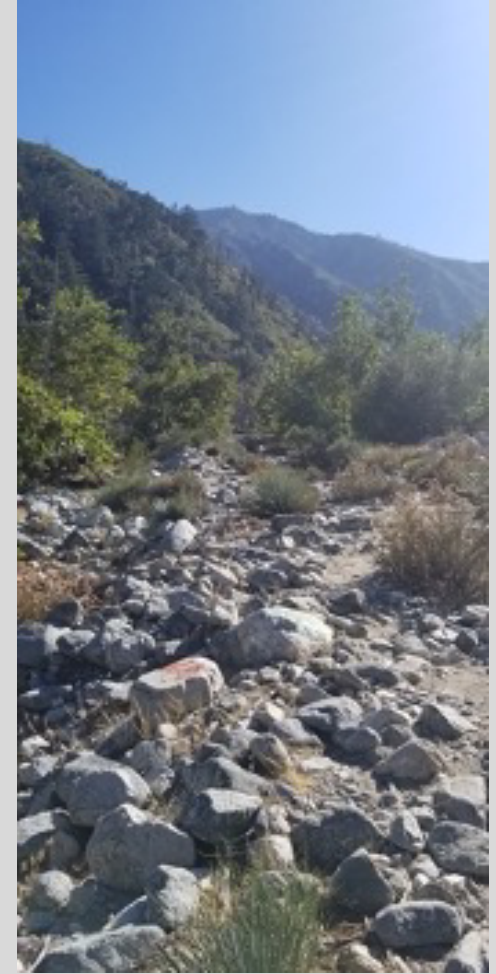
Visit goSBCTA.com/LytleCreek
to view the plans.



JOE RECHSTEINER
USDA FOREST SERVICE

ONGOING WORK

- Enterprise team is planning to finish design work and layout early fall 2021.
- Currently conducting this public meeting to engage the public with our plans.
- Environmental review will start Fall 2021. We'll continue working with County Public Works.



JOE RECHSTEINER
USDA FOREST SERVICE

POLL THE AUDIENCE

QUESTIONS 3 & 4



San Bernardino
Council of Governments





Public Works

Lytle Creek - Open House
May 26, 2021



Brendon Biggs, Director

www.SBCounty.gov

TRAFFIC MANAGEMENT PLAN PROJECT GOALS



- Continue traffic counting in 2021.
- Determine current parking capacity on road and parking lots.
- Establish traffic volume triggers based on traffic volume and parking space availability (summer 2021).
- Complete evaluation of roadside parking restriction locations.
- Purchase permanent real time traffic volume devices (FY 22/23).
- Purchase electronic message boards to alert visitors when parking areas are full (FY 22/23).
- Reduce duplicate signage.

2020 MITIGATION MEASURES

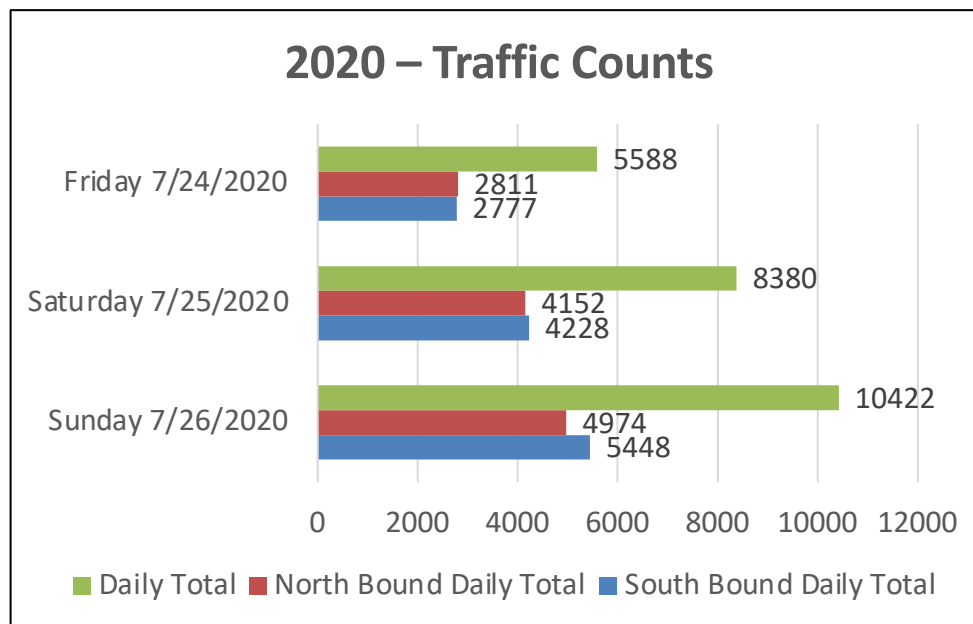
- County Department of Public Works (DPW) added temporary “no parking” signs to Bonita Falls parking area and along the road between Bonita Falls and Hidden Acres, and also along Long Bridge.
- DPW added an extra electronic sign at the mouth of Lytle Creek that stated “TRAFFIC CONGESTION, OVER TWO HOUR DELAY.”
- Electronic signs displaying fireworks are illegal in County areas were also placed. These measures helped reduce traffic impacts.
- Press releases were used by the USFS for the 4th of July weekend and posted the information on social media.
- For the 4th of July DPW installed:
 - 33 sticks of K-rail
 - 55 Type I barricades with temporary PARKING signs
 - 2 Changeable message boards



2020 MITIGATION MEASURES

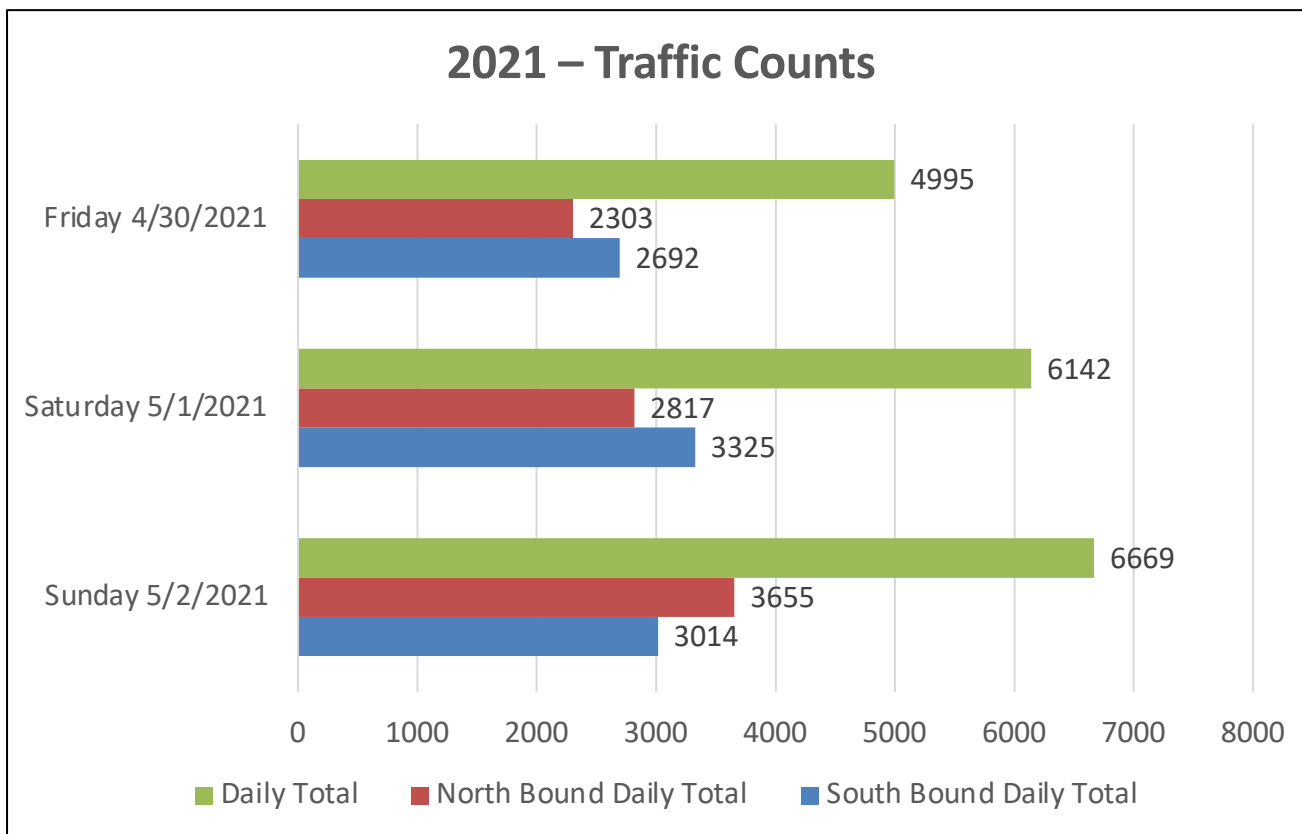


2020 Mitigation Measures – Traffic Counts



Previous Average Daily Traffic (ADT) at the same location prior to 2020 was 2,442. Per the chart above the busiest day was a Sunday with an ADT of 10,422, this is an increase of approximately 425% during a summer weekend peak. The heaviest traveled hours are on Sunday afternoon in the southbound direction with a traffic volume of 4,403 vehicles leaving the Lytle Creek area.

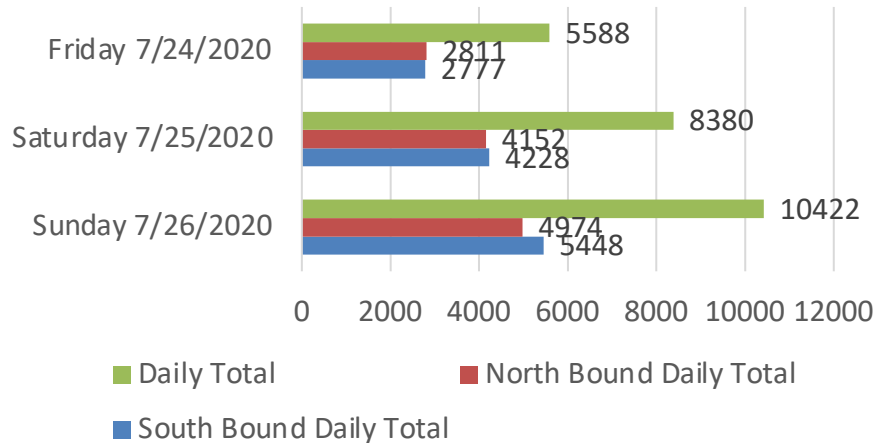
2021 Mitigation Measures – Traffic Counts



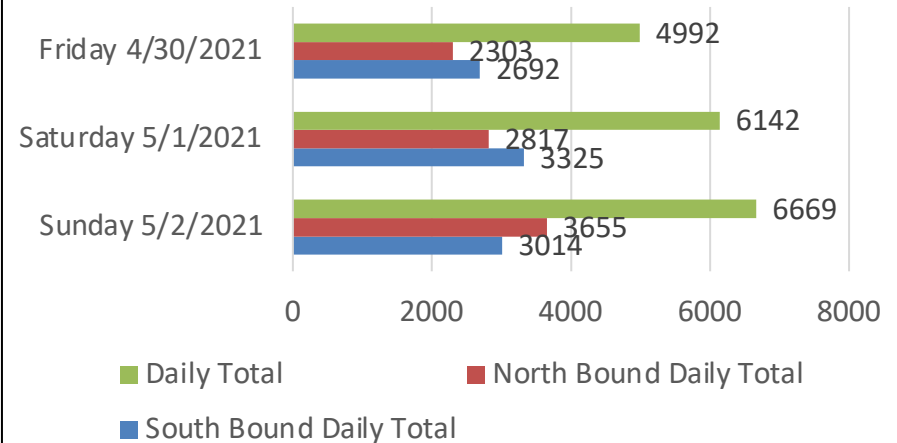
Next traffic count scheduled for May 27 - June 1 weekend.

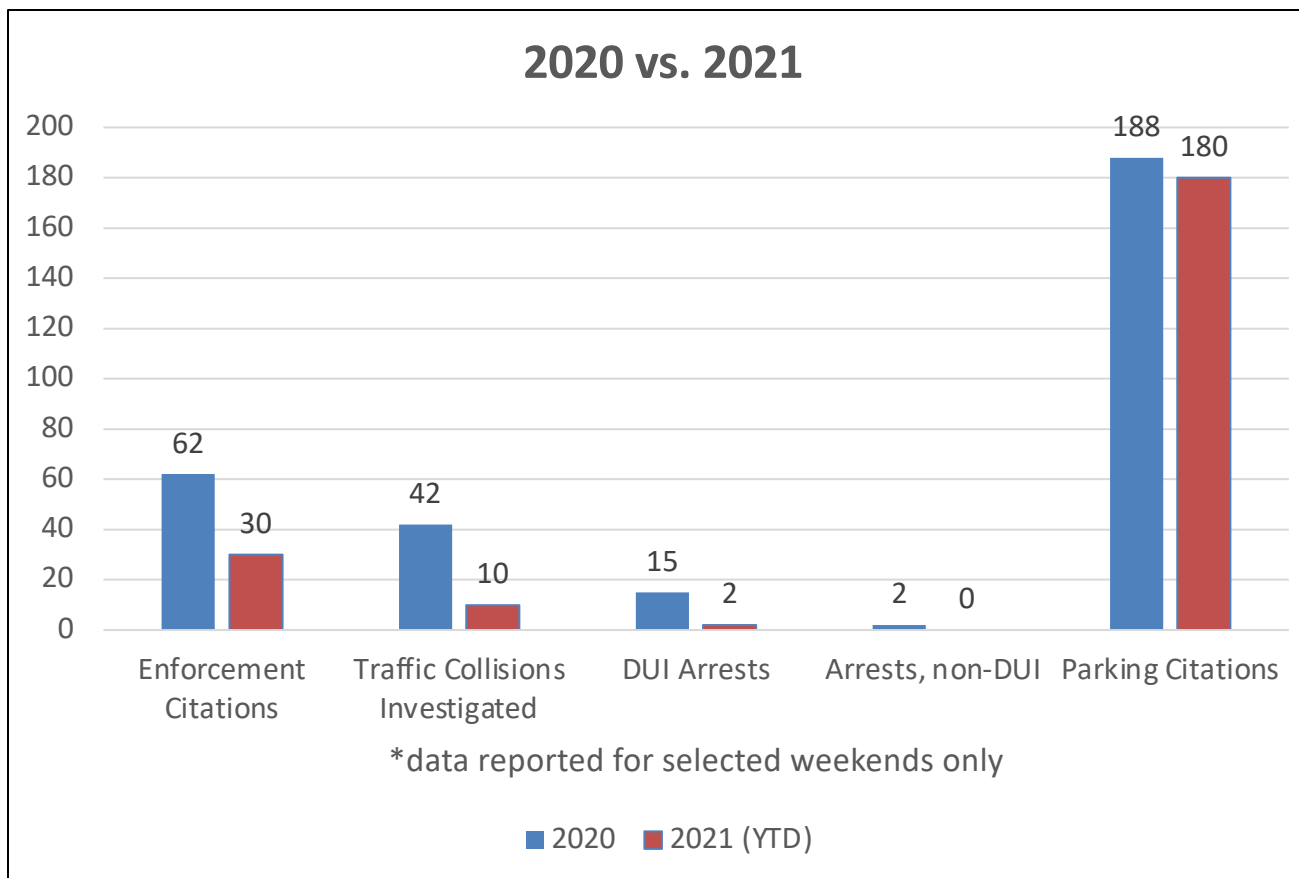
2020 vs. 2021 – Average Daily Traffic Counts

2020 – Traffic Counts



2021 – Traffic Counts







Public Works

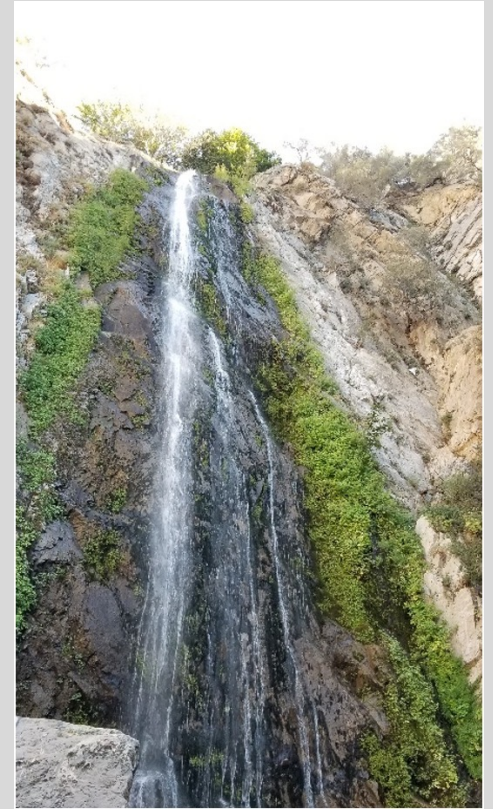
Lytle Creek - Open House
May 26, 2021



Brendon Biggs, Director

www.SBCounty.gov

Visit goSBCTA.com/LytleCreek
to view the documents
discussed during the
presentation.



San Bernardino
Council of Governments





***THANK YOU FOR
JOINING US!***

Q&A



cog

San Bernardino
Council of Governments



**Questions/Comments
following tonight's
presentation?**

**Email info@gosbcta.com or
call (877) 55-SBCTA.**



**San Bernardino
Council of Governments**

