

## **Support Material Agenda Item No. 2**

### **City/County Manager's Technical Advisory Committee**

**June 2, 2022**

**10:00 a.m.**

**LOCATION:**

San Bernardino County Transportation Authority  
First Floor Lobby Board Room  
1170 W. 3rd Street, San Bernardino, CA 92410

**TELECONFERENCE LOCATION:**

Needles City Administration & Utility Office  
817 3rd Street, Needles, CA 92363

### **Transportation**

**2. Measure I Board Workshop – Otis Greer, SBCTA**

This will be a preview of a workshop to be held with the SBCTA Board of Directors on Measure I. The presentation will include background on the structure of Measure I, projects completed, revenues and expenditures, and program balances.

*This PowerPoint was provided after the posting of the agenda.*



## Measure I (1990 – 2010)

Total Measure \$ collected      \$ **1.8 Billion**

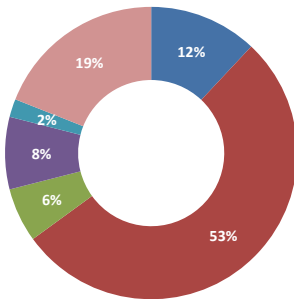
**MAJOR ACCOMPLISHMENTS**

- Route 71 – Chino and Chino Hills
- Route 210 – San Bernardino, Rialto, Fontana, Rancho Cucamonga and Upland
- I-10 HOV Lanes
- Navajo Road Widening
- Lake Gregory Improvements
- Mariposa Road Widening
- Route 60 Widening/HOV Lanes
- La Cadena Drive
- Metrolink Train Services (right of way and station construction)
- Lenwood Road Bridge Widening
- Bear Valley Road
- Route 62 Safety Improvements
- Main Street Interchange (Hesperia)
- I-215 Widening San Bernardino

 **BOARD OF DIRECTORS  
WORKSHOP**

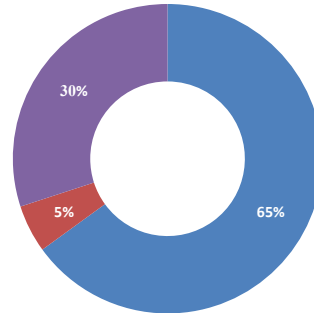
## Distribution of Revenue (1990-2010)

### SB Valley



- Major Streets Projects
- Freeway/Interchange/Corridor Projects
- Senior and Disabled Transit Services
- Commuter Rail Service
- Traffic Management Systems
- Local Streets

### Victor Valley & Rural Mtn/Des



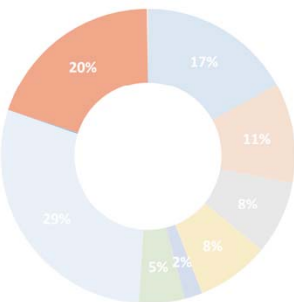
- Arterial/Regional/Highway Projects
- Senior and Disabled Transit Services
- Local Streets



BOARD OF DIRECTORS  
WORKSHOP

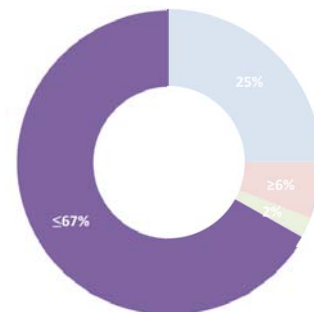
## Distribution of Revenue (2010-2040)

### SB Valley



- Major Streets Projects
- Freeway Interchange Projects
- Senior and Disabled Transit Services
- Metrolink/Rail Service
- Traffic Management Systems
- Express Bus/Bus Rapid Transit Service
- Freeway Projects
- Local Streets

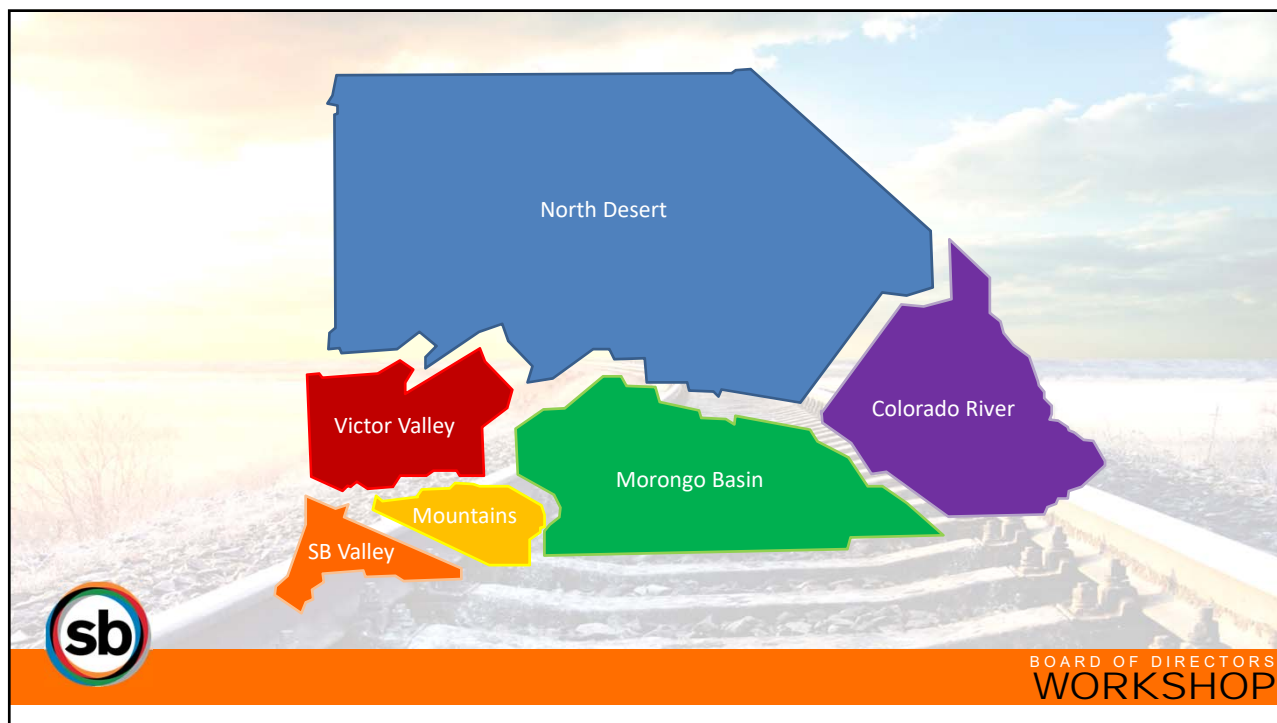
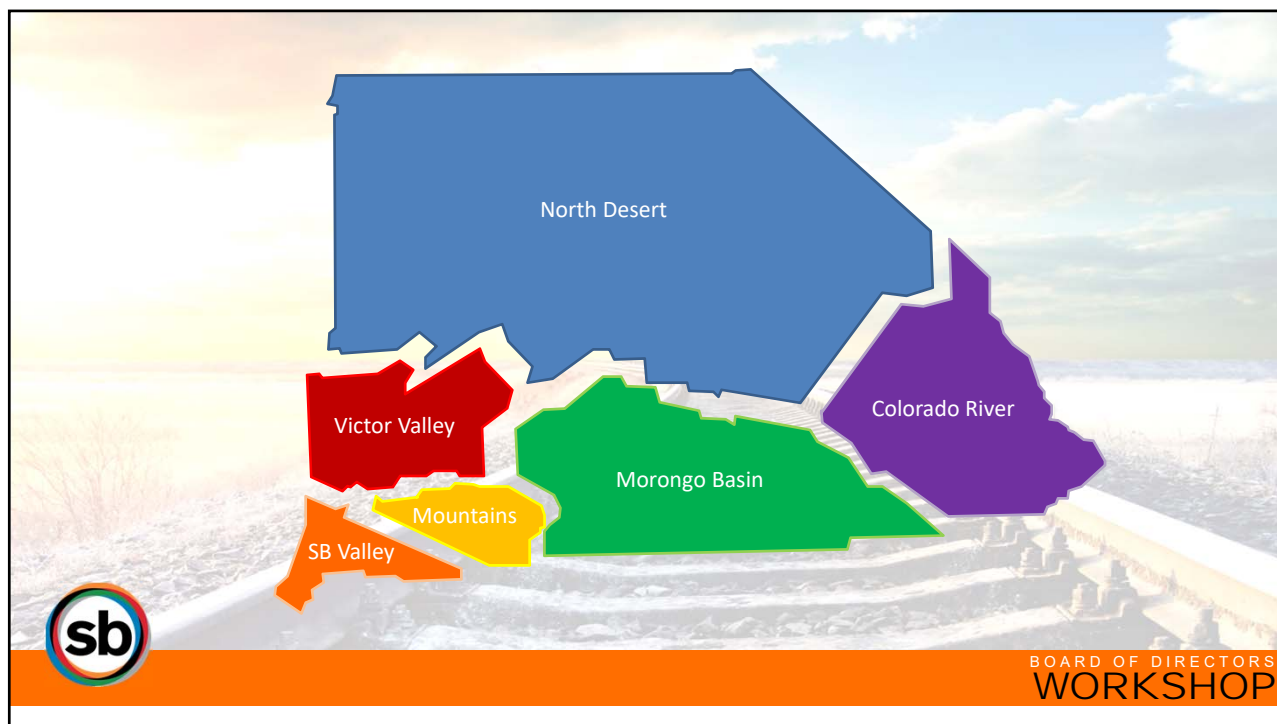
### Victor Valley & Rural Mtn/Des



- Major Local Highways
- Senior and Disabled Transit Services
- Project Development and Traffic Management Systems
- Local Streets



BOARD OF DIRECTORS  
WORKSHOP



# Colorado River

Buying Power  
(15x)

- Total Measure \$ collected \$ 2.7 Million
- Measure \$ invested in projects \$ 508 Thousand
- Total value of projects delivered \$ 7.5 Million



## COMPLETED

I-40 Connector (Needles)

## IN CONSTRUCTION

US 95 Colorado River Bridge

## PASS-THROUGH AS OF 3/22

City of Needles	\$1,539,178
County of San Bernardino	\$ 519,831
Needles Transit	\$ 150,714



BOARD OF DIRECTORS  
WORKSHOP

# Colorado River

Buying Power  
(10x)

## Major Local Highway Program

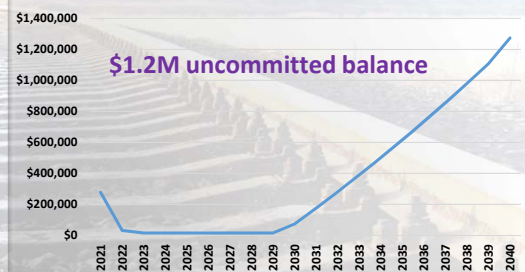
- Total Measure \$ projected (2022-2040) \$ 2.0 Million
- Measure \$ on projects in development \$ 900 Thousand
- Total value of projects in development \$ 9.4 Million



## DEVELOPMENT

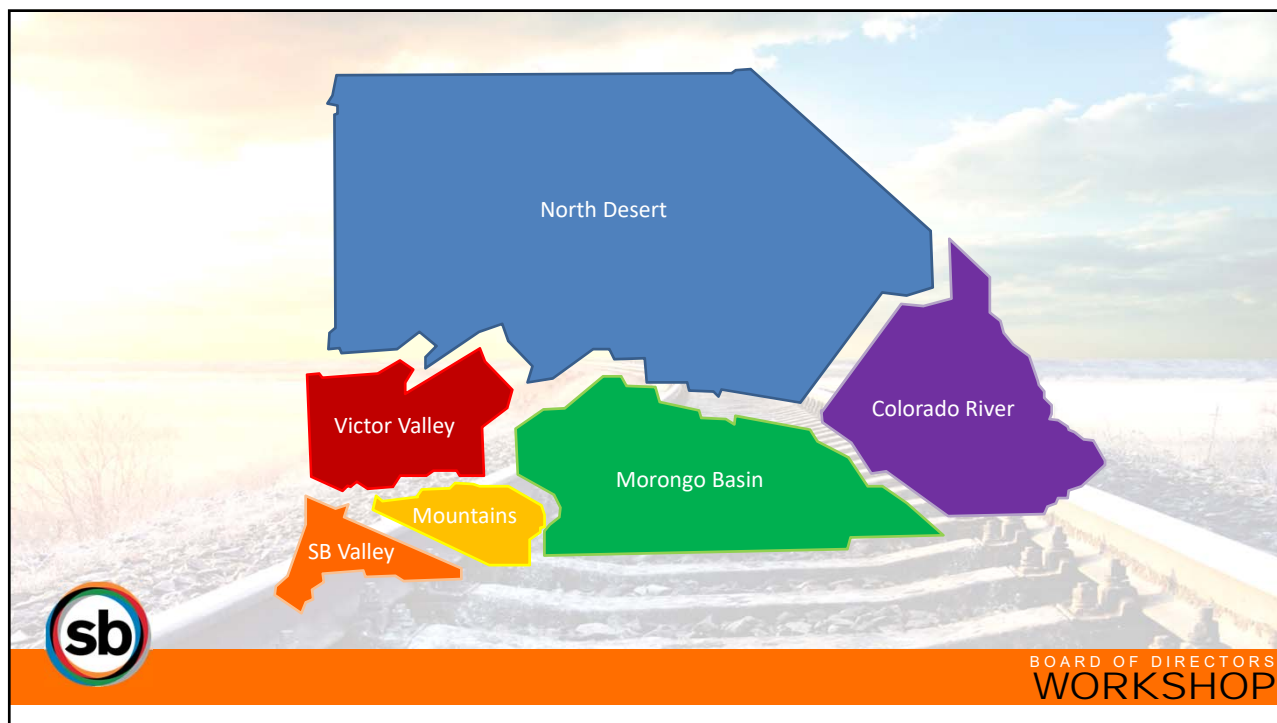
Needles Highway Improvement

Colorado River MLHP Cumulative Balance



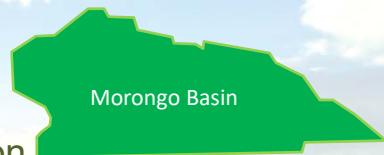
BOARD OF DIRECTORS  
WORKSHOP





# Morongo Basin

Buying Power  
(4.5x)



- Total Measure \$ collected \$ 24.0 Million
- Measure \$ invested in projects \$ 2.9 Million
- Total value of projects delivered \$ 13.0 Million

## COMPLETED

SR 62 Rotary Signal  
SR 62 Canyon to Easy  
Lear to Pole Line Study  
SR 62 Apache to Palm  
SR 62 Dumosa Signal  
SR 62 Encelia Signal

## IN CONSTRUCTION

SR 62 Lear Signal  
SR 62 Encelia to Larrea  
MB Area Traffic Study

## PASS-THROUGH AS OF 3/22

City of Twentynine Palms \$5,525,333  
Town of Yucca Valley \$8,599,980  
County of San Bernardino \$4,134,826  
MBTA \$1,337,867



BOARD OF DIRECTORS  
WORKSHOP

# Morongo Basin

## Major Local Highway Program

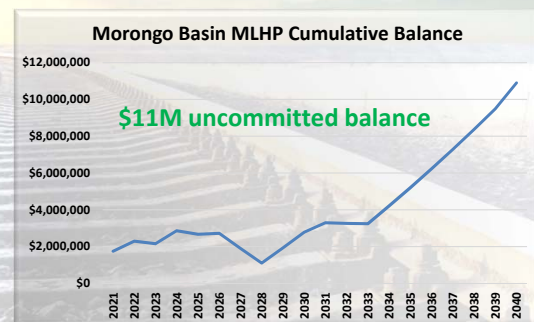
Buying Power  
(8.4x)



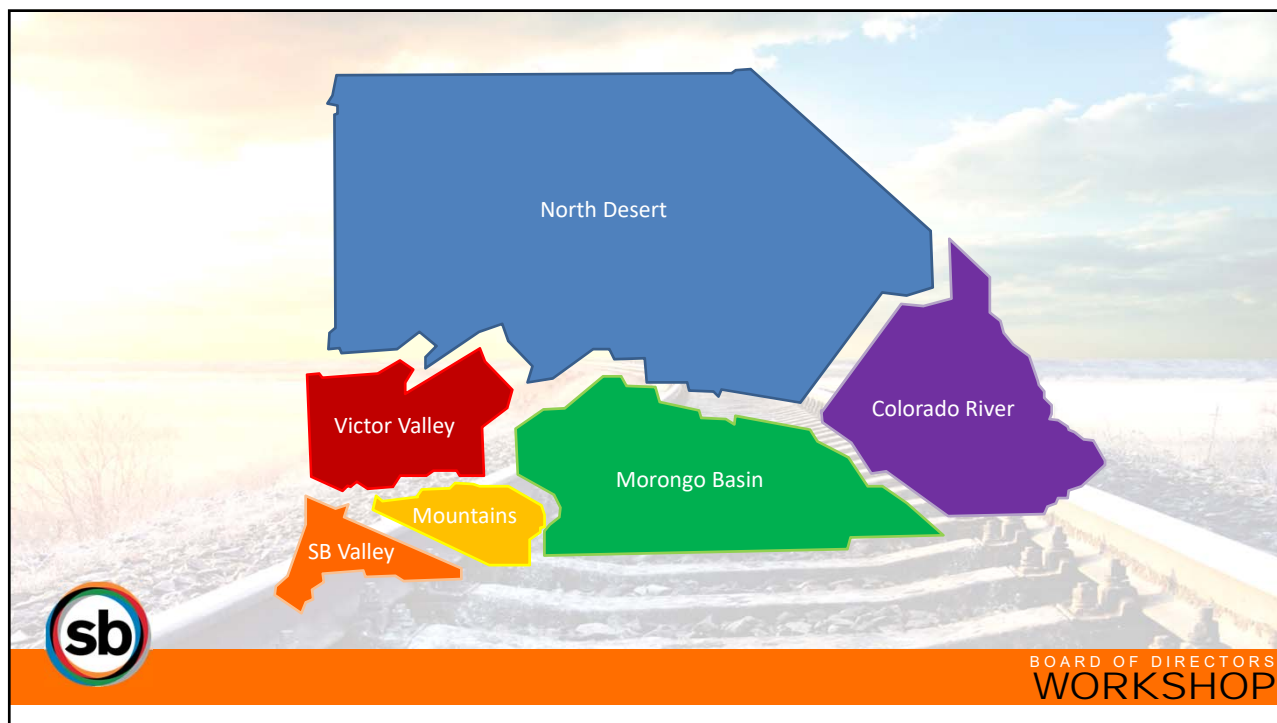
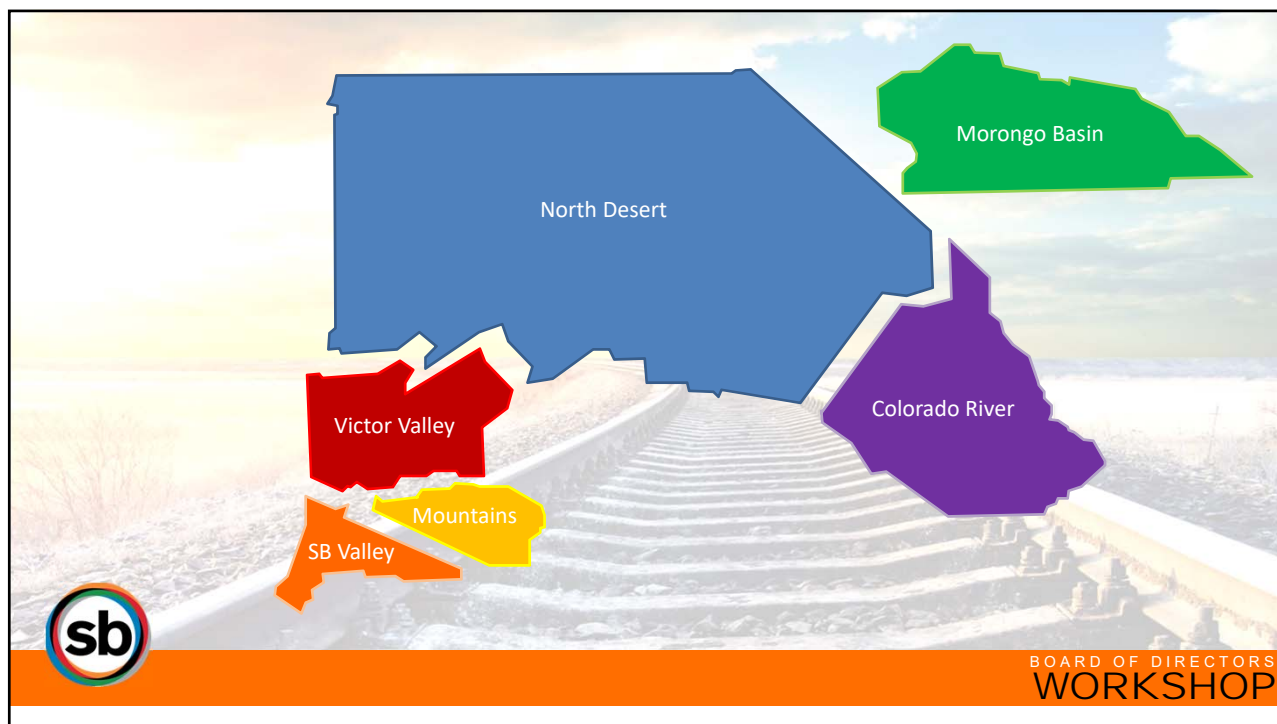
- Total Measure \$ projected (2022-2040) \$ 17.5 Million
- Measure \$ on projects in development \$ 8.0 Million
- Total value of projects in development \$ 66.9 Million

## DEVELOPMENT

Split Rock Avenue  
SR 62 Encelia to Larrea – Ph 2A  
SR 62 Encelia to Larrea – Ph 2B  
SR 62 Widening  
Yucca Trail Widening



BOARD OF DIRECTORS  
WORKSHOP





# Mountains

Buying Power  
(1.5x)



- Total Measure \$ collected \$ 21.6 Million
- Measure \$ invested in projects \$ 2.5 Million
- Total value of projects delivered \$ 3.7 Million

## COMPLETED

Village L Project  
Mountain Area Study

## IN CONSTRUCTION

Moonridge Road Roundabout

## PASS-THROUGH AS OF 3/22

City of Big Bear Lake \$ 4,831,707  
County of San Bernardino \$11,086,593  
MARTA \$ 1,165,220



BOARD OF DIRECTORS  
WORKSHOP

# Mountains

Buying Power  
(1x)

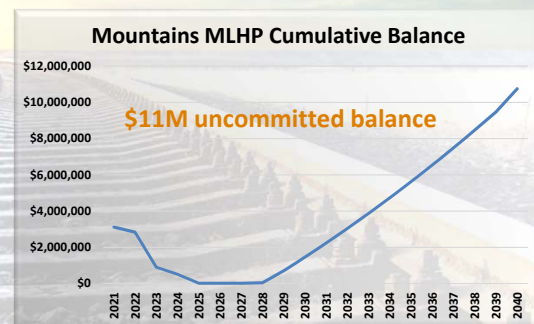


## Major Local Highway Program

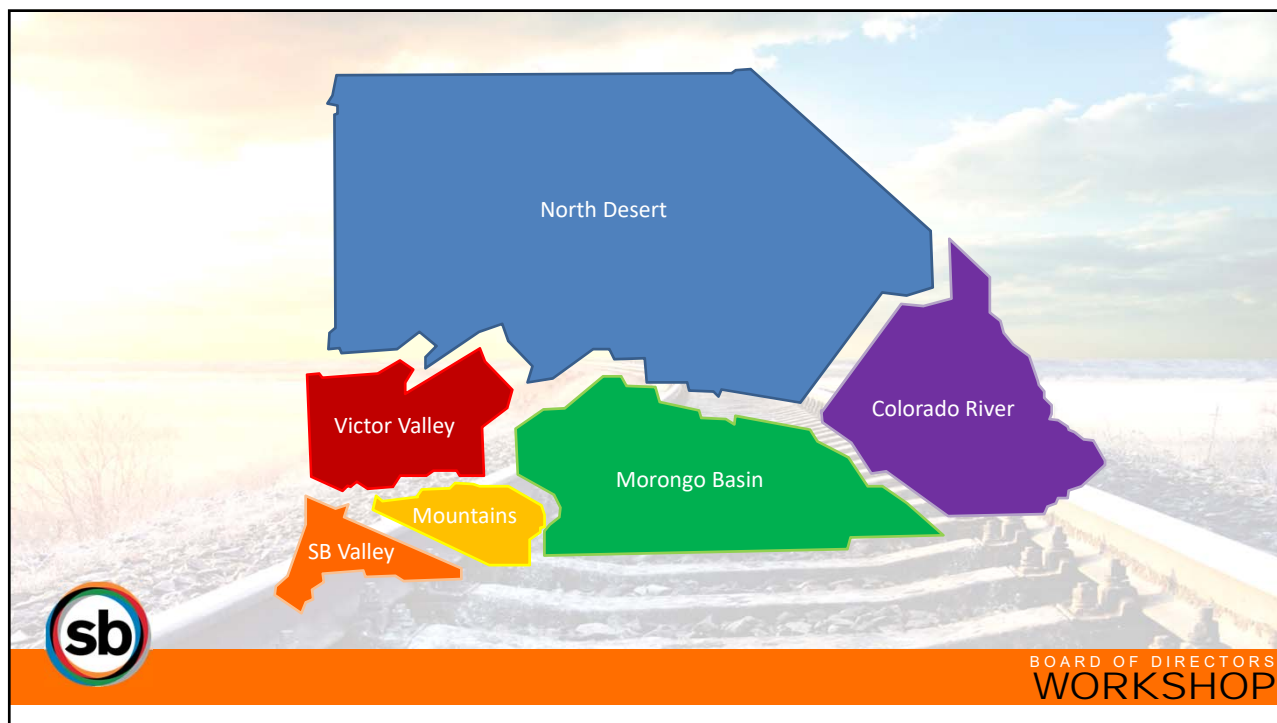
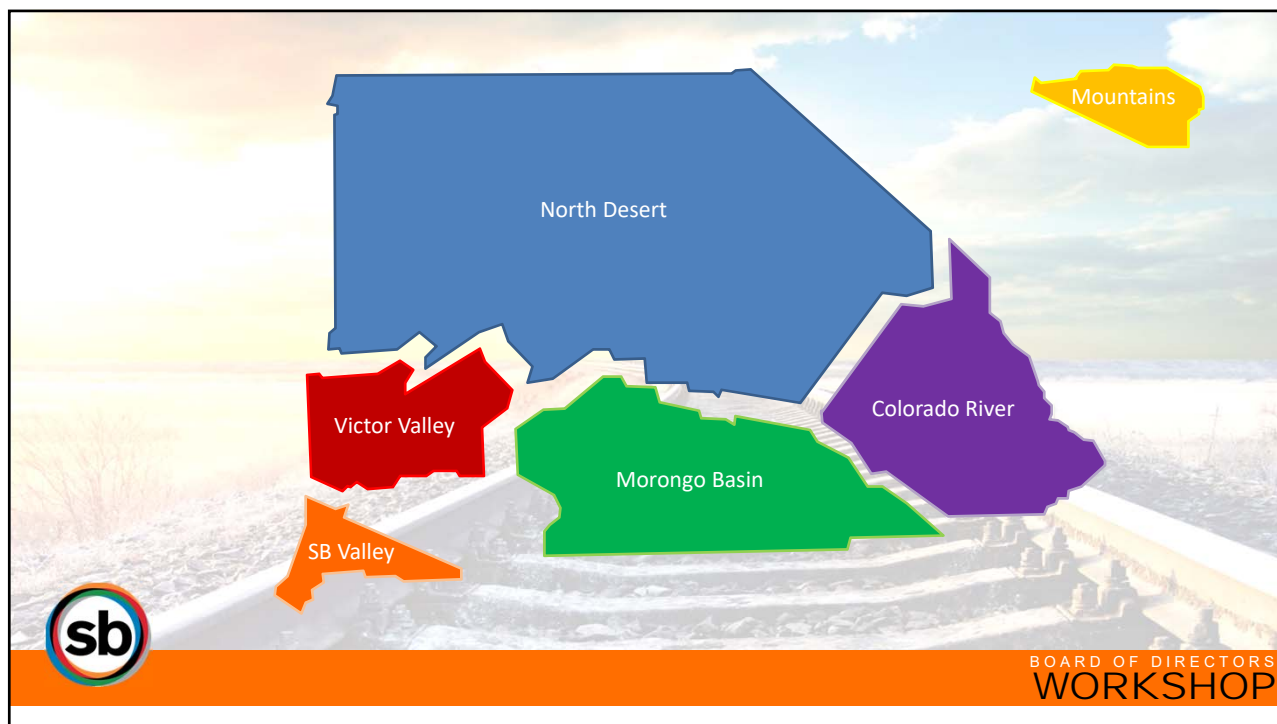
- Total Measure \$ projected (2022-2040) \$ 15.1 Million
- Measure \$ on projects in development \$ 4.2 Million
- Total value of projects in development \$ 4.5 Million

## DEVELOPMENT

Stanfield Cutoff Roundabout



BOARD OF DIRECTORS  
WORKSHOP



# North Desert

Buying Power  
(21x)

- Total Measure \$ collected \$ 57.0 Million
- Measure \$ invested in projects \$ 1.3 Million
- Total value of projects delivered \$ 27.0 Million



## COMPLETED

Lenwood Road Grade Separation

## IN CONSTRUCTION

## PASS-THROUGH AS OF 3/22

City of Barstow \$21,169,149  
County of San Bernardino \$19,852,743  
BAT/VVTA \$ 2,991,013



BOARD OF DIRECTORS  
WORKSHOP

# North Desert

Buying Power  
(10.8x)

## Major Local Highway Program

- Total Measure \$ projected (2022-2040) \$ 28.4 Million
- Measure \$ on projects in development \$ 15.0 Million
- Total value of projects in development \$162.7 Million



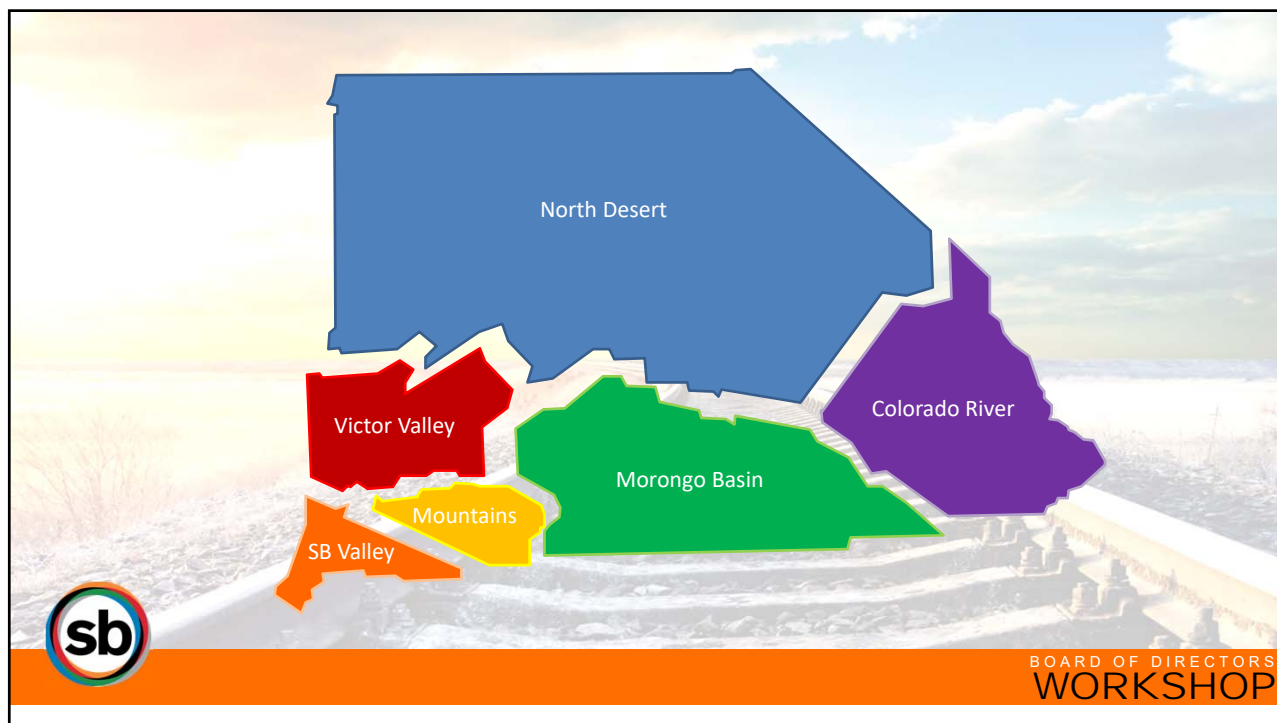
## DEVELOPMENT

Rimrock Road Rehabilitation  
North 1<sup>st</sup> Avenue Bridge – BNSF  
North 1<sup>st</sup> Avenue Bridge – Mojave  
Irwin Road Rehabilitation  
Baker Blvd. Bridge Replacement

## North Desert MLHP Cumulative Balance



BOARD OF DIRECTORS  
WORKSHOP





# Victor Valley

Buying Power  
(11.5x)



- Total Measure \$ collected \$185.0 Million
- Measure \$ invested in projects \$ 26.0 Million
- Total value of projects delivered \$304.0 Million

## COMPLETED

La Mesa/Nisqualli IC  
Ranchero/Econdidio Signal  
Ranchero Rd. IC  
SR 138 Widening – Ph. 1  
Yucca Loma Bridge  
Yucca Loma Road  
Apple Valley Road Bridge  
US 395 Widening – Ph. 1

SANBAG Alt. Financing  
HDC LA Metro Study  
HDC Rail Study

## IN CONSTRUCTION

Apple Valley Road  
Stoddard Wells Road  
Ranchero Rd. Corridor  
Yucca Loma Corridor  
Bear Valley Overhead

## PASS-THROUGH AS OF 3/22

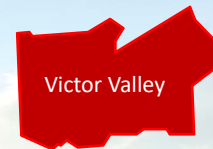
City of Adelanto \$ 8,496,611  
Town of Apple Valley \$23,107,587  
City of Hesperia \$31,733,949  
City of Victorville \$56,163,031  
County of San Bernardino \$16,440,528  
VVTA \$10,658,901



BOARD OF DIRECTORS  
WORKSHOP

# Victor Valley

Buying Power  
(7.1x)



## Major Local Highway Program

- Total Measure \$ projected (2022-2040) \$140.2 Million
- Measure \$ on projects in development \$ 36.1 Million
- Total value of projects in development \$257.5 Million

## DEVELOPMENT

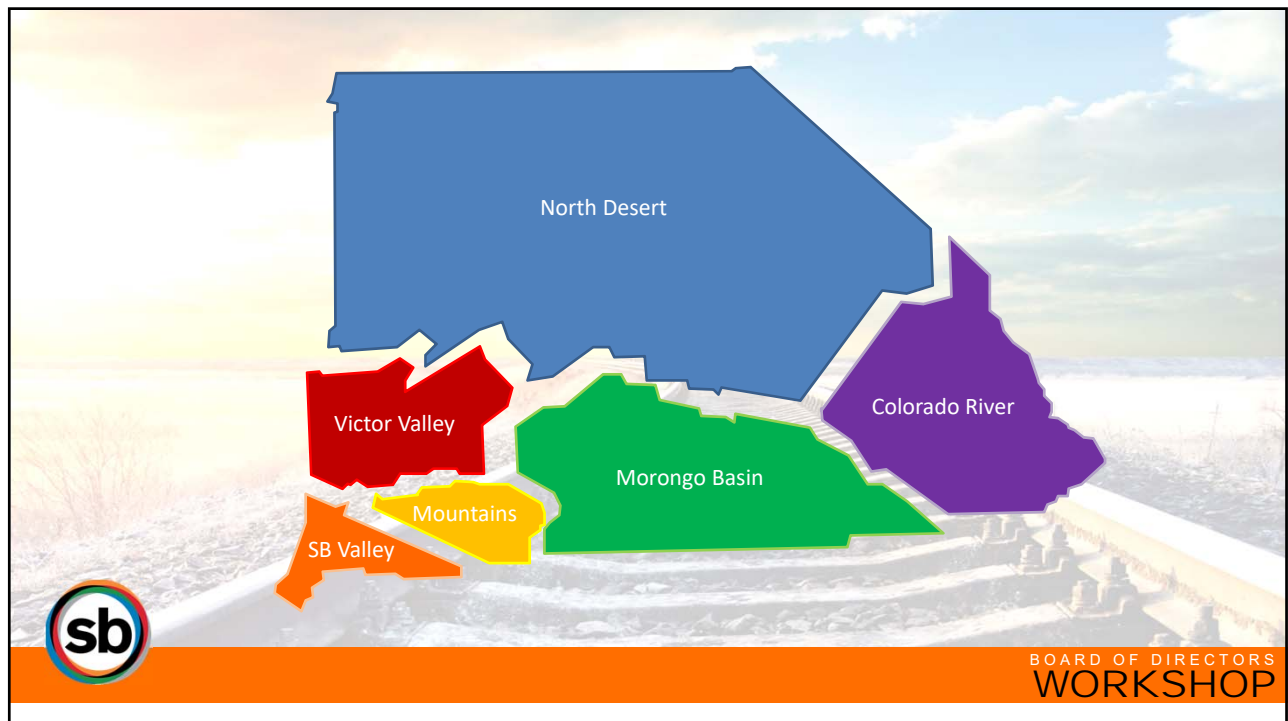
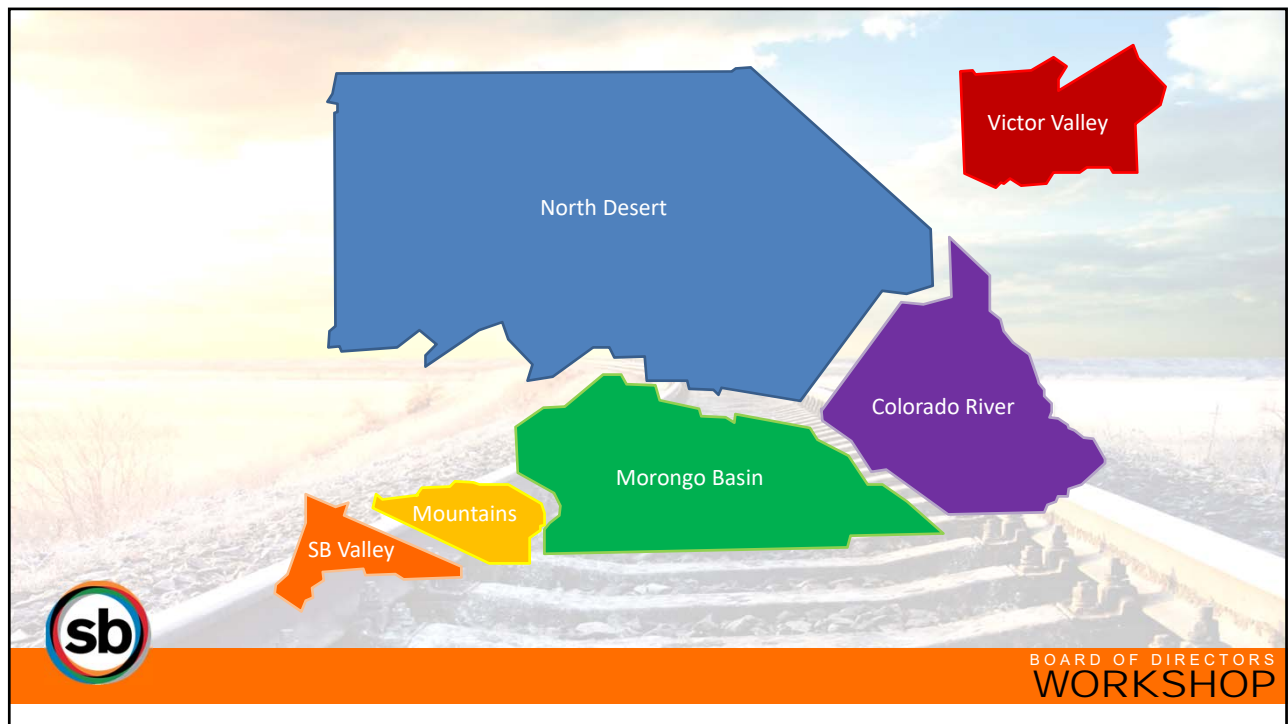
El Mirage Road  
Bear Valley Bridge  
Rock Springs Bridge  
Central Road Widening  
Johnson Road Widening  
US 395 Widening – Ph. 2  
Dale Evans Parkway  
Phelan Road Widening  
Main Street Widening – Ph. 1  
Main Street Widening – Ph. 2  
SR 18/SR 138 Study

Victor Valley MLHP Cumulative Balance



BOARD OF DIRECTORS  
WORKSHOP





# SB Valley

Buying Power  
(4.5x)



- Total Measure \$ collected \$ 1.4 Billion
- Measure \$ invested in projects \$749.2 Million
- Total value of projects delivered \$ 3.4 Billion

COMPLETED

IN CONSTRUCTION

PASS-THROUGH AS OF 3/22



BOARD OF DIRECTORS  
WORKSHOP

# SB Valley

Buying Power  
(4.5x)



COMPLETED

IN CONSTRUCTION

PASS-THROUGH AS OF 3/22



BOARD OF DIRECTORS  
WORKSHOP

# SB Valley

Buying Power  
(4.5x)



## COMPLETED

215 Bi-County HOV  
215/Barton Road IC  
10/Live Oak Canyon  
10/Riverside IC Ph 1  
60/Euclid WB Off Ramp  
60/Archibald IC  
10/Citrus Avenue IC  
10/Cherry Avenue IC  
15/Sierra Avenue Signals  
10/Tippecanoe IC  
10/Pepper Avenue IC  
North Milliken Ave GS  
Hunts Lane GS  
Palm Avenue GS

Glen Helen Parkway GS  
Laurel Street GS  
North Vineyard GS  
South Milliken GS  
Monte Vista GS  
Downtown Passenger Rail  
Valley Signal Synchro

## IN CONSTRUCTION

10/University IC  
60/Central Avenue IC  
Redlands Passenger Rail  
10/Alabama IC  
10 Express Lanes Ph 1  
210 Widening / Baseline IC  
215 Mt. Vernon/Washington  
Mt. Vernon Viaduct

## PASS-THROUGH AS OF 3/22

City of Chino	\$ 16,918,041
City of Chino Hills	\$ 15,837,271
City of Colton	\$ 10,614,675
City of Fontana	\$ 41,187,082
City of Grand Terrace	\$ 2,455,669
City of Highland	\$ 10,795,713
City of Loma Linda	\$ 4,780,028
City of Montclair	\$ 7,655,980
City of Ontario	\$ 34,490,134
City of Rancho Cucamonga	\$ 34,612,525
City of Redlands	\$ 13,955,613
City of Rialto	\$ 20,568,356
City of San Bernardino	\$ 42,709,664
City of Upland	\$ 15,199,601
City of Yucaipa	\$ 10,689,296
County of San Bernardino	\$ 24,703,640
Omnitrans	\$122,001,957



BOARD OF DIRECTORS  
WORKSHOP

# SB Valley

## Freeway Program

Buying Power  
(4.5x)



- Total Measure \$ collected \$408.2 Million
- Measure \$ invested in projects \$301.3 Million
- Total value of projects delivered \$ 1.3 Billion

## COMPLETED

215 Bi-County HOV  
215/Barton Road IC

## IN CONSTRUCTION

10 Express Lanes Ph 1  
210 Widening  
215 Mt. Vernon/Washington



BOARD OF DIRECTORS  
WORKSHOP



# SB Valley

## Freeway Program

Buying Power  
(1.8x)



- Total Measure \$ projected (2022-2040)
- Measure \$ on projects in development
- Total value of projects in development

\$ 1.3 Billion  
\$664.8 Million  
\$ 1.2 Billion

### DEVELOPMENT

- 215 Bi-County Landscaping
- 10 EB Truck Climbing Lane
- 15 Express Lanes Ph 1
- 10 Express Lanes Ph 2
- 10 Slover Mountain UP



### Freeway Program Cumulative Balance



BOARD OF DIRECTORS  
WORKSHOP

# SB Valley

## Interchange Program

Buying Power  
(3x)



- Total Measure \$ collected \$154.8 Million
- Measure \$ invested in projects \$156.6 Million
- Total value of projects delivered \$491.4 Million

### COMPLETED

- 10/Live Oak Canyon
- 10/Riverside IC Ph 1
- 60/Euclid WB Off Ramp
- 60/Archibald IC
- 10/Citrus Avenue IC
- 10/Cherry Avenue IC
- 15/Sierra Avenue Signals
- 10/Tippecanoe IC
- 10/Pepper Avenue IC

### IN CONSTRUCTION

- 10/University IC
- 60/Central Avenue IC
- 10/Alabama IC
- 210/Baseline IC
- 10/Monte Vista IC
- 10/Euclid IC
- 10/Vineyard IC



BOARD OF DIRECTORS  
WORKSHOP

# SB Valley

## Interchange Program

Buying Power  
(1.5x)

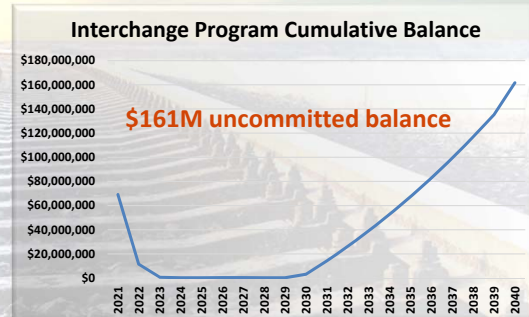


- Total Measure \$ projected (2022-2040)
- Measure \$ on projects in development
- Total value of projects in development

\$475.5 Million  
\$192.3 Million  
\$286.3 Million

### DEVELOPMENT

- 10/Cedar Avenue IC
- 215/University Pkwy IC
- 210/Waterman Avenue IC
- 10/Mt. Vernon IC
- 10/Riverside Avenue IC Ph 2
- 210/5<sup>th</sup> Street IC
- 10/Wildwood Canyon IC



BOARD OF DIRECTORS  
WORKSHOP

# SB Valley

## Major Street Program

Buying Power  
(5.6x)



- Total Measure \$ collected\* \$ 75.2 Million
- Measure \$ invested in projects \$103.4 Million
- Total value of projects delivered \$576.7 Million

### COMPLETED

- North Milliken Ave GS
- Hunts Lane GS
- Palm Avenue GS
- Glen Helen Parkway GS
- Laurel Street GS
- North Vineyard GS
- South Milliken GS
- Monte Vista GS

### IN CONSTRUCTION

- Mt. Vernon Viaduct
- 10/Fourth Street Bridge UC



\* Grade Separation Program revenue + Arterial projects implemented by SBCTA

BOARD OF DIRECTORS  
WORKSHOP



# SB Valley

## Major Street Program

Buying Power  
(10.9x)

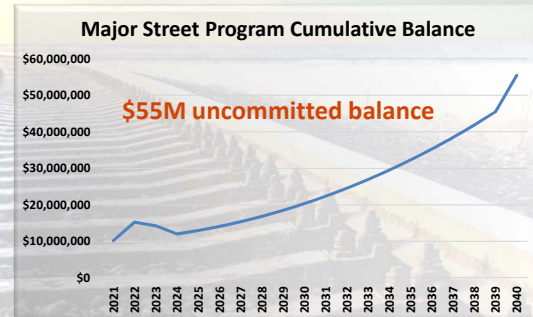


- Total Measure \$ projected (2022-2040)
- Measure \$ on projects in development
- Total value of projects in development

\$150.7 Million  
\$ 3.0 Million  
\$ 32.7 Million

### DEVELOPMENT

Glen Helen Parkway GS Ph 2



BOARD OF DIRECTORS  
WORKSHOP

# SB Valley

## MetroLink/Rail Program

Buying Power  
(3.9x)



- Total Measure \$ collected \$112.6 Million
- Measure \$ invested in projects \$128.7 Million
- Total value of projects delivered \$500.5 Million

### COMPLETED

Downtown Passenger Rail

### IN CONSTRUCTION

Redlands Passenger Rail



BOARD OF DIRECTORS  
WORKSHOP

# SB Valley

Buying Power  
(8.3x)



## Metrolink/Rail Program

- Total Measure \$ projected (2022-2040)
- Measure \$ on projects in development
- Total value of projects in development
- Measure \$ on operations

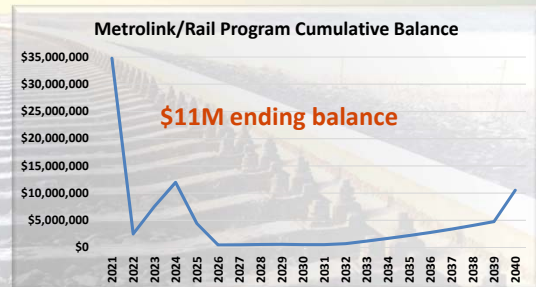
\$345.8 Million  
\$ 22.7 Million  
\$188.0 Million  
\$311.3 Million

### DEVELOPMENT

Lilac to Rancho Double Track  
Gold Line Extension

### OPERATIONS

Redlands Passenger Rail  
Gold Line Extension



BOARD OF DIRECTORS  
WORKSHOP

# SB Valley

Buying Power  
(34.3x)



## BRT/Express Bus Program

- Total Measure \$ collected \$ 33.5 Million
- Measure \$ invested in projects \$ 5.5 Million
- Total value of projects delivered \$188.6 Million

### COMPLETED

E Street BRT

### IN CONSTRUCTION



BOARD OF DIRECTORS  
WORKSHOP

# SB Valley

Buying Power  
(5.4x)

## BRT/Express Bus Program

- Total Measure \$ projected (2022-2040)
- Measure \$ on projects in development
- Total value of projects in development
- Measure \$ on operations

\$345.8 Million  
\$ 53.7 Million  
\$287.5 Million  
\$ 69.3 Million

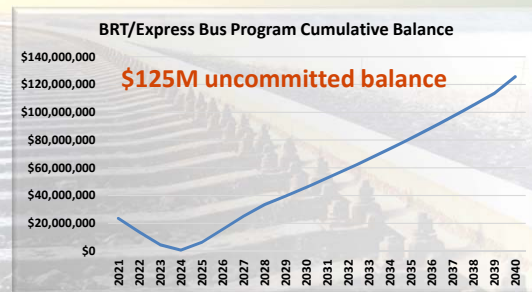


### DEVELOPMENT

West Valley Connector

### OPERATIONS

West Valley Connector



BOARD OF DIRECTORS  
WORKSHOP



BOARD OF DIRECTORS  
WORKSHOP



