

ON THE GO

News for Your Employees

Download English Version

Download Spanish Version

Get Rolling for Bike Month



May is National Bike Month. There's plenty in store to help Southern Californians discover the joys of two-wheeled travel—whether to work, along a winding trail, or simply on a jaunt to run local errands.

Here's what's happening...

Throughout Southern California

- Pledge to participate in Bike Month at metrolinktrains.com for a chance to win an Aventon e-bike prize package.

- Cyclists can ride free on Metrolink during Bike Week, which starts May 16, when they bring a bike onboard.

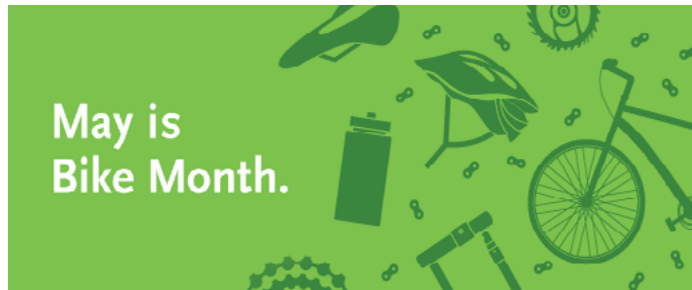
- Look for more Metrolink Bike Month news on [Facebook](#) and [Twitter](#).

In Los Angeles County

Metro is encouraging people to give bicycling a try—anytime and anywhere—all month long. In addition, Bike to Work Week is May 16-20 and Bike to Work Day is Thursday, May 19.

Open Streets on Sunday, May 1: The month will kick off with the **626 Golden Streets** event in San Gabriel Valley. Participants of all ages are invited to enjoy miles of car-free music, art, food and entertainment.

Win Prizes: Your employees who commute by bike have a chance to win great prizes. To qualify for the prize drawing, commuters simply log onto ridematch.info, set up a profile and then track their bicycle commute trips throughout May on the calendar. The more often they bike to work, the more chances they have to win.



Continued on page 2 →

Are You Missing Out on This Easy Rideshare Marketing Strategy...?

If you're not sending out the monthly *On the Go for Commuters*, you're missing out on a chance share the latest commute news with employees—easily and for free.



What It Is

On the Go for Commuters is a 1-page newsletter created by your county transportation agencies that is emailed monthly to ETCs. Each issue gives your employees important news on what's

Continued on page 3 →

Metrolink Adds More Trains

Metrolink last month restored 24 trains and added two new trains to help riders better get around Southern California as COVID-19 restrictions continue to ease.

Weekend service on some lines was also improved for riders who want to take the train to explore area attractions and leave the car at home.

See the full schedule at metrolinktrains.com and on the [Metrolink mobile app](#).



Calendar of Events

Download Commuter News

Download this Issue as PDF

Bike Month

continued from page 1

Metro Bike Share Discounts: During Bike Month, a 30-Day Bike Share Pass is just \$1 (a \$16 savings) when purchasing [via the app](#) or [online](#) (including on [taptogo.net](#)) using the code BIKEMONTH22.

You can ride a Metro Bike Share bike free on May 19 (code: 051922), and annual passes are 50% off May 19-20 (code: BIKETOWORK22).

Virtual Biking Classes: Metro will host free, online classes to teach riders bike commuting basics such as choosing the right bike, mapping a route and fixing a flat tire.

Spreading the Word: Commuters will be encouraged to use hashtags #BikeThere, #BikeAnytime and #BikeAnywhere to share their biking experiences.

Contact: Get details at [metro.net/bikemonth](#) and on [Facebook](#) and [Twitter](#).

In Orange County

The theme for Bike Month in Orange County is “Bike There,” and people are encouraged not only to bike to work, but also on errands, for fitness and just for fun.

Win Prizes: Each week, Orange County Transportation Authority (OCTA) is emphasizing a different aspect of biking. Participate in all four weeks and join the OCTA Strava Club to receive five chances



to win one of two great prizes:

- Grand Prize: Trek Dual Sport 1 - 2022 Bike
- 1st Prize: Bontrager Ion Pro RT Front Bike Light

Get in on the Action Each Week:

May 1-7 | Bike to Safety Week – visit OCTA online for [safety tips for riders](#).

May 8-14 | Bike to Fun Week – Bike to your favorite place to eat, drink, shop or see a movie.

May 15-21 | Bike to Work Week – Bike to work or to your nearby bus stop or Metrolink station. All OC Bus vehicles have racks on front to stow bikes, and you can [bring your bike aboard Metrolink trains](#).

May 22-28 | Bike to Fitness – Biking is great exercise and Orange County has [trails for riders of all skill levels](#), including the [OC Loop](#).

Contact: Get details at [octa.net/BikeMonth](#), as well as on [Facebook](#) and [Twitter](#).





Bike Month

continued from page 2

In Riverside/San Bernardino Counties

Bike Month is a good time to remind employees that riding a bike to work may help them qualify for special incentives through IE Commuter.

If they're new to ridesharing—which includes bicycling—they can earn incentives of \$5 a day for the first three months.

Get details on the new incentive on pg. 6.



In Ventura County

Throughout Bike Month, Ventura County Transportation Commission (VCTC) is encouraging people to bike to work as well as anywhere else they want to go.

Win Prizes: **Make the pledge** and bike during Bike Week, May 16-20, for a chance to win one of several \$250 Visa gift cards.

Helpful Videos: From week to week, VCTC will feature helpful videos on various aspects of bicycling, including safety, the benefits of biking to replace car trips, bicycle commuting and biking for exercise.

Bike Resources: VCTC recently updated its **regional bike map** to help riders find a bike-friendly route.

Plus, a Bargain for Those Who Do a

Bike-Transit Mix: Through June, **fares for all Ventura County buses are half price.**

Contact: Get details at goventura.org and on [Facebook](#) and [Twitter](#).

Are You Missing Out on This Easy Rideshare Marketing Strategy...?

continued from page 1

happening in ridesharing in Southern California—from special events, to changes in bus/rail service, to ways to save money on the commute, and more.

You'll find a link to download this month's newsletter (in English and Spanish) **at the top of page 1**. On alternate months, the newsletter is emailed on its own to ETCs.

It's not only a valuable tool to get employees to try alternatives to driving alone, but *On the Go for Commuters* counts as an approved marketing strategy if you submit an **Employee Commute Reduction Plan to the South Coast AQMD**.

ON THE GO FOR COMMUTERS COUNTS AS AN APPROVED MARKETING STRATEGY IF YOU SUBMIT AN EMPLOYEE COMMUTE REDUCTION PLAN TO THE SOUTH COAST AQMD.

Tips for Incorporating On the Go Into Your Own Newsletter...

Feel free to also use stories you read in *On the Go for Commuters* in your own in-house employee newsletters.

In an effort to encourage ETCs to share rideshare news, we allow the articles to be copied word for word.

Please note: While you are allowed to use the text of articles in your own publications, photos

and images cannot be used due to varying copyright limitations.

Not Sure If You're Regularly Receiving On the Go for Commuters?

Contact your county rideshare representative for more information.



Sending It Out to Employees

On the Go for Commuters is sent to you as a downloadable PDF around the first of every month.

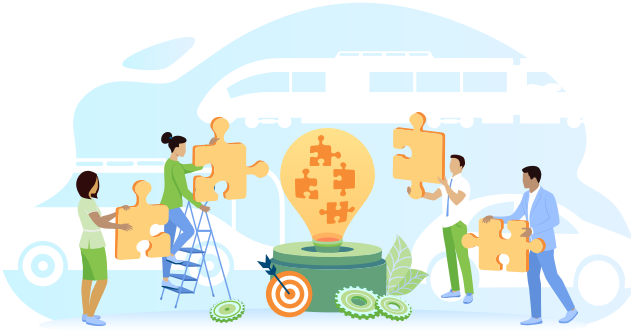
Some ways to distribute:

- Send an email to employees with the PDF(s) attached.
- Print the PDF(s) and distribute to employees' in-boxes.
- Print out and post in areas such as lunch rooms, bulletin boards, in the Rideshare Office, etc.



LOS ANGELES COUNTY

LAX Launches New TMO



As part of its sustainability plan to move to zero carbon emissions, Los Angeles World Airports (LAWA) recently launched a Transportation Management Organization (TMO) for employers within LAX. All of the roughly 200 employers with workers reporting to LAX are required to participate in the TMO.

The TMO, called commuteLAX, provides ride-matching and trip planning services, connecting people working at LAX with others who might want to carpool or vanpool. Using ridematch.info and other transit resources, they assist with bus/rail routing for employees, and offer a guaranteed ride home program.

The TMO will form an advisory group consisting of LAX employers that will help plan for additional services to include incentives, subsidies, and AQMD Rule 2202 compliance assistance.

“We wanted to create a one-stop-shop for employers and employees to go to,” says Melissa Molina, Rideshare Program Administrator at LAWA. “We knew we had thousands of employees commuting from all over Southern California, and there wasn’t one central place where they could match up with each other.”

While the initial months have concentrated on outreach, as of July 2022, LAWA will be collecting annual fees. Employers that offer certain benefits – such as providing a \$50 or more subsidy for transit and vanpooling – may qualify for a discount.

For more information, call 424.646.7665, email commuteLAX@lawa.org or visit lawa.org/commutelax.

**“WE WANTED
TO CREATE A
ONE-STOP-SHOP
FOR EMPLOYERS
AND EMPLOYEES
TO GO TO.”**

Dodger Stadium Express Is Rolling Again

Baseball season is upon us, and the Dodger Stadium Express is again offering free rides for ticket holders to and from the stadium.

Buses run from two locations: Union Station and Harbor Gateway Transit Center in the South Bay with stops at four stations along the 110 freeway (Rosecrans, Harbor Freeway, Manchester and Slauson).

Get details at metro.net.





ORANGE COUNTY



Save with the OC Bus Value Pass

OC Bus riders can now save up to 40% with the new Value Pass.

Through July 15, riders can purchase a Value Pass with five 1-Day passes for \$15 (a \$10 savings). A 30-Day pass is \$40 (a \$29 savings).

Find out more and purchase passes at participating retail stores, online at octa.net or using the OC Bus mobile app.

Making Metrolink Connections (for Free!)

If your worksite is located near the Metrolink Tustin or Irvine stations—but not close enough to walk the distance to work—here's good news. OCTA's iShuttle may be able to get your employees from the station to work (and back again), at low fares or even free.

iShuttles are timed to meet Metrolink trains, even waiting 15 minutes if one is running late.

Transfers are free from OC Bus, Metrolink and Amtrak. Cash fare is just \$1 (or \$5 for a 10-ride card, available from the driver).

Tustin iShuttle offers three routes serving the Irvine Business Complex area, including a stop at John Wayne Airport.

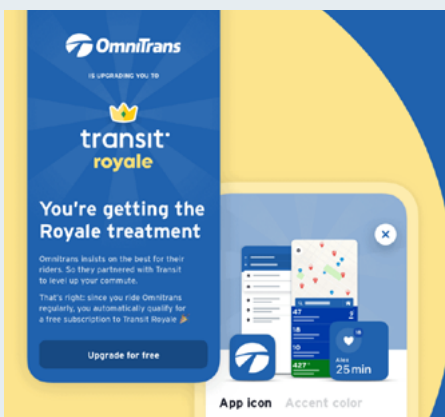
The Irvine iShuttle currently services the Irvine Spectrum Center and nearby.

Some routes are temporarily discontinued, so visit octa.net or call 714.636.7433 for the most up to date information.



RIVERSIDE/ SAN BERNARDINO COUNTY

Free Upgrade on the Omnitrans App



Omnitrans is offering riders a free upgrade to its official app, **Transit**. The Transit Royale upgrade unlocks additional features that will make improve riders' transit experience.

The upgrade allows Transit users to access features such as customizable themes, greater participation in crowdsourcing to report bus arrival times, ability to mark favorite destinations and more.

To get the upgrade:

- If you haven't already, download the **Transit app**.
- Omnitrans riders will see a screen informing them that Omnitrans is upgrading their app to Transit Royale.
- From there, users can simply tap "Upgrade Now" on the main screen to redeem their subscription at no extra cost.

Find out more at omnitrans.org.

Rideshare and Earn \$5 per Day

Commuters ridesharing in the Inland Empire have a new reason to discover their best commute. Through the IE Commuter program, the Riverside County Transportation Commission (RCTC) and San Bernardino County Transportation Authority (SBCTA), are rewarding commuters with a new \$5/Day rideshare incentive.

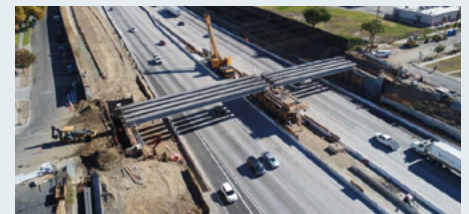


Ridesharing can help commuters significantly reduce the high costs and stress of driving alone. To add to the ongoing benefits of ridesharing, for a limited time, commuters riding transit, vanpooling, carpooling or engaging in other forms of ridesharing to work will be eligible for \$5 per day in gift cards up to \$125 in a 3 month period. The program is open to commuters who live and/or work in Riverside or San Bernardino counties, adding to the suite of no-cost rideshare rewards IE Commuter continues to offer. To get started, simply sign up and begin logging your ridesharing trips for a minimum of five workdays a month to qualify.

The \$5/Day program is also expanding eligibility to include more ridesharing commuters. This incentive program now includes the Coachella Valley and other eastern Riverside County areas, as well as those commuting into Riverside and

San Bernardino counties from other Southern California counties, in order to help reduce congestion in the Inland Empire. To qualify, both the commuter and their employer must be registered with IE Commuter to participate in the \$5/Day program.

For details visit IECommuter.org or call 1.866.RIDESHARE (866.743.3742).



5 Fun Facts About the SB Express Lanes

1. Stated to open next year, the SB Express Lanes will be located on I-10 Freeway for roughly 10 miles between the Los Angeles/San Bernardino County line and I-15.
2. The lanes will include two tolled lanes in each direction in the median of the freeway.
3. Vehicles with three or more passengers can ride in the SB Express Lanes toll-free at all times (a FasTrak Flex transponder is required). Clean air vehicles get a discount.
4. A map of live closures and detours during construction is available at gossbcta.com.
5. You can also sign up to **get regular updates delivered to your email**.



VENTURA COUNTY

Improved Metrolink Service Between Ventura and LA Counties

Metrolink, in partnership with Amtrak Surfliner, now uses a program called “Codeshare” to give train riders more options between Ventura and Los Angeles counties.

With Codeshare, if you hold a Metrolink ticket or pass, you may travel on Amtrak Pacific Surfliner trains A761, A770, A777 and A784 at no extra charge.

Codeshare trains are available seven days a week. The Metrolink Kids Ride Free on Weekends promotion is not valid on Amtrak trains.

For details, visit metrolinktrains.com.



Help with Rule 211

You may know that if you have more than 100 employees at your worksite, you’re required to comply with Rule 211, Ventura County’s air quality mandate.

Did you also know that Ventura County Transportation Commission (VCTC) can help?

All services are free and include:

- An online survey tool (vs. paper only provided by the Ventura County Air Pollution Control District, which oversees the requirement).
- Digital data entry for paper surveys
- Free RideGuides that provide employees with individualized carpool matching, transit routing and more, based on their commute and work hours
- Help promoting rideshare options and your worksite, and more.

Visit VCTC at goventura.org for a Rule 211 brochure or call 951.352.8006.



CALENDAR

Events

May is Bike Month. Bike Week is May 16-20. Get details about Southern California happenings starting on page 1 of this issue of *On the Go*.

A Virtual ETC Rideshare Marketing Workshop for Los Angeles, Orange and Ventura county employers will be held May 10, 9 a.m. to 12 Noon. Attendees will receive a marketing certificate for South Coast AQMD’s Rule 2202 and Ventura County’s Rule 211. Look for an invitation via email that will include the log-in code or contact your county rideshare representative.

The Association for Commuter Transportation (ACT) International Conference will be held July 31–Aug. 3 in Chicago, IL. It features workshops, exhibits and plenty of opportunities to network with transportation experts and other ETCs. For details and to register, visit conference.actweb.org.

Network Opportunities

Please note: Due to COVID-19 concerns, network meetings may be canceled or conducted via online platform—please contact organizers for more information.

Burbank TMO serves businesses in Downtown and Media District areas; call 818.953.7788, director@btmo.org.

Compass at Playa Vista meets regularly; call Aaron Gaul, 310.929.5946, aaron@playavistacompass.com.

Continued on page 8 ➔

Go Glendale meets regularly; call 818.543.7641.

IE Commuter offers bi-annual marketing workshops for ETCs in the Inland Empire; call 1.866.RIDESHARE (866.743.3742).

Irvine Spectrum TMA meets regularly; call 949.727.4273, email steve@spectrumotion.com.

Orange County Network meets regularly; email sharetheride@octa.net.

Pasadena TMA meets regularly; contact Talin Shahbazian at tshahbazian@cityofpasadena.net.

Santa Monica TMO meets regularly; contact Puja Thomas Patel, 424.330.4298.

Torrance Transportation Network meets regularly; call Kim Fuentes at 310.784.7902.

Training

IE Commuter Office Hours — monthly online, interactive workshops on topics of interest to ETCs in Riverside and San Bernardino counties—are May 11 and June 8, 10-11 a.m. To sign up, email info@iecommuter.org.

Metro Rideshare/Shared Mobility offers free ETC Briefings where Los Angeles area employers can [learn about the transportation survey process](#). Until further notice, briefings are being offered online only. To sign up, send an email to SharedMobility@metro.net; you will be sent a link with a password to log into the meeting. If you can't make that meeting, email Metro to set up a one-on-one virtual meeting. Upcoming ETC Briefings are May 11 and June 8, 9:30- 11:30 a.m.

South Coast Air Quality Management District (AQMD) offers two-day ETC training via Zoom for \$198.27. The next scheduled sessions are May 3 and 5, May 17 and 19, June 7 and 9 and June 21 and 23. For more information, contact the South Coast AQMD's training program at etctraining@aqmd.gov or visit aqmd.gov.



ON THE GO

Editor/Writer: Jill Smolinski

Design: Lentini Design & Marketing, Inc
Hilary Lentini, Leanna Hanson

For subscription information or to change your **ON THE GO** e-mail address, contact your representative at the rideshare office nearest you.

Riverside/San Bernardino Rideshare Program

IE Commuter Business: 1.866.RIDESHARE (866.743.3742)
Twitter: [@IECommuter](#), [@TheRCTC](#), [@goSBCTA](#)
Facebook: [@IECommuter](#), [@TheRCTC](#), [@goSBCTA](#)
Instagram: [@iecommuter](#), [@therctc](#), [@gosbcta](#)
Blog: <http://www.rctc.org/the-point/>

Metro Regional Rideshare/Shared Mobility

One Gateway Plaza
MS 99-19-06
Los Angeles, CA 90012-2952
Business: 213.922.2811
SharedMobility@metro.net
<http://thesource.metro.net/>
Twitter: [@MetroLosAngeles](#)
Facebook: [LosAngelesMetro](#)

Ventura County Transportation Commission Commuter Services

751 E. Daily Dr., Ste. 420
Camarillo, CA 93010
Business: 951.352.8006
goventura.org/rideshare
Twitter: [@GoVCTC](#)
Facebook: [GoVCTC](#)
Instagram: [@goVCTC](#)

OCTA Share the Ride Programs

550 S. Main St., Orange, CA 92868
Mailing address:
PO Box 14184, Orange, CA 92863
Business: 714.636.RIDE option 4
Twitter: [@GoOCTA](#)
Facebook: [OCTASharetheRide](#)

Commuter Information 511

[Go511.com](#)
Los Angeles/Orange/Ventura counties
[GO511.com](#)
Riverside/San Bernardino counties

For a list of Park and Ride lots in the Inland Empire, visit Go511.com/ParkAndRide.



- 📄 Download Commuter News
- 📄 Download this Issue as PDF