

# ONTHEGO

## News for Your Employees

📄 Download English Version

📄 Download Spanish Version

## Making Your Commute Program Work for Hybrid Workers

It's likely that hybrid work schedules—employees working a combination of at-home and in-office hours—are here to stay.

Nearly six out of 10 workers in remote-capable jobs say they prefer a hybrid work arrangement over working exclusively at home or in the office, according to a Gallup poll. As of February 2022, 42% were able to do so—which is anticipated to climb to 53% this year.

Only 9% prefer to work exclusively at the office.



### The pandemic changed how people work, most likely for good.

At the start of the shutdown in March 2020, many employers underwent a crash course in managing teleworkers—from setting up home offices, to finding different ways to measure productivity, to maintaining communication from a distance.

Now, many workers are returning to the worksite, but it is no longer “business as usual”—or even as it used to be.

“The reality is that, when it comes to how people work, the tune has changed to one about flexibility,” says Elham Shirazi, principal at e-Planning, a telework consulting firm. “All of this is becoming more and more pronounced as a result of what’s being called ‘the great resignation.’ A lot of people have been resigning from their jobs if they don’t have flexibility.”

Continued on page 2 ➡

## Metrolink Offers Discount Summer Day Pass

This summer (until Sept. 2) you can buy a 1-Day Pass on Metrolink for just \$15, Monday through Friday. It takes you anywhere Metrolink travels all day long.

Throughout the year, Metrolink also offers a 1-Day Pass on Saturdays and Sundays for \$10.

Find out more at [metrolinktrains.com](https://metrolinktrains.com).



## Rideshare Week Is Around the Corner

Mark your calendars: Rideshare Week in Southern California is Oct. 3-7!

Your county rideshare agencies will have plenty in store to help you promote alternatives to driving alone to your employees.

Rideshare Week is a great opportunity to get employees excited about alternatives to driving alone—including carpooling, vanpooling, transit, biking, walking and teleworking.

Stay tuned to upcoming issues of *On the Go* for details on what’s happening.



📅 Calendar of Events

📄 Download Commuter News

📄 Download this Issue as PDF

## Hybrid Commute Program

*continued from page 1*



### The need for flexibility also applies to commute options.

Not having to commute every day is the number one reason employees prefer hybrid work, according to the poll.

During the pandemic, remote workers got a glimpse of what their day could be like without adding on the time it takes to get to and from the office. Essential workers who still reported to the worksite were able to sail there on nearly empty streets and freeways.

Now traffic is back to pre-pandemic levels, gas is more than \$6 a gallon, and employees are looking for ways to do their jobs without the hassle and expense of the commute.

Does your rideshare program meet the needs of this changing work environment? Here, we offer a few tips for making sure it does:

- **Review how you offer benefits — it's no longer "one size fits all" when it comes to commuting.**

"There needs to be some consideration given to hybrid schedules so people don't end up driving alone," advises Shirazi.

If you subsidize the cost of transit, can you include daily or flex passes as well as monthly passes for those employees who don't commute daily?

If employees pay for their own parking, can they pay per day vs. only purchasing a monthly parking pass?

For employees that vanpool, can employees "share" a seat so the vanpool still meets ridership minimums, even if employees are only coming into work a few days a week?

Whenever possible, allow employees to choose more of a cafeteria style of commute options vs. having to commit to getting to work the same way every day.

- **Promote modes that feel less like a waste of valuable time.**

Employees got a taste for not sitting in traffic every day, and they have less tolerance for it now.

If you can't eliminate the commute entirely, promote options that can at least help them make better use of their time.

Riding the train or vanpooling allows people to catch up on emails or just relax and unwind. Bicycling lets them combine getting to work with their workout.

- **Ask employees what they want.** Whether it's setting up a formal focus group or just asking around, ask employees what would make their commute more bearable. You may find that they'd much rather take the train than drive, but the nearest station is too far to walk. That's an opportunity to

suggest "last mile" options such as bike share programs or micro transit.

- **It's not just where they work, but when that makes a difference in the commute.**

Can some employees work a compressed schedule, allowing them work longer hours, fewer days a week?

Can you flex schedules to make it easier for employees to meet up with carpools or vanpools, or commute outside of rush hour traffic?

Adds Shirazi, "A lot of people have carved

out their own hours while working remotely and would like to carry that forth even when returning to the worksite some days." ■

**NOW TRAFFIC IS BACK TO PRE-PANDEMIC LEVELS, GAS IS MORE THAN \$6 A GALLON, AND EMPLOYEES ARE LOOKING FOR WAYS TO DO THEIR JOBS WITHOUT THE HASSLE AND EXPENSE OF THE COMMUTE**

**NOT HAVING TO COMMUTE EVERY DAY IS THE NUMBER ONE REASON EMPLOYEES PREFER HYBRID WORK**





## How Park & Ride Lots Can Improve Your Rideshare Rate



Park & Ride lots let commuters make a short drive to a lot where they can meet up with a carpool, vanpool or catch a bus or train.

Help employees find their nearest Park & Ride lot for access to the bus, Metrolink, Metro Rail or allow them to park a car and meet up with fellow carpoolers or hop on a vanpool.

Find it at [go511.com/parkandride](https://go511.com/parkandride) (select your county from the drop down menu).

For those wanting to join a carpool or vanpool but can't find one nearby, look at a Park & Ride lot along their route to work. They might be able to cut the drive short, park, and then grab a rideshare arrangement – even if it's not close to home.

## A New Mobile-Friendly AVR Survey

The average vehicle ridership (AVR) survey has gone mobile!

For worksites in Los Angeles, Orange, Riverside and San Bernardino counties a new, mobile-friendly survey form is now available. This allows your employees to fill out and turn in the survey easily from their mobile devices. It's one more tool you can use to increase participation. (All other existing forms of the survey will still be available.)

You also have the option to create a customized QR code. You can include this QR code on posters, in emails or other outreach so employees can simply hold their device up to the code to instantly be connected to the survey.

The South Coast AQMD requires an annual survey for worksites that must meet Rule 2202 mandates. The AVR survey measures the number of people per vehicle arriving at the worksite—averaging drive-alone vehicles with commute alternatives such as carpooling, riding transit or teleworking.

For more information on the new mobile-friendly option, contact your county rideshare representative.



Ventura County also offers a mobile-friendly survey for employers that conduct an AVR survey to meet Ventura County Air Pollution Control District's Rule 211 requirements.

Find out how to get survey assistance at [goventura.org](https://goventura.org).



# LOS ANGELES COUNTY

## Get Employees Biking with Metro Bike Share for Business



Providing a free or discounted Metro Bike Share annual pass to employees is a great way to boost biking. With the Metro Bike Share for Business program, you'll save more than 40% over the regular cost of 365-Day passes—making it a more affordable option.

The Metro Bike Share program gives people access to bikes located at stations throughout Los Angeles County for commute or other short trips.

"It's ideal for commuters that don't have a bike of their own," says Metro's Andrew Kao. "It can also be a solution to the 'last mile problem' for employees that want to ride transit, but the nearest station is too far from the office to walk."

Here's how the program works:

- Sign up your worksite to participate.
- Employees then enroll to receive discounted Metro Bike Share passes. (At least five employees must participate for your company to qualify for discounted passes.)
- You pay \$89 for each annual pass. It is up to individual companies whether they provide Metro Bike Share annual passes free as an incentive, offer a partial subsidy, or simply allow employees the opportunity to buy a pass at the discounted rate.

With the annual pass, the first 30 minutes of the employees' trips are free. After that they pay just \$1.75 per each additional 30 minutes.

For more information, visit [metro.net/bikeshare/for-business](https://metro.net/bikeshare/for-business).

**WITH THE METRO  
BIKE SHARE  
FOR BUSINESS  
PROGRAM, YOU'LL  
SAVE MORE THAN  
40% OVER THE  
REGULAR COST OF  
365-DAY PASSES**

## Service Changes Mean More Buses, More Often

Metro added more bus trips to many of its busiest lines as part of recent service changes. The changes are a first step toward restoring bus service to pre-pandemic levels.

For riders, the changes mean that more buses will arrive, and they'll more frequently arrive on schedule.

To see what bus lines are impacted, visit [metro.net/mybus](https://metro.net/mybus).



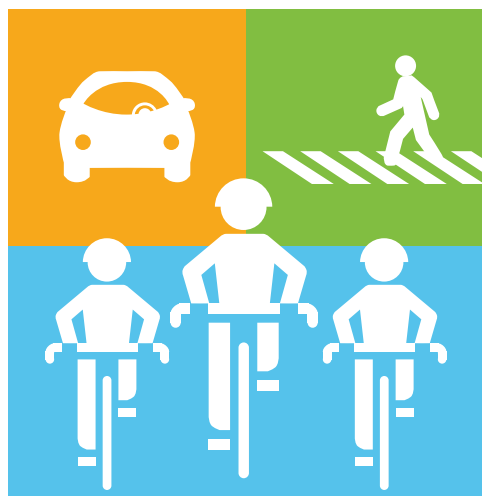
## Showcase Your Company's Commitment to Clean Air and Less Traffic

Metro is seeking sponsors for Rideshare Week 2022, which is Oct. 3-7. Your company can participate by donating prizes, gift cards, entertainment passes, hotel stays, etc. As a sponsor, your logo will be featured on posters, eblasts and other outreach material that will be sent to hundreds of employers and reaching thousands of commuters in Los Angeles County.

For details, contact Denise Van Stratten at [vanstrattend@metro.net](mailto:vanstrattend@metro.net) or call 213.922.2811.

# ORANGE COUNTY

## Bike Safety Tips from OCTA



Do you know the rules of the road when cycling? OCTA offers an online guide with tips for biking safely.

From how to gear up, to ways to safely share the road with auto traffic, it's a valuable resource for cyclists of all ages.

Find it at [octa.net/bike](https://octa.net/bike).

## Take the OC Bus Survey for a Chance to Win \$100

OC Bus recently released proposed changes that aim to improve service on its most popular lines, add bus trips, reduce transfer times and eliminate some underused routes.

They want to hear from riders!

**Take a look at the plan**, which includes specific route changes which may impact employee commutes.

**Then take a brief survey** by July 25 for a chance to win one of five \$100 VISA gift cards.

OC Bus is also accepting comments at a public hearing on July 25 at 9 a.m. at Orange County Transportation Authority (OCTA) Headquarters in Orange, as well as via phone and mail.

Find out more at [OCbus.com/Connections](https://OCbus.com/Connections).



PARTICIPATE  
FOR A CHANCE TO  
**WIN**  
**\$100**

## Help Spread the Word to Employees

OCTA offers employers a free **toolkit** that contains a booklet with proposed individual route changes, flyers, press release, as well as a suggested email blast and social media posts.

Making Better  
**Connections**



# RIVERSIDE/ SAN BERNARDINO COUNTY

## IE's \$5/Day Expands to Coachella Valley



IE Commuter's \$5/Day Incentive Program offers gift card rewards to ridesharers—up to \$125 in rewards.

Participants simply sign up and log at least five rideshare trips in their IE Commuter Commute Log per month for three consecutive months.

The incentive is open to all commuters that live or work in Riverside and San Bernardino counties, and now Coachella Valley commuters may also qualify.

Get details at [IECommuter.org/5Day](https://IECommuter.org/5Day).

## Shine a Light on Your Teleworkers

Your employees who telework could be eligible for drawings valued at up to \$100 when you participate in IE Commuter's Monthly Telework Spotlight.

For a chance to win, employees simply sign in to their online commute log at [IECommuter.org](https://IECommuter.org) and log their telework days. Each day they telework counts as a sweepstakes entry.



Your worksite must be signed up with the IE Commuter Telework Employer Assistance (TEA) program for your employees to qualify.

For more information, visit [IECommuter.org/teleworkspotlight](https://IECommuter.org/teleworkspotlight).

## Need Help Getting Vanpools Back on the Road?



Many vanpools disbanded due to the COVID-19 shutdown. As workers continue to return to the office, they may need help getting back into rideshare arrangements, including vanpooling.

IE Commuter can help you build—or rebuild—a vanpool program. They offer guidelines on identifying potential vanpoolers and offer marketing assistance.

Vanpools in Riverside and San Bernardino may also qualify for up to \$400 in monthly subsidies toward vanpool lease and operating costs.

Find out more at [IECommuter.org/vanpool](https://IECommuter.org/vanpool) or call 1.866.RIDESHARE (866.743.3742).





# VENTURA COUNTY

## Important Changes to Ventura's Guaranteed Ride Home (GRH) Program

Ventura County Transportation Commission (VCTC) offers a GRH program that takes the worry out of ridesharing for employees at participating worksites. With GRH, ridesharers can get a ride home in the event of illness, emergency, or unexpected overtime.

Changes include:

- The program recently increased the number of allowed rides home to six per commuter per calendar year.
- Employees pay for their own rides home and turn in a receipt for reimbursement (vs. only being allowed to use pre-arranged vendors).
- Approved ride options include the commuter's choice of taxi or a transportation network company such as Uber or Lyft.

For details, visit VCTC at [goventura.org](https://goventura.org).



## VCTC Buses Are Back to Regular Fares

Effective July 1, VCTC began resuming regular fares on Intercity buses.

Riders boarded free on buses during the pandemic, and VCTC recently offered half-priced rides as commuters began returning to the worksite.

Fares have now returned to their usual cash-fare rate of \$1.75 for routes in Ventura County and \$4 for out-of-county trips.

## New Carpool Lanes Open on Highway 101

Carpoolers and commuters who ride the Coastal Express may now get where they're going faster, thanks to [carpool lanes that recently opened on Highway 101](#).

The new carpool lanes are in the Carpinteria area—between Bailard Avenue and the southbound Highway 101 on-ramp at Santa Claus Lane.

During peak hours, access to these lanes is limited to vehicles with 2+ occupancy.



# CALENDAR

## Events

**Save the Date:** An ETC marketing workshop will be held Sept. 7 via Zoom for employers in Los Angeles, Orange, Riverside, San Bernardino and Ventura counties. Learn about the upcoming Rideshare Week as well as other important rideshare program news. Look for an email invitation soon.

**The Association for Commuter Transportation (ACT) International Conference** will be held July 31–Aug. 3 in Chicago, IL. It features workshops, exhibits and plenty of opportunities to network with transportation experts and other ETCs. For details and to register, visit [conference.actweb.org](https://conference.actweb.org).

**Rideshare Week in Southern California** is Oct. 3–7—save the date!

## Network Opportunities

*Please note: Due to COVID-19 concerns, network meetings may be canceled or conducted via online platform—please contact organizers for more information.*

**Burbank TMO** serves businesses in Downtown and Media District areas; call 818.953.7788, [director@btmo.org](mailto:director@btmo.org).

**Compass at Playa Vista** meets regularly; call Aaron Gaul, 310.929.5946, [aaron@playavistacompass.com](mailto:aaron@playavistacompass.com).

**Go Glendale** meets regularly; call 818.543.7641.

Continued on page 8 ➔

**IE Commuter** offers bi-annual marketing workshops for ETCs in the Inland Empire; call 1.866.RIDESHARE (866.743.3742).

**Irvine Spectrum TMA** meets regularly; call 949.727.4273, email [kelly@spectrumotion.com](mailto:kelly@spectrumotion.com).

**Orange County Network** meets regularly; email [sharetheride@octa.net](mailto:sharetheride@octa.net).

**Pasadena TMA** meets regularly; contact Talin Shahbazian at [tshahbazian@cityofpasadena.net](mailto:tshahbazian@cityofpasadena.net).

**Santa Monica TMO** meets regularly; contact Puja Thomas Patel, 424.330.4298.

**Torrance Transportation Network** meets regularly; call Kim Fuentes at 310.784.7902.

## Training

**IE Commuter Office Hours** — monthly online, interactive workshops on topics of interest to ETCs in Riverside and San Bernardino counties—are July 13 and Aug. 10, 10-11 a.m. To sign up, email [info@iecommuter.org](mailto:info@iecommuter.org).

**Metro Rideshare/Shared Mobility offers free ETC Briefings** where Los Angeles area employers can [learn about the transportation survey process](#). Until further notice, briefings are being offered online only. To sign up, send an email to [SharedMobility@metro.net](mailto:SharedMobility@metro.net); you will be sent a link with a password to log into the meeting. If you can't make that meeting, email Metro to set up a one-on-one virtual meeting. Upcoming ETC Briefings are July 13, Aug. 10, and Sept. 14, 9:30- 11:30 a.m.

**South Coast Air Quality Management District (AQMD) offers two-day ETC training** via Zoom for \$211.16. The next scheduled sessions are July 5 and 7, July 19 and 21, Aug. 9 and 11, Aug. 23 and 25 and Sept. 6 and 8. For more information, contact the South Coast AQMD's training program at [etctraining@aqmd.gov](mailto:etctraining@aqmd.gov) or visit [aqmd.gov](http://aqmd.gov).



## ON THE GO

**Editor/Writer:** Jill Smolinski

**Design:** Lentini Design & Marketing, Inc  
Hilary Lentini, Leanna Hanson

For subscription information or to change your **ON THE GO** e-mail address, contact your representative at the rideshare office nearest you.

### Riverside/San Bernardino Rideshare Program

IE Commuter Business: 1.866.RIDESHARE (866.743.3742)

Twitter: [@IECommuter](#), [@TheRCTC](#), [@goSBCTA](#)  
Facebook: [@IECommuter](#), [@TheRCTC](#), [@goSBCTA](#)  
Instagram: [@iecommuter](#), [@therctc](#), [@gosbcta](#)  
Blog: <http://www.rctc.org/the-point/>

### Metro Regional Rideshare/Shared Mobility

One Gateway Plaza  
MS 99-19-06  
Los Angeles, CA 90012-2952  
Business: 213.922.2811  
[SharedMobility@metro.net](mailto:SharedMobility@metro.net)  
<http://thesource.metro.net/>  
Twitter: [@MetroLosAngeles](#)  
Facebook: [LosAngelesMetro](#)

### Ventura County Transportation Commission Commuter Services

751 E. Daily Dr., Ste. 420  
Camarillo, CA 93010  
Business: 951.352.8006  
[goventura.org/rideshare](http://goventura.org/rideshare)  
Twitter: [@GoVCTC](#)  
Facebook: [GoVCTC](#)  
Instagram: [@goVCTC](#)

### OCTA Share the Ride Programs

550 S. Main St., Orange, CA 92868  
Mailing address:  
PO Box 14184, Orange, CA 92863  
Business: 714.636.RIDE option 4  
Twitter: [@GoOCTA](#)  
Facebook: [OCTASharetheRide](#)

### Commuter Information 511

[Go511.com](#)  
Los Angeles/Orange/Ventura counties  
[GO511.com](#)  
Riverside/San Bernardino counties

For a list of Park and Ride lots in the Inland Empire, visit [Go511.com/ParkAndRide](http://Go511.com/ParkAndRide).