

Community Notice



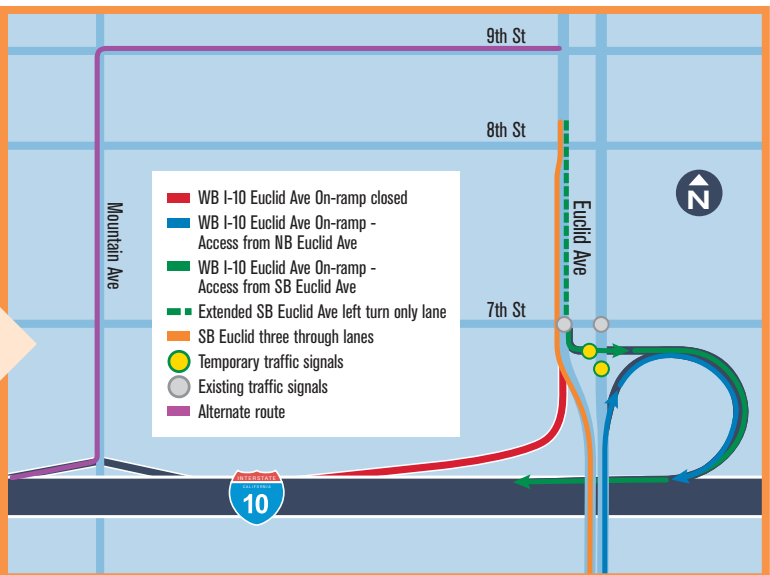
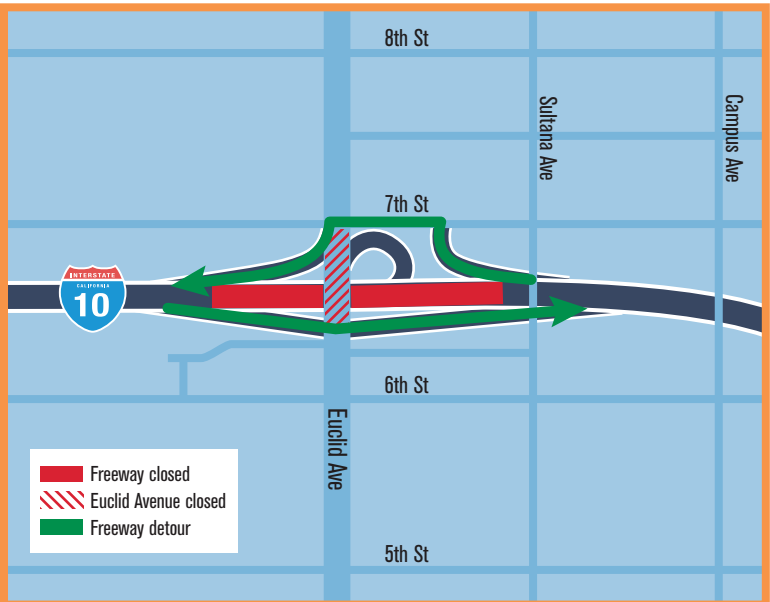
EUCLID AVENUE PARTIAL BRIDGE DEMOLITION

WHAT'S HAPPENING: The east side of the Euclid Avenue bridge over I-10 is scheduled to be demolished during two nights in late April. During demolition both directions of the I-10 will be closed at Euclid Avenue. Motorists will be routed off and on the freeway using the Euclid Avenue off- and on-ramps. Euclid Avenue over I-10 will be closed and detour routes will be posted.

WHEN:

- Friday, April 29 from 11:00 p.m. to 10:00 a.m. (the following morning)
- Saturday, April 30 from 11:00 p.m. to 11:00 a.m. (the following morning)

WHAT TO EXPECT: Construction and bridge demolition is loud and dusty. Large equipment including excavators with drill attachments, haul trucks, and water trucks will be used. Vibration will occur at times. You may hear hammering, banging, back up alarms, and engine noises as well as see bright lights from light towers and sparks from saw cutting.



SOUTHBOUND EUCLID AVENUE CHANGES:

In mid May, the WB I-10 on-ramp from southbound (SB) Euclid Avenue is scheduled to temporarily close for construction through the end of 2022. Motorists traveling SB on Euclid Avenue will be able to access the WB I-10 Euclid Avenue loop on-ramp with a new left-turn only lane. Temporary traffic lights will be in place to assist motorists entering the WB I-10 loop on-ramp. Join us for a webinar on Wednesday, May 11 to learn more. Sign up at goSBCTA.com/i10corridor.

For more information on this project, visit: goSBCTA.com/i10corridor

goSBCTA.com | info@goSBCTA.com | 877-55-SBCTA

Connect with us on our social sites @goSBCTA

