



SBCTA Long-Range Multimodal Transportation Plan for San Bernardino County



Public Meeting
October 3, 2023



Interpretation / Interpretación

- > En los controles de la reunión, haga clic en el icono de interpretación.
- > Seleccione **Spanish/Español** para escuchar el audio en español.
- Por telefono solamente: +1 (872) 240-3311
- Código de acceso: 682-001-725

Meeting Format



Meeting will be recorded



Webcams and microphones **will remain off** during the presentation



Q&A will be conducted **after the presentation**



- Zoom: Raise Hand Function
- Zoom: Type your question in the Q&A
- Phone: Dial *9 to raise your hand

AGENDA

- 1 LRMTTP Background
- 2 Existing Conditions
- 3 Key Takeaways and Next Steps
- 4 Q&A

LRMTP Background

Why the Long-Range Multimodal Transportation Plan?

SBCTA's LRMTTP will ensure the safe and efficient management, operation, and development of a regional multimodal transportation system that, when linked with appropriate land use planning, will efficiently serve the mobility needs of San Bernardino County residents, businesses, and visitors, with robust connectivity to the regional system.

- Build on statewide and regional plans
 - California Transportation Plan 2050
 - California Climate Action Plan for Transportation Infrastructure
 - SCAG Regional Transportation Plan/Sustainable Communities Strategy
- Bring together multiple planning efforts into a cohesive whole
- Identify funding opportunities

LRMTP Project Process



Get Involved

- Project website gosbcta.com/lrmtp
 - Online survey
 - Existing Conditions story map
 - Updates on project progress and events





San Bernardino County
Transportation Authority



LONG RANGE MULTIMODAL
TRANSPORTATION PLAN

Overview

The San Bernardino County Transportation Authority (SBCTA) needs your input for the Long Range Multimodal Transportation Plan (LRMTP). The LRMTP will develop a comprehensive, multimodal transportation vision for the County through 2045. The plan will incorporate strategies for improving access, safety, connectivity, and sustainability for bus and rail riders, auto and truck drivers, bicyclists and pedestrians.

The overall objective of the LRMTP is to ensure the safe and efficient management, operation, and development of a regional multimodal transportation system that, when linked with appropriate land use planning, will efficiently serve the mobility needs of San Bernardino County residents, businesses, and visitors, with robust connectivity to the regional system. The LRMTP will be integrated with local land use planning to address community and regional goals as well as state and federal goals. In addition, the LRMTP will assist local and regional agencies in developing and implementing multimodal transportation policies, programs, and projects.



Schedule

- SPRING 2023**
Project begins
- SUMMER/FALL 2023**
Identify needs, opportunities and challenges
- SPRING 2024**
Develop plan recommendations
- FALL/WINTER 2024**
Finalize LRMTP

Key Elements of the LRMTP

- Bringing together multiple planning efforts across the County into a cohesive whole
- Engaging stakeholders across the County, with particular emphasis on historically underserved and disadvantaged communities
- Understanding transportation network challenges, opportunities and gaps
- Identifying funding sources for projects and programs

Plan. Build. Move.

LRMTP Subregions

- Consistent with Measure I
- Analysis and recommendations will follow the six subregion format

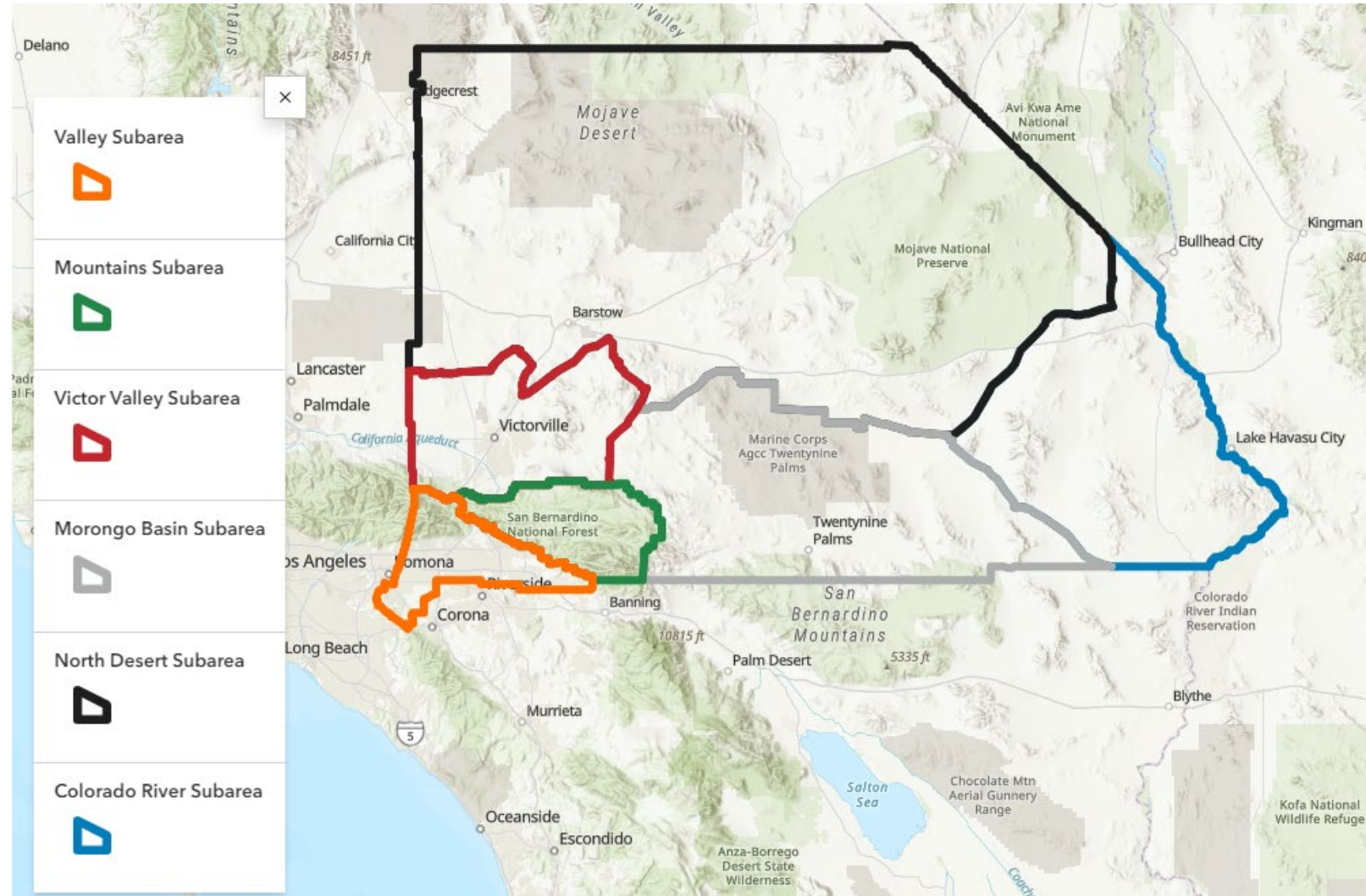


Existing Conditions

Regional Growth

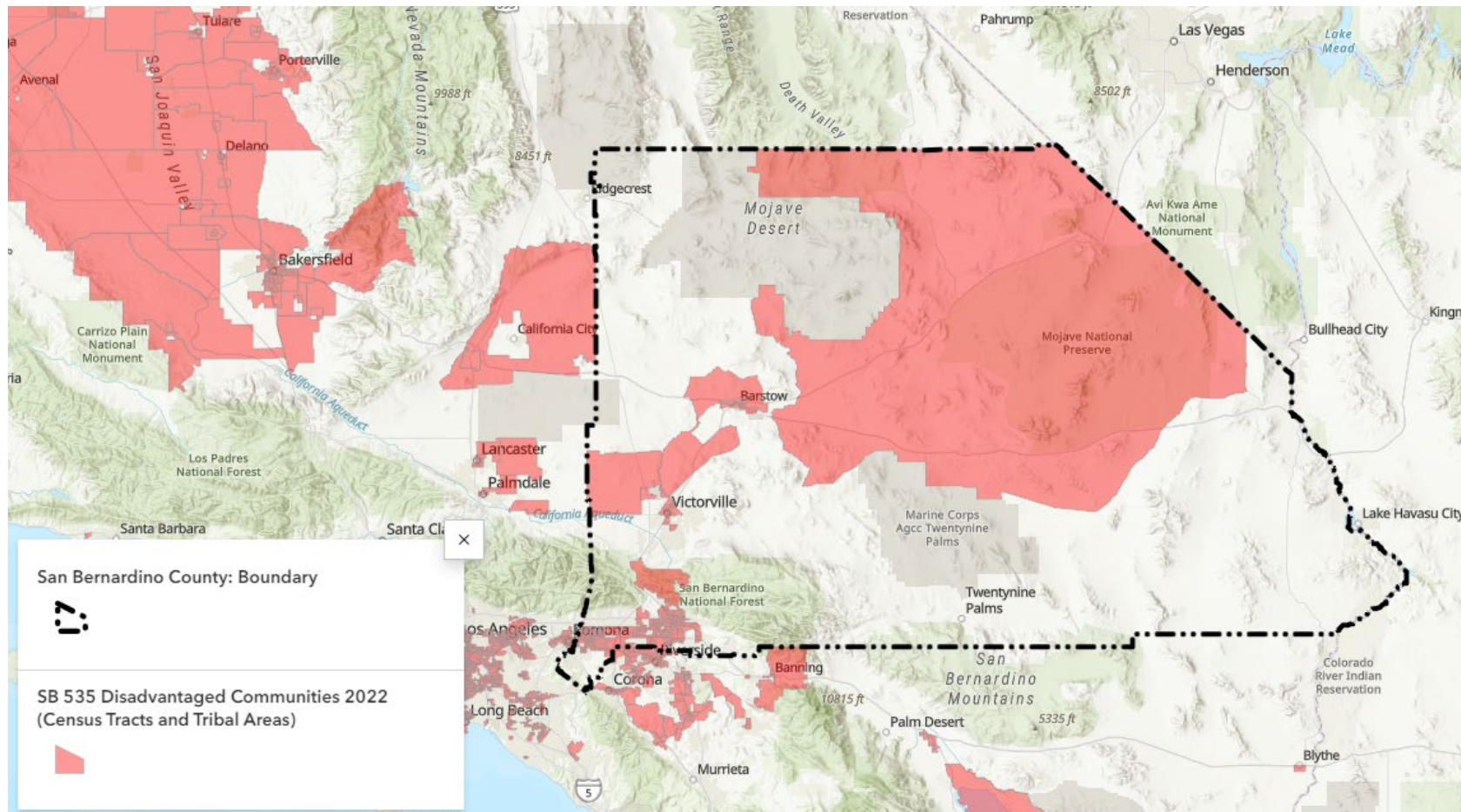
Population and employment projected to grow significantly between now and 2050

| | Households | Jobs |
|----------------|------------|----------|
| Valley | +148,000 | +152,000 |
| Mountains | +40 | +1,100 |
| Victor Valley | +75,000 | +47,000 |
| Morongo Basin | +11,000 | +6,400 |
| North Desert | +7,000 | +5,400 |
| Colorado River | +500 | +300 |



Disadvantaged Communities

The county is home to many communities considered disadvantaged based on demographic and environmental criteria. These communities may have mobility or public health challenges.

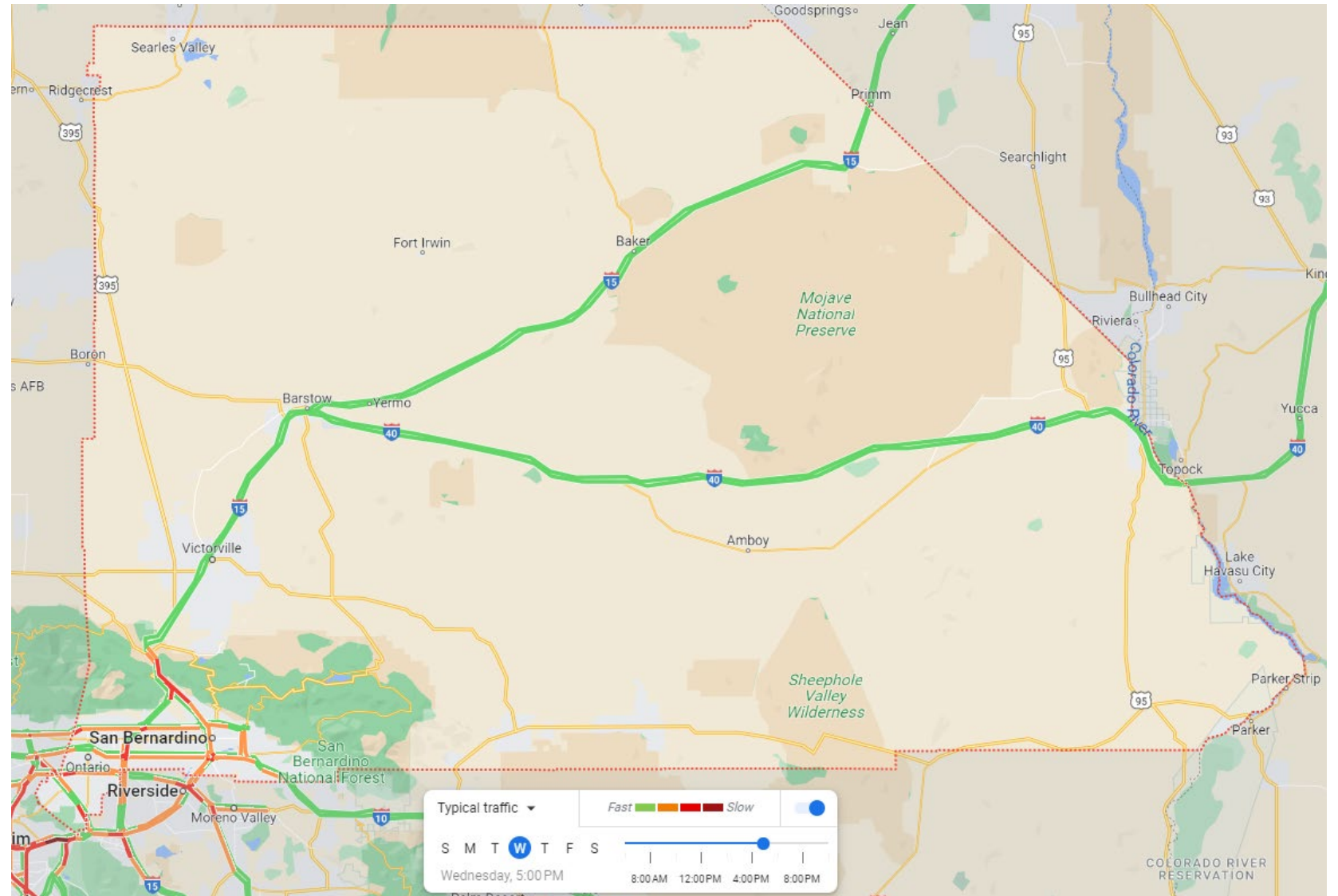


Poll

1. What are the biggest transportation challenges you face in your community?
(select up to three)
 - a. Long travel distances
 - b. Traffic congestion
 - c. Lack of pedestrian and cycling infrastructure
 - d. Safety concerns
 - e. Limited public transit service
 - f. Inadequate connectivity between modes
 - g. Limited access to transportation for underserved communities
 - h. Other

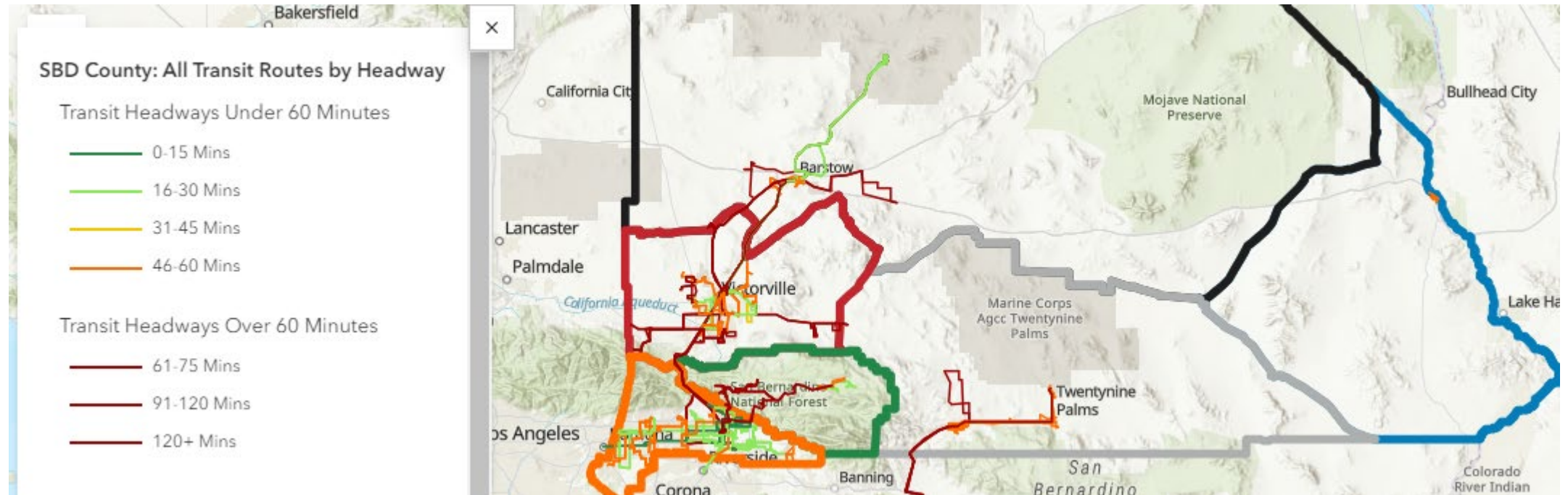
Roadways

- Roads and highways in the Valley subregion and Cajon Pass experience recurring congestion
- I-10 and I-15 Express Lanes in development



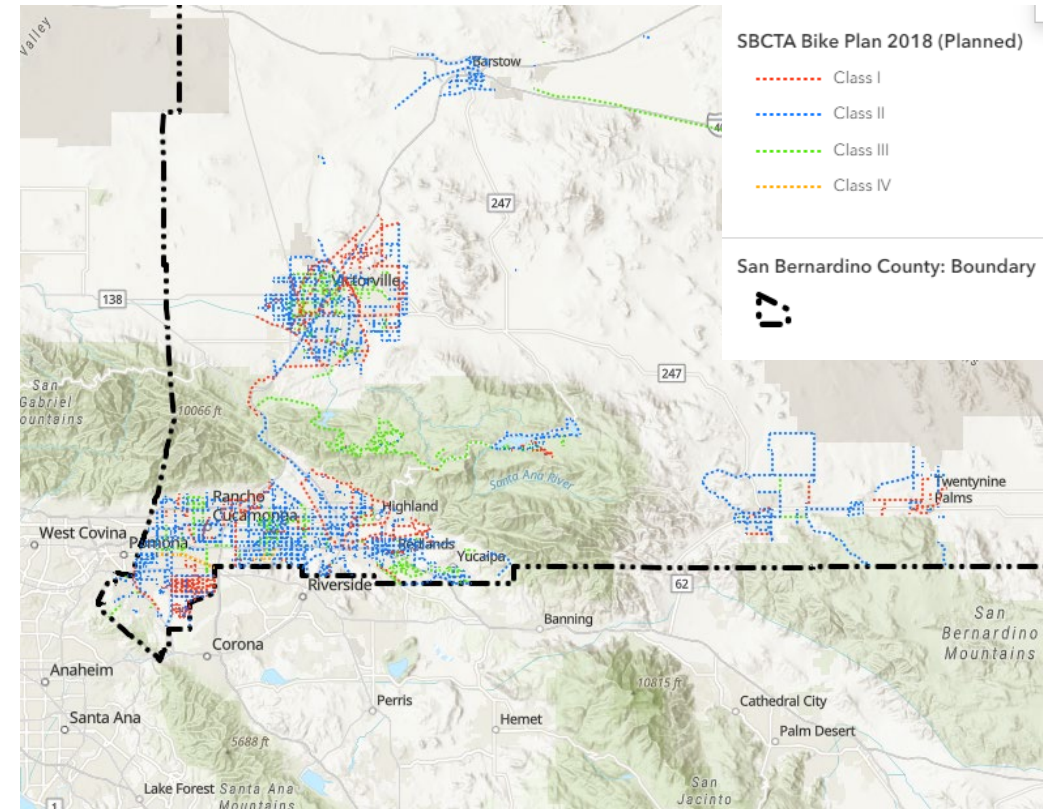
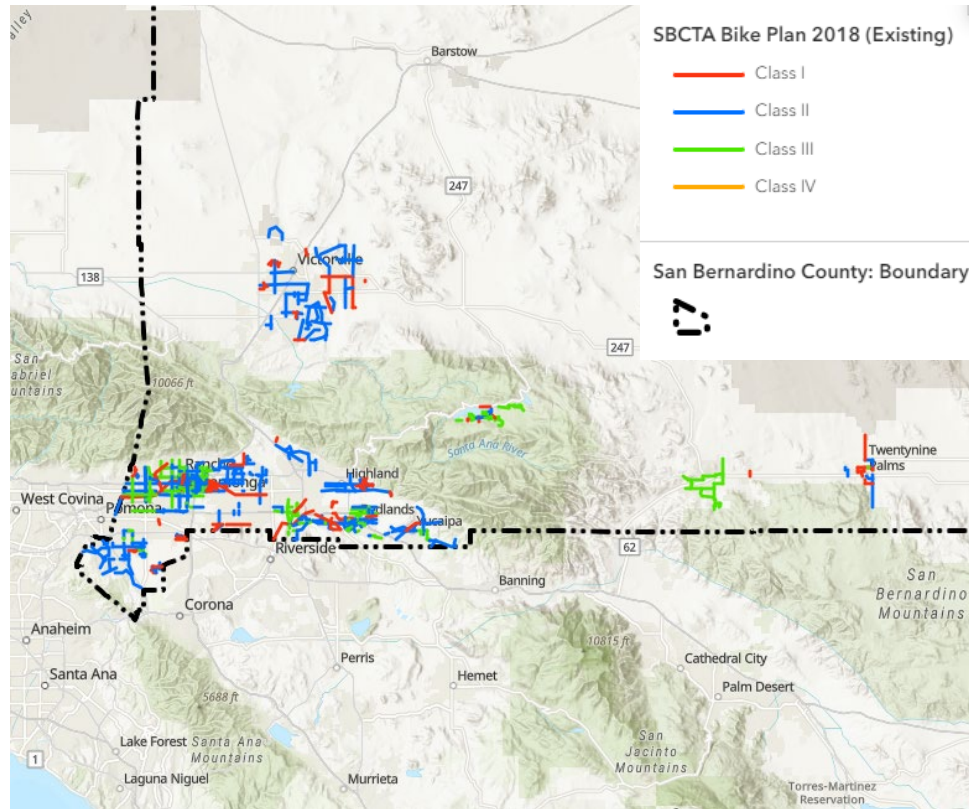
Transit

- Transit ridership dropped drastically as a result of COVID, but ridership is steadily returning
- With such a large county, much of which is rural or suburban, operators face tradeoffs between service coverage and frequency



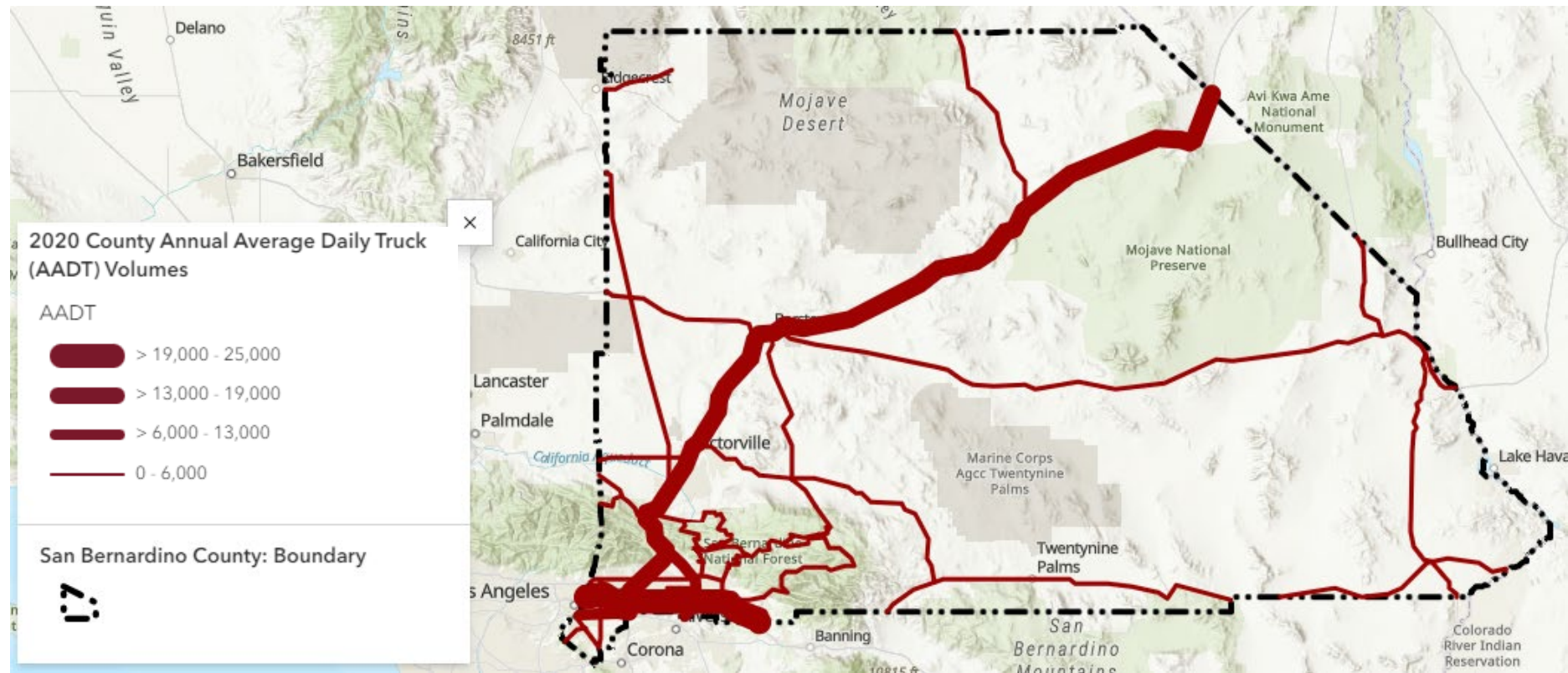
Active Transportation

The county has a growing network of sidewalks and bike lanes and several plans focused on making active transportation safer and more accessible



Freight

Freight movement by truck and rail is a key part of the local economy. Portions of the Valley subregion serve as major warehousing and logistics hubs.



Poll

1. If you could change anything about the transportation system, what would it be? (select up to three)
 - a. Improve public transportation options and frequency
 - b. Expand bike and pedestrian network
 - c. Reduce traffic congestion
 - d. Improve transportation for seniors, students, and people with disabilities
 - e. Concentrate housing and jobs along main corridors
 - f. Improve safety
 - g. Fix and maintain the current system (e.g. fix potholes)
 - h. Other

Transportation Policy and Funding

- Federal programs provided increased funds for transportation
- Funding programs (both state and federal) emphasize:
 - Alternatives to private car travel to help with climate change and air quality
 - Directing improvements towards disadvantaged communities
- California legislation (CAPTI, SB 743) limits highway expansion but supports housing production near transit to accommodate population growth



Key Takeaways and Next Steps

Key Takeaways

- San Bernardino County is large and diverse, creating differing needs by subregion
- The county is growing in population and employment, but state policy makes accommodating demand with highway expansion difficult
- The large, spread-out county presents a challenge for transit operators to balance frequency with service coverage
- Freight and logistics are vital to the economy but increased truck traffic creates challenges on local roads and highways



Poll

- Which trends will have the biggest impact on transportation in San Bernardino County over the next 25 years? (select top two)
 - a. Working from home
 - b. Zero-emission vehicles
 - c. Other transportation technologies, such as self-driving vehicles
 - d. Climate change
 - e. E-commerce
 - f. Other

Next Steps

- Continue collecting community input
- Consider alternate future scenarios
- Develop draft recommendations to share with community members



Stay Involved!

- Project website gosbcta.com/lrntp
 - Take the online survey!
 - Review the Existing Conditions story map
 - Learn about upcoming events
- Community events
 - 10/1 North Fontana Farmers Market
10am-3pm
15556 Summit Ave, Fontana CA, 92236
 - 10/4 Rialto Farmers Market
10am-2pm
290 W Rialto Ave, Rialto, CA 92376



Project Contact Information

gosbcta.com/lrntp

lrntp@gosbcta.com

Scan to take the survey!



Q&A

Thank you!

Stay Involved!

- Project website gosbcta.com/lrntp
 - Take the online survey!
 - Review the Existing Conditions story map
 - Learn about upcoming events
- Community events
 - 10/1 North Fontana Farmers Market
10am-3pm
15556 Summit Ave, Fontana CA, 92236
 - 10/4 Rialto Farmers Market
10am-2pm
290 W Rialto Ave, Rialto, CA 92376



Project Contact Information

gosbcta.com/lrntp

lrntp@gosbcta.com

Scan to take the survey!

