



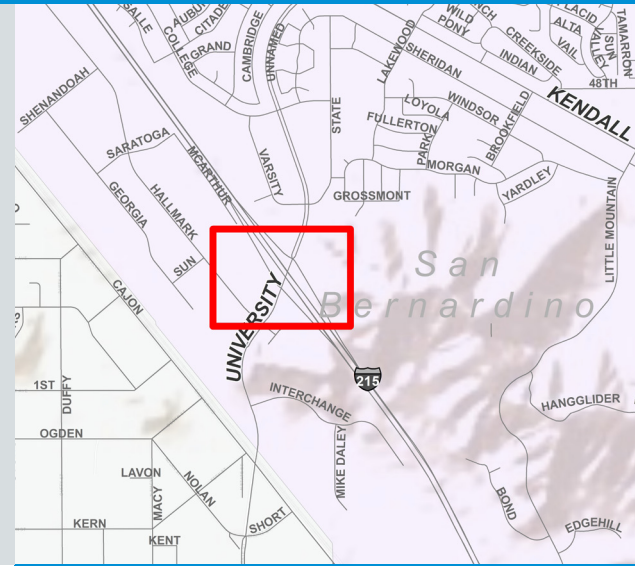
San Bernardino County  
Transportation Authority

# I-215/ UNIVERSITY PARKWAY INTERCHANGE

San Bernardino, CA

## Overview

In an effort to decrease congestion and improve freeway access to I-215 and University Parkway, the San Bernardino County Transportation Authority (SBCTA) and the City of San Bernardino, in cooperation with Caltrans District 8, will construct a Diverging Diamond (DDI) which will provide a safer way to travel while minimizing the cost of new infrastructure.



## Schedule

- JANUARY 2018**  
Completion and Approval of Final Environmental Document (Project Approved)
- MARCH 2024**  
Completion of Final Design and Right of Way Acquisition
- OCTOBER 2024**  
Anticipated Start of Construction
- OCTOBER 2025**  
Anticipated End of Construction

## Funding

FEDERAL	\$5.7 Million
LOCAL	\$14.2 Million
(Includes Measure I)	
CITY	\$3.2 Million
<b>TOTAL</b>	<b>\$23.1 Million</b>



## Stay Connected

877-55-SBCTA  
info@goSBCTA.com  
goSBCTA.com/i215universitypkwy

Feb  
2024



# Frequently Asked Questions

## WHEN WILL CONSTRUCTION BEGIN?

Construction is anticipated to begin in October 2024.

## WHAT CAN I EXPECT DURING CONSTRUCTION?

Construction activities may include pavement work, traffic shifts, and nighttime lane closures to name a few. Please be aware and use caution throughout the corridor as workers and heavy equipment will be present. You should allow for extra time to reach your destination as you may experience delays. A regular construction alert will be available to inform you of how to manage detours and/or closures within the corridor and when and where they will occur. To receive more information and to sign up for the construction alert, visit [goSBCTA.com/PlanBuildMove](http://goSBCTA.com/PlanBuildMove).

## WHAT ARE THE BENEFITS OF A DDI?

Innovative designs such as a DDI promote safety, decrease congestion, and minimize the cost of new infrastructure. DDI advantages include:

**Safety:** A DDI design will reduce the number of potential conflict points by eliminating left turns across opposing traffic. Generally, reducing conflict points reduces accidents.

**Efficiency:** Traffic congestion is reduced by eliminating the left-turn phase from the traffic signal cycle. This increases capacity, without adding lanes, and allows traffic to flow through the interchange more efficiently.

**Cost Savings:** The cost to construct a DDI is normally less than a traditional diamond interchange. A DDI typically needs fewer lanes to accommodate the same number of vehicles.

## WILL YOU CLOSE THE FREEWAY OR INTERCHANGE DURING CONSTRUCTION?

Lane and ramp closures will be implemented as needed during nighttime hours and on weekends for the safety of both construction workers and the public. Advance notifications will be provided through local media and SBCTA's website as well as construction alerts and text messages for those that sign up.

## HOW IS THIS PROJECT BEING FUNDED?

Funding is provided by state and local sources including Measure I funds.

## WHO CAN I CONTACT IF I HAVE A QUESTION OR CONCERN ABOUT CONSTRUCTION?

Our team is available by phone (877-55-SBCTA) or email ([info@goSBCTA.com](mailto:info@goSBCTA.com)) and committed to respond to you within 24 hours.



## We Plan.

The I-215/University Parkway Interchange project was approved in summer 2020. This project will reconfigure the existing interchange at I-215 and University Parkway to address present congestion and heavy traffic movement through the interchange in the City of San Bernardino. The project will be built with federal and local funds including Measure I. Measure I is the 1/2 cent sales tax collected throughout San Bernardino County for transportation improvements. Voters first approved the measure in 1989, and overwhelmingly its extension in 2004 with more than 80% voting to extend the measure through 2040. SBCTA administers Measure I revenue and determines which projects receive Measure I funding.

## We Build.

The project will construct a Diverging Diamond Interchange (DDI) which promotes safety, decreases congestion, and minimizes the cost of new infrastructure. During construction, activities may include digging up roads for utility work, pavement and restriping work, placement of new traffic signals, traffic shifts, intermittent lane closures, and ramp closures. Workers and heavy equipment will be present throughout the project corridor and we ask that you allow for extra time to reach your destination as you may experience delays. Be in the know and sign up to receive the project-specific construction alerts and the project's interactive Google Map with real-time closures and detours at [goSBCTA.com/i215universitypkwy](http://goSBCTA.com/i215universitypkwy).

## You Move.

The I-215/University Parkway Interchange project is designed to reduce delays and improve freeway access. The DDI is a simple design built where interstates meet busy local roadways. As traffic on the local road approaches the interstate, it switches sides at a traffic signal. After traveling past the interstate, traffic switches back at another traffic signal. By moving traffic to the left side of the road, the DDI eliminates the need for left turns across oncoming traffic and reduces the number of traffic lights, allowing more cars to travel through the interchange. Visit our FAQ page for more information on the DDI.

## Stay Connected

877-55-SBCTA  
[info@goSBCTA.com](mailto:info@goSBCTA.com)  
[goSBCTA.com/i215universitypkwy](http://goSBCTA.com/i215universitypkwy)

@goSBCTA

Feb  
2024

# Plan. Build. Move.