

## **Revised Support Material Agenda Item No. 46**

### **Board of Directors Meeting**

**June 4, 2025  
10:00 AM**

#### **LOCATION**

**San Bernardino County Transportation Authority  
First Floor Lobby Board Room  
1170 W. 3<sup>rd</sup> Street, San Bernardino, CA 92410**

### **DISCUSSION ITEMS**

#### **Transit**

##### **46. Brightline West Project Update**

Receive a presentation on the Brightline West passenger rail connection between Las Vegas, Nevada and the Cucamonga Metrolink Station, predominately utilizing the Interstate 15 transportation corridor.

*The PowerPoint presentation was updated after the posting of the agenda.*





## BRIGHTLINE FLORIDA

### Our First Passenger System






- Brightline opened in 2018, with stations in Miami, Fort Lauderdale, and West Palm Beach
- Infill stations opened in Aventura and Boca Raton in December 2022
- Expansion to a flagship station in Orlando was launched in 2023
- Reimagined train travel to be more hospitality focused, driving wide customer satisfaction
- Our presence has re-energized neighborhoods, through transit oriented-development

#### KEY DOWNTOWN LOCATIONS



Miami Central features office, residential and retail

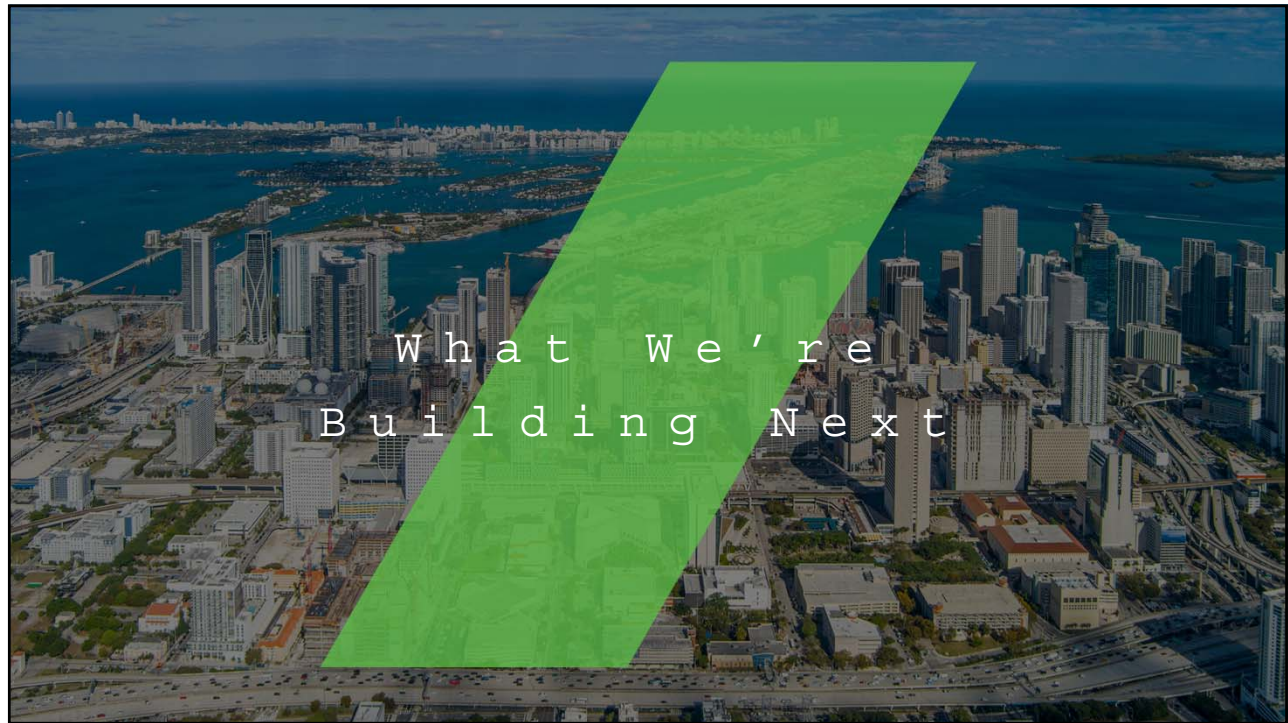
#### CURRENT STATIONS

-  MIAMICENTRAL
-  AVENTURA
-  FORT LAUDERDALE
-  BOCA RATON
-  ORLANDO

#### LEAD CUSTOMER SATISFACTION

	75
	75
	74
	68
	63
	62
	60
	43





## BRIGHTLINE WEST Connecting Las Vegas and Southern California

**All-electric trains**  
in a protected corridor with **zero**  
at-grade crossings

**218-mile trip**  
Las Vegas to Rancho  
Cucamonga

**Up to 186 mph**  
true high-speed rail

**+11 million**  
one-way pass/year



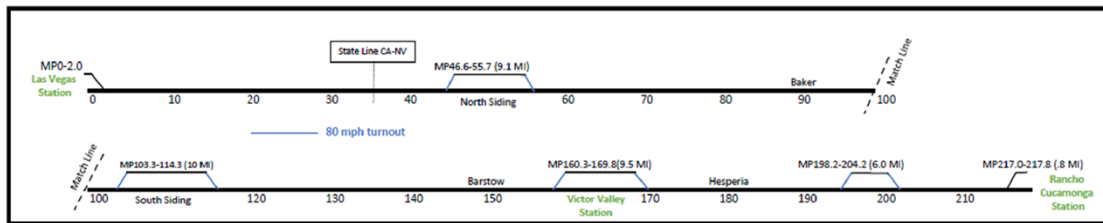
*brightline*  
west

## CONCEPT OF OPERATIONS - OVERVIEW

### PRIMARILY SINGLE-TRACK RAILROAD WITH PASSING SIDINGS

60-minute Headways

Trip Time: ~2 hrs 10 min



Total Single-Track Miles	180.4	83%
Total Double-Track Miles	37.4	17%
<b>Total Miles</b>	<b>217.8</b>	<b>100%</b>

## PROJECT DELIVERY APPROACH :

### Civil Design-Build – 4 contracts

- Split by geography into four contracts
- Highway modifications, rail embankment, barrier interface
- Rail corridor work includes up to sub-ballast

### Track and Systems Design-Build - 1 contract

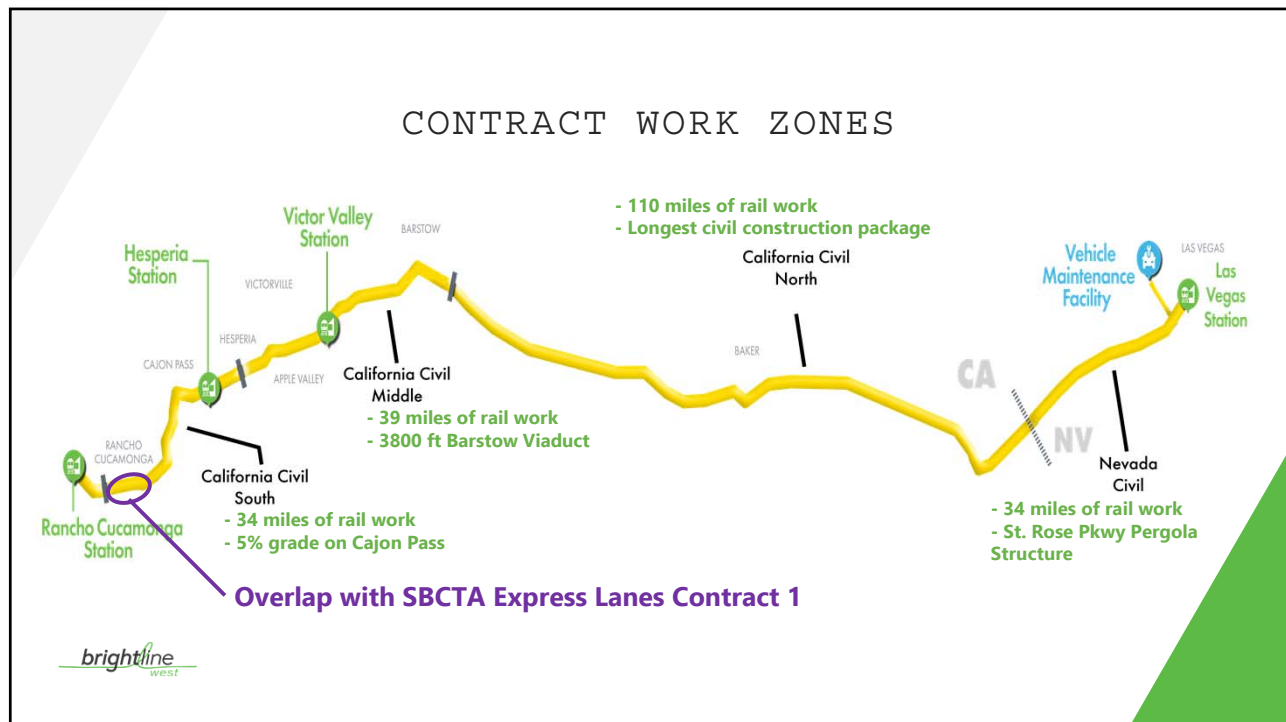
- Systems includes train controls, overhead catenary, comm's
- Track: conventional 136#RE rail, concrete ties, ballast

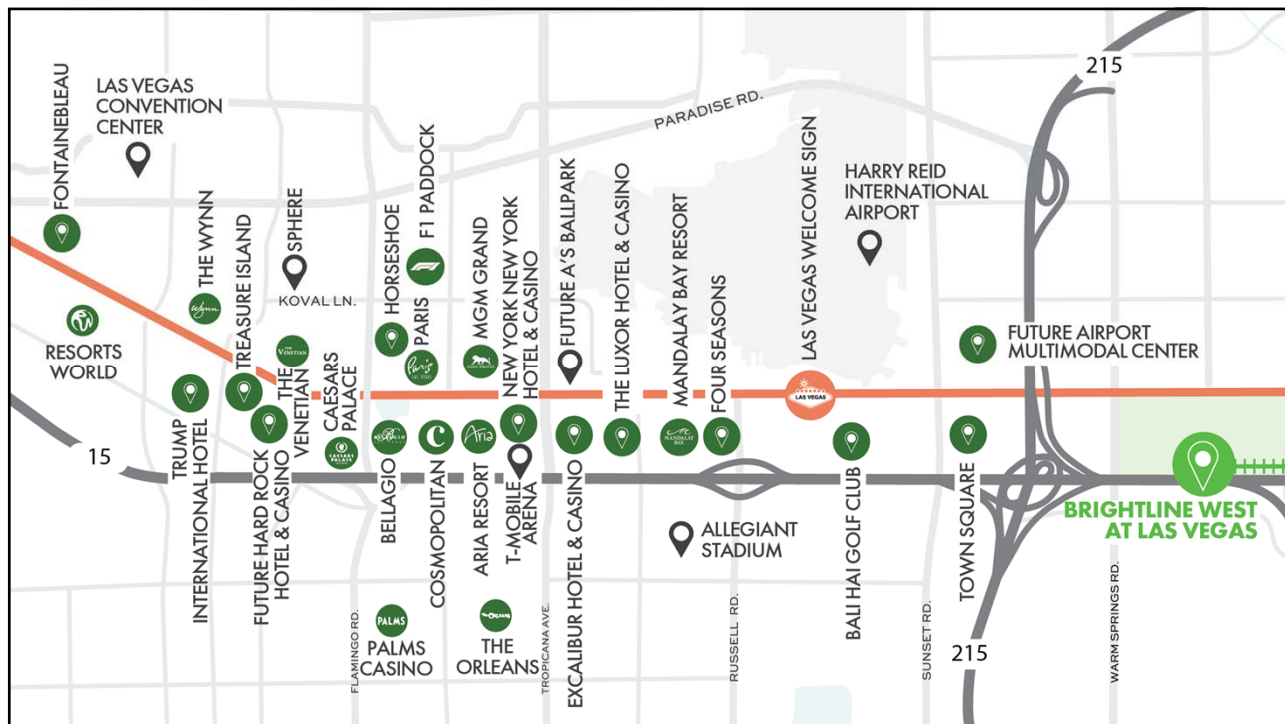
### Stations and Facilities Design-Build – 3 contracts

- Individual contracts for terminal stations in LV and Rancho
- One contract for in-line stations, Vehicle Maintenance Facility and Maintenance of Way buildings









## HIGH DESERT STATIONS

RAISE Grant - SBCTA



### VICTOR VALLEY

- Located Near Dale Evans Parkway
- Platform in median of I-15 access from underpass



### HESPERIA

- Located near Joshua St. at the top of Cajon Pass
- Commuter Focused Service in Morning/Evening
- **Local Rail Service Agreement BLW-SBCTA**

**brightline**  
west

## SOUTHERN CALIFORNIA STATION



- **Partnership SBCTA** and Rancho Cucamonga for land rights
- A Highly Connected, Multi-Modal Hub
  - Coordination with **SBCTA's future connection to Ontario Airport**
  - Highly accessible from Greater L.A. through Metrolink station
  - Seamless pick-ups and drop-offs
  - 3,700+ space on-site parking structure

**METROLINK**

### COORDINATION WITH METROLINK

- **TIMETABLE SCHEDULING**
- **SEAMLESS TRANSFERS**
- **TICKETING**
- **BRANDING**

## SIEMENS AMERICAN PIONEER 220

- Fully electric-powered trains capable of 200+ mph
- Approx. 430 passengers/train
- Trains can be coupled to double capacity
- Initial order of 10 trainsets



**brightline**  
west



## Latest Timeline of Events

May 2024: **Siemens Selected as Rolling Stock Manufacturer**

Sept 2024: **Siemens Announces New York Facility**

Sept 2024: **\$3B FSP Grant Agreement Signed**

March 2025: **\$2.5 B PAB'S issued**

Current: **Finalizing contracts with DB teams**



## CONTACT US

### Media Inquiries

**Ben Porritt**

[ben@gobrightline.com](mailto:ben@gobrightline.com)

**Antonio Castelan**

[acastelan@brightlinewest.com](mailto:acastelan@brightlinewest.com)

### Government Affairs

**Asha Jones**

[ajones@brightlinewest.com](mailto:ajones@brightlinewest.com)



## FOLLOW US



X

@GoBrightline  
Brightline Florida  
@BrightlineWest  
Brightline West



FACEBOOK

@GoBrightline  
Brightline Florida  
@BrightlineWest  
Brightline West



INSTAGRAM

@GoBrightline  
Brightline Florida  
@RideBrightlineWest  
Brightline West



LINKEDIN

Brightline Trains  
Brightline Florida  
Brightline West Trains  
Brightline West

